

**CITY OF PASO ROBLES**  
**MONTHLY TRANSIT REPORT**  
**RIDERSHIP**  
**DECEMBER 2009**

<u>RIDERSHIP SUMMARY:</u>	<u>Paso Robles Dial-A-Ride</u>	<u>Paso Robles Fixed Route</u>	<u>System Totals/Averages</u>
Total Ridership	<u>645</u>	<u>12,771</u>	<u>13,416</u>
Vehicle Revenue Hours	<u>225.2</u>	<u>1097.8</u>	<u>1323.0</u>
Number of Operating Days	<u>26</u>	<u>26</u>	<u>26</u>
Ave. Ridership per Vehicle Revenue Hour	<u>2.9</u>	<u>11.6</u>	<u>15.0</u>
Ave. Ridership per Operating Day	<u>24.8</u>	<u>491.2</u>	<u>516.0</u>
Fiscal Year-To-Date Average Daily Ridership	<u>26.4</u>	<u>606.0</u>	<u>632.4</u>
Prior Fiscal Year-To-Date Average Daily Ridership	<u>34.7</u>	<u>664.2</u>	<u>698.9</u>
Year-To-Date Average Monthly Ridership	<u>677</u>	<u>15,652</u>	<u>16,332</u>
Prior Year-To-Date Average Monthly Ridership	<u>896</u>	<u>17,158</u>	<u>18,054</u>
<u>FOR THIS MONTH:</u>			
Highest Ridership Day	35	733	
Lowest Ridership Day	2	139	
<u>SINCE INCEPTION:</u>			
Highest Ridership Day			
Dial-a-Ride	JULY 11, 2008		83
Fixed Route	OCTOBER 7, 2009		1,145
Highest Ridership Month			
Dial-a-Ride	JULY 2008		1,055
Fixed Route	OCTOBER 2008		19,994
Highest Ridership Month - SYSTEM	OCTOBER 2008		20,923

**PASO ROBLES TRANSIT SERVICES  
TOTAL SYSTEM - MONTHLY RIDERSHIP SUMMARY**

**Month of December 2009**

	Avg Days	FY 2010	FY 2009	FY 2008	FY 2007	FY 2006	FY 2005
July	26	17,146	19,131	15,676	14,054	13,976	13,926
August	27	16,539	17,988	16,146	15,599	15,704	14,565
September	25	17,566	19,358	15,725	15,893	16,056	14,464
October	27	18,465	20,823	18,256	16,310	16,206	14,884
November	24	14,858	15,816	15,609	15,527	15,387	13,895
December	26	13,416	15,080	14,027	14,251	14,145	12,343
January	0	0	15,433	13,733	15,458	15,302	12,627
February	0	0	13,811	16,138	14,696	14,467	12,593
March	0	0	16,904	17,017	16,956	16,761	13,657
April	0	0	16,024	18,597	14,819	14,730	11,363
May	0	0	16,757	18,100	16,817	16,687	13,797
June	0	0	17,740	18,240	16,101	15,831	15,122
<b>Total - YTD</b>	<b>154.5</b>	<b>97,990</b>	<b>204,865</b>	<b>197,264</b>	<b>186,481</b>	<b>185,252</b>	<b>163,236</b>
<b>Average Per Month</b>	<b>6</b>	<b>16,332</b>	<b>34,144</b>	<b>16,439</b>	<b>15,540</b>	<b>15,438</b>	<b>13,603</b>
<b>Average Per Day</b>		<b>634</b>	<b>1,326</b>	<b>652</b>	<b>659</b>	<b>659</b>	<b>580</b>

**PASO ROBLES TRANSIT SERVICES  
SYSTEM TOTALS - MONTHLY PERFORMANCE INDICATORS**

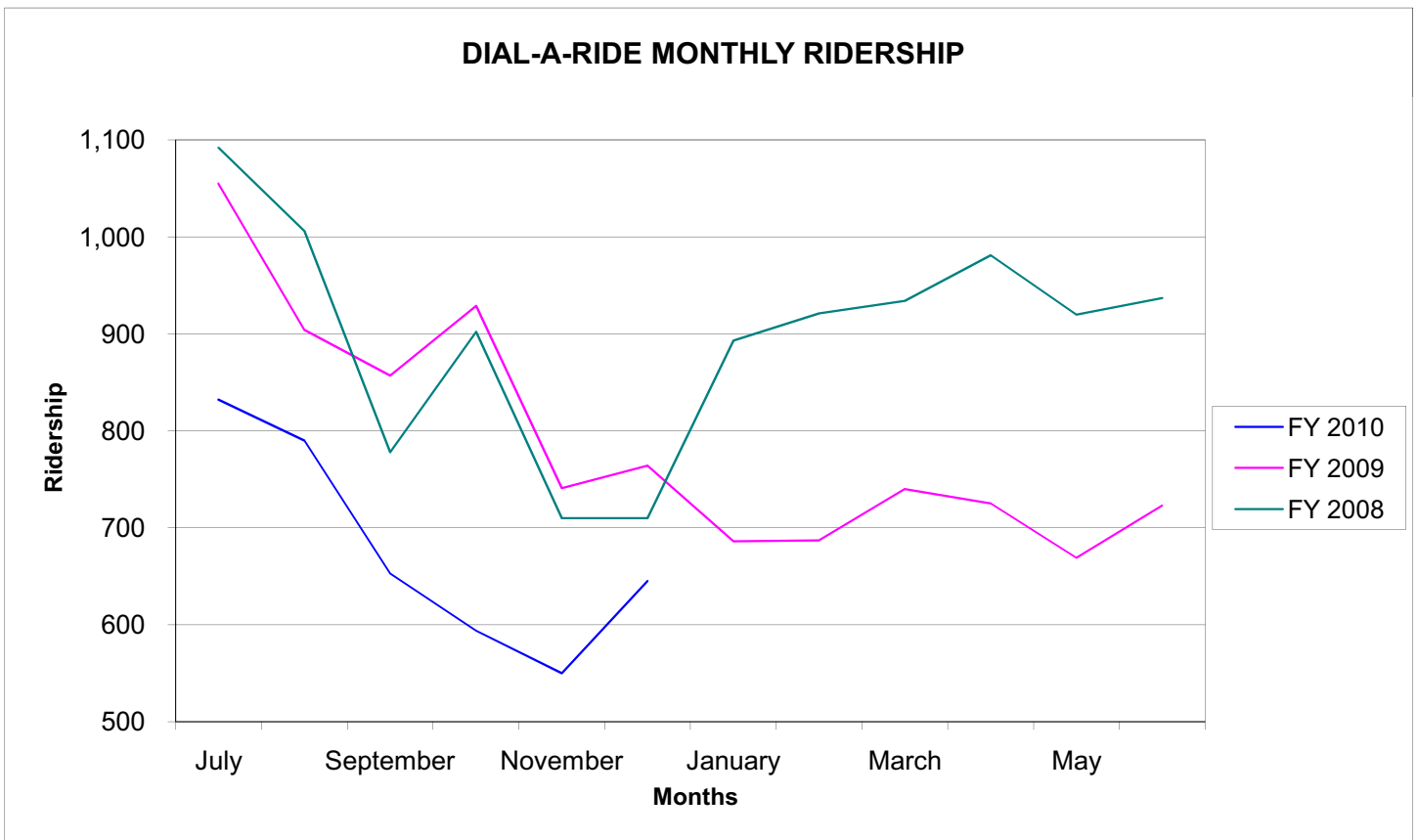
	Current Year To Date	FY 2009	FY 2008	FY 2007	FY 2006	FY 2005
Fare Box Ratio	14.7%	20.9%	22.9%	20.0%	18.6%	18.3%
Operating Cost Per VSH	\$ 58.66	\$ 46.06	\$ 47.72	\$ 52.46	\$ 46.07	\$ 43.38
Operating Cost Per VSM	\$ 4.54	\$ 3.51	\$ 3.48	\$ 3.97	\$ 3.34	\$ 3.19
Operating Cost Per Rider	\$ 4.61	\$ 3.43	\$ 3.61	\$ 4.25	\$ 4.16	\$ 4.14
Riders Per VSH	12.73	13.59	13.22	12.34	11.07	10.47
Riders Per VSM	0.99	1.02	0.96	0.93	0.80	0.77

VSM = vehicle service mile  
VSH = vehicle service hour

**PASO ROBLES TRANSIT SERVICES  
DIAL-A-RIDE - MONTHLY RIDERSHIP SUMMARY**

**Month of December 2009**

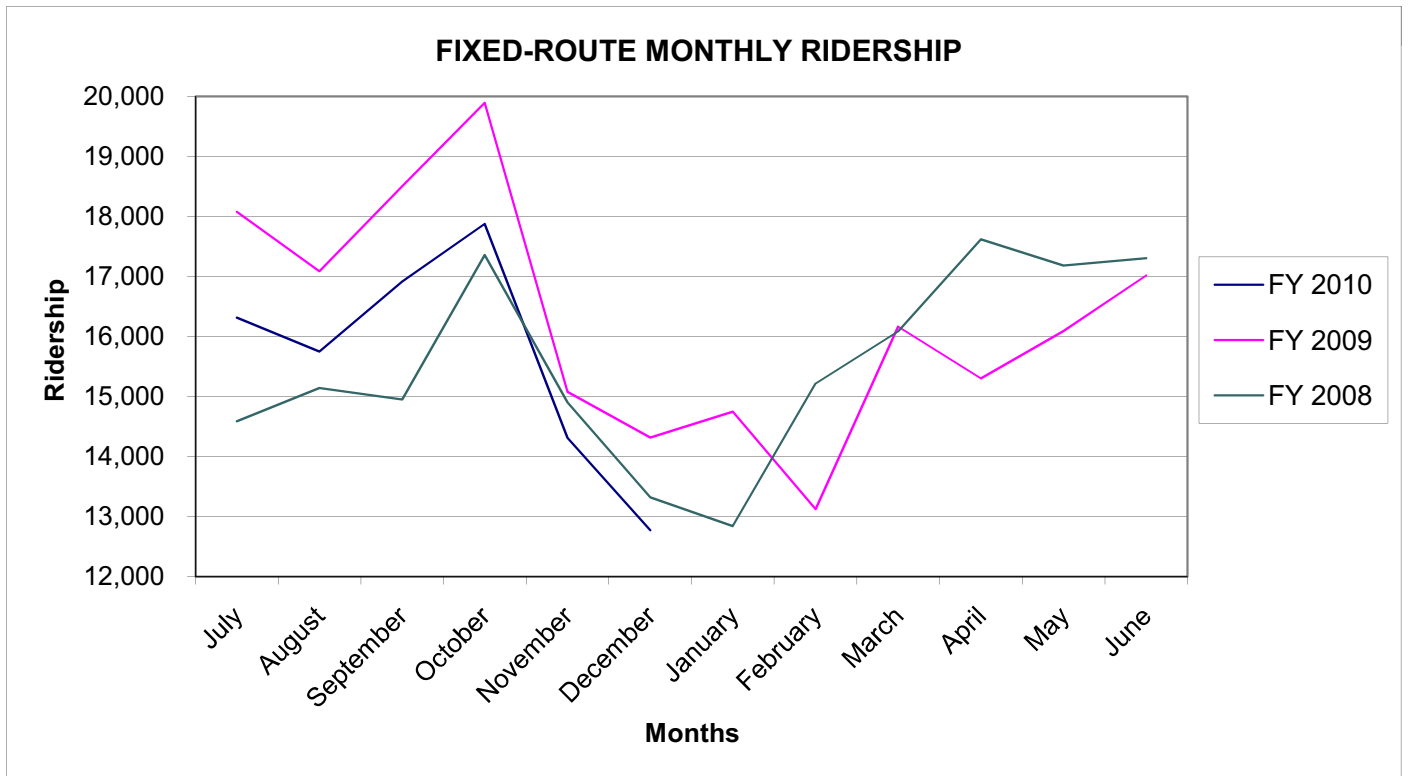
	Days	FY 2010	FY 2009	FY 2008	FY 2007	FY 2006	FY 2005
July	26	832	1,055	1,092	809	731	783
August	27	790	904	1,006	797	902	798
September	25	653	857	778	715	878	762
October	26	594	929	902	873	769	753
November	24	550	741	710	825	685	721
December	26	645	764	710	826	720	705
January			686	893	896	740	791
February			687	921	888	659	776
March			740	934	937	742	839
April			725	981	769	680	790
May			669	920	829	699	832
June			723	937	1,038	768	775
<b>Total - YTD</b>	<b>154</b>	<b>4,064</b>	<b>9,480</b>	<b>10,784</b>	<b>10,202</b>	<b>8,973</b>	<b>9,325</b>
<b>Average Per Month</b>	<b>6</b>	<b>677.3</b>	<b>790</b>	<b>899</b>	<b>850</b>	<b>748</b>	<b>777</b>
<b>Average Per Day</b>		<b>26</b>	<b>31</b>	<b>36</b>	<b>38</b>	<b>35</b>	<b>36</b>



**PASO ROBLES TRANSIT SERVICES  
FIXED ROUTE - MONTHLY RIDERSHIP SUMMARY**

**Month of December 2009**

	Days	FY 2010	FY 2009	FY 2008	FY 2007	FY 2006	FY 2005
July	26	16,314	18,076	14,584	13,245	13,143	11,321
August	27	15,749	17,084	15,140	14,802	13,767	10,606
September	25	16,913	18,501	14,947	15,178	13,702	18,648
October	27	17,871	19,894	17,354	15,437	14,131	11,364
November	24	14,308	15,075	14,899	14,702	13,174	10,413
December	26	12,771	14,316	13,317	13,425	11,638	10,445
January			14,747	12,840	14,562	11,836	10,317
February			13,124	15,217	13,808	11,817	10,593
March			16,164	16,083	16,019	12,818	12,261
April			15,299	17,616	14,050	10,573	12,409
May			16,088	17,180	15,988	12,965	12,298
June			17,017	17,303	15,063	14,347	13,139
<b>Total - YTD</b>	<b>155</b>	<b>93,926</b>	<b>195,385</b>	<b>186,480</b>	<b>176,279</b>	<b>153,911</b>	<b>143,814</b>
<b>Average Per Month</b>	<b>6</b>	<b>15,654</b>	<b>32,564</b>	<b>15,540</b>	<b>14,690</b>	<b>12,826</b>	<b>11,985</b>
<b>Average Per Day</b>		<b>606</b>	<b>636</b>	<b>576</b>	<b>570</b>	<b>503</b>	<b>468</b>



**PASO ROBLES TRANSIT SERVICES  
SYSTEM TOTALS - MONTHLY PERFORMANCE INDICATORS**

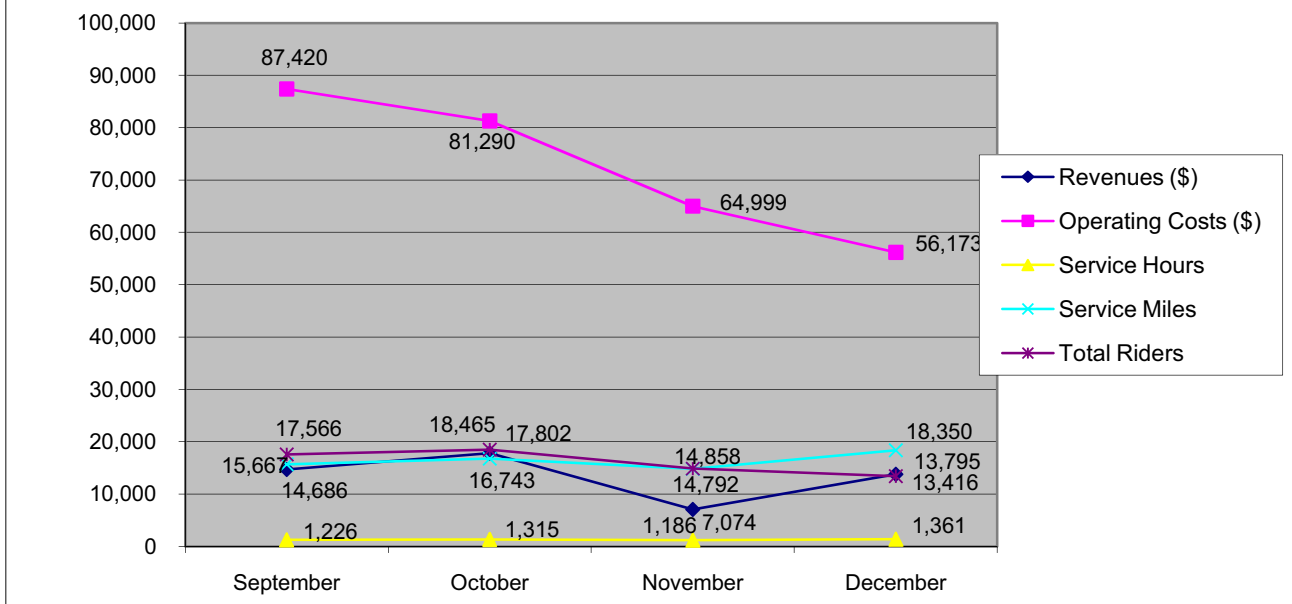
**Month of      December      2009**

	<u>Revenues</u>	<u>Operating Cost*</u>	<u>Vehicle Service Hours-VSH</u>	<u>Vehicle Service Miles-VSM</u>	<u>Total Riders</u>
July	6,537	69,694	1,321	17,214	17,146
August	6,410	91,790	1,286	16,587	16,539
September	14,686	87,420	1,226	15,667	17,566
October	17,802	81,290	1,315	16,743	18,465
November	7,074	64,999	1,186	14,792	14,858
December	13,795	56,173	1,361	18,350	13,416
January	0	0	0	0	0
February	0	0	0	0	0
March	0	0	0	0	0
April	0	0	0	0	0
May	0	0	0	0	0
June	0	0	0	0	0
					6
Total - YTD	66,304	451,367	7,695	99,353	97,990
Average Per Month	11,051	75,228	1,282	16,559	16,332

	<u>Fare Box Ratio</u>	<u>Operating Cost Per VSH</u>	<u>Operating Cost Per VSM</u>	<u>Operating Cost Per Rider</u>	<u>Riders Per VSH</u>	<u>Riders Per VSM</u>
July	9.4%	\$ 52.77	\$ 4.05	\$ 4.06	12.98	1.00
August	7.0%	\$ 71.35	\$ 5.53	\$ 5.55	12.86	1.00
September	16.8%	\$ 71.31	\$ 5.58	\$ 4.98	14.33	1.12
October	21.9%	\$ 61.84	\$ 4.86	\$ 4.40	14.05	1.10
November	10.9%	\$ 54.81	\$ 4.39	\$ 4.37	12.53	1.00
December	24.6%	\$ 41.27	\$ 3.06	\$ 4.19	9.86	0.73
January						
February						
March						
April						
May						
June						
Total - YTD	14.7%	\$ 58.66	\$ 4.54	\$ 4.61	12.73	0.99

Note: All financial figures for the first half of the fiscal year are subject to change with the closing of the books from the 08-09 fiscal year, which is still in progress.

**Transit Performance Statistical Trends for Previous Four Months**



\$ - \$ - \$ - \$ - \$ - \$ -  
 \$ - \$ - \$ - \$ - \$ - \$ -

**PASO ROBLES TRANSIT SERVICES  
FIXED ROUTE - MONTHLY PERFORMANCE INDICATORS**

**December 2009**

	<u>Revenues</u>	<u>Operating Cost</u>	<u>Vehicle Service Hours-VSH</u>	<u>Vehicle Service Miles-VSM</u>	<u>Total Riders</u>
July	5,832	55,633	964	13,540	16,314
August	5,366	62,632	953	13,159	15,749
September	13,197	62,825	921	12,736	16,913
October	16,634	64,999	991	13,715	17,871
November	5,961	53,385	904	12,154	14,308
December	12,697	45,144	1,136	15,365	12,771
January					
February					
March					
April					
May					
June					
<hr/>					
Total - YTD	59,687	344,618	5,869	80,669	93,926
Average Per Month	6	9,948	189	489	7,827

	<u>Fare Box Ratio</u>	<u>Operating Cost Per VSH</u>	<u>Operating Cost Per VSM</u>	<u>Operating Cost Per Rider</u>	<u>Riders Per VSH</u>	<u>Riders Per VSM</u>
July	10.5%	\$ 57.69	\$ 4.11	\$ 3.41	16.92	1.20
August	8.6%	\$ 65.72	\$ 4.76	\$ 3.98	16.53	1.20
September	21.0%	\$ 68.21	\$ 4.93	\$ 3.71	18.36	1.33
October	25.6%	\$ 65.58	\$ 4.74	\$ 3.64	18.03	1.30
November	11.2%	\$ 59.06	\$ 4.39	\$ 3.73	15.83	1.18
December	28.1%	\$ 39.74	\$ 2.94	\$ 3.53	11.24	0.83
January						
February						
March						
April						
May						
June						
<hr/>						
Total - YTD	17.3%	\$ 58.72	\$ 4.27	\$ 3.67	16.00	1.16

**PASO ROBLES TRANSIT SERVICES  
DIAL-A-RIDE - MONTHLY PERFORMANCE INDICATORS**

**December 2009**

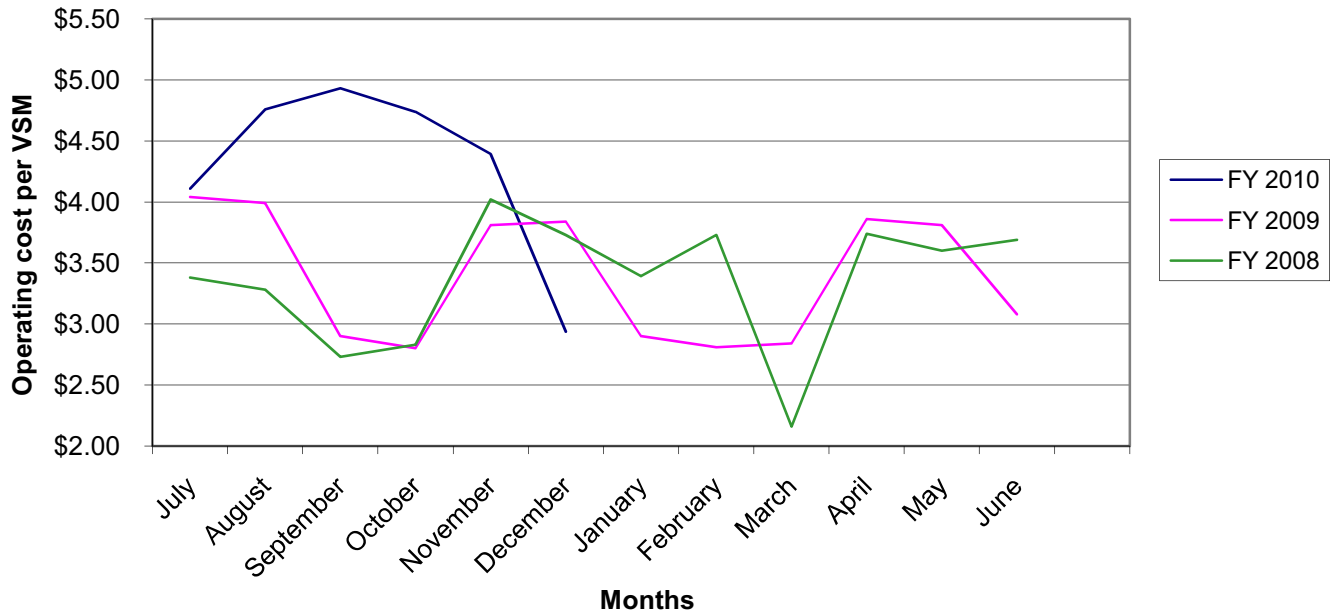
	<u>Revenues</u>	<u>Operating Cost</u>	<u>Vehicle Service Hours-VSH</u>	<u>Vehicle Service Miles-VSM</u>	<u>Total Riders</u>
July	706	14,061	356	3,674	832
August	1,044	29,159	334	3,428	790
September	1,489	24,595	305	2,931	653
October	1,168	16,290	323	3,028	594
November	1,114	11,615	282	2,638	550
December	1,097	11,029	225	2,985	645
January					
February					
March					
April					
May					
June					
<hr/>					
Total - YTD	6,618	106,749	1,826	18,684	4,064
Average Per Month	6	1,103	17,792	304	677

	<u>Fare Box Ratio</u>	<u>Operating Cost Per VSH</u>	<u>Operating Cost Per VSM</u>	<u>Operating Cost Per Rider</u>	<u>Riders Per VSH</u>	<u>Riders Per VSM</u>
July	5.0%	\$ 39.45	\$ 3.83	\$ 16.90	2.33	0.23
August	3.6%	\$ 87.43	\$ 8.51	\$ 36.91	2.37	0.23
September	6.1%	\$ 80.66	\$ 8.39	\$ 37.67	2.14	0.22
October	7.2%	\$ 50.37	\$ 5.38	\$ 27.42	1.84	0.20
November	9.6%	\$ 41.17	\$ 4.40	\$ 21.12	1.95	0.21
December	10.0%	\$ 48.98	\$ 3.69	\$ 17.10	2.86	0.22
January						
February						
March						
April						
May						
June						
<hr/>						
Total - YTD	6.2%	\$ 58.47	\$ 5.71	\$ 26.27	2.23	0.22

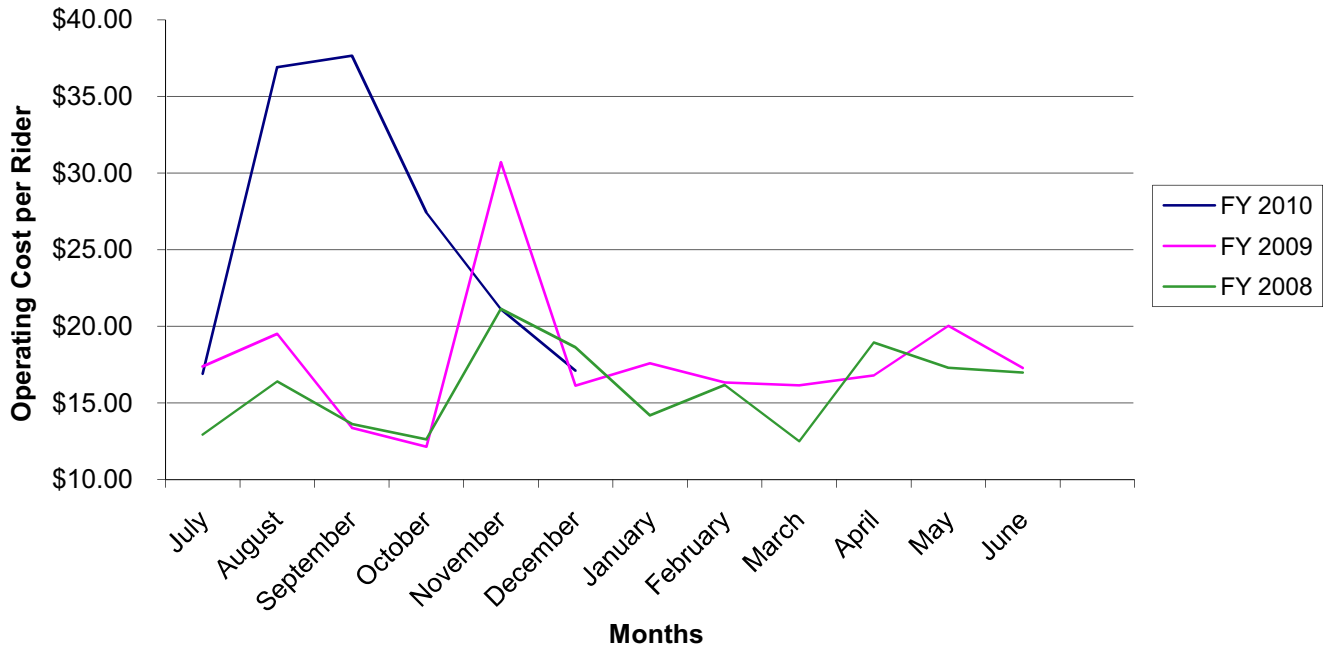
### DIAL-A-RIDE MONTHLY OPERATING COST PER VEHICLE SERVICE MILE (VSM)



### FIXED ROUTE MONTHLY OPERATING COST PER VEHICLE SERVICE MILE (VSM)



### DIAL-A-RIDE MONTHLY COST PER RIDER



### FIXED ROUTE MONTHLY COST PER RIDER

