

RESOLUTION NO. 13-140

A RESOLUTION OF THE CITY COUNCIL OF THE CITY OF PASO ROBLES
APPROVING GENERAL PLAN AMENDMENT 2013-001 AMENDING THE
LAND USE MAP (FIGURE LU-6) AND SPHERE OF INFLUENCE MAP (FIGURE LU-1)
(CITY-INITIATED)

WHEREAS, the City has initiated General Plan Amendment 2013-001 to:

- A. Amend Figure LU-6 to clarify land use designations for 60 lots in the historic downtown (between Vine Street and the UP Railroad and between 10th and 21st Streets, to more-accurately reflect the applicable zoning.
- B. Amend Figure LU-6 to remove the Chandler Ranch Specific Plan Overlay Land Use Designation from two adjacent properties (15 and 17 acres) located north side of Union Road at the eastern boundary of the City;
- C. Amend Figure LU-6 to pre-designate a 1.4 acre parcel, located on the western City boundary, south of Pacific Avenue for Residential Single Family, 4 units per acre (RSF-4) land use. Prezone 13-001 will establish R-1 zoning on the 1.4 acre parcel to match the existing zoning of adjacent parcels within City limits;
- D. Amend Figure LU-1 to show the Sphere of Influence Boundaries as updated by LAFCO on February 21, 2013; and

WHEREAS, pursuant to the California Environmental Quality Act (CEQA), a Negative Declaration was prepared to describe the effects of the general plan amendment; and

WHEREAS, at its meeting of August 27, 2013, the Planning Commission conducted a public hearing on the Project and took the following actions:

- a. Considered the facts and analysis, as presented in the staff report prepared for the Project;
- b. Conducted a public hearing to obtain public testimony on the parts of the Project;
- c. Considered public testimony from all parties;
- d. Recommended that the City Council approve a Negative Declaration for the Project;
- e. Recommended that the City Council approve the general plan amendment for Components “B”, “C”, and “D”, as described above;
- f. Because of the absence of one Commissioner and conflicts of interest three Commissioners had with Component “A”, failed to achieve a majority recommendation for Component “A” as required by Government Code Section 65354; and

WHEREAS, at its meetings of September 17 and October 1, 2013, the City Council conducted a public hearing on the Project and took the following actions:

- a. Considered the facts and analysis, as presented in the staff report prepared for this amendment, including the recommendation of the Planning Commission;
- b. Conducted a public hearing to obtain public testimony on this amendment;
- c. Based on its independent judgment, approved a Negative Declaration for the Project in accordance with the California Environmental Quality Act;
- d. Remanded Component “A” back to the Planning Commission so that it might formulate a recommendation of the majority of the Commission’ membership, as required by Government Code Section 65354;

NOW, THEREFORE, BE IT RESOLVED, by the City Council of the City of El Paso de Robles, California, does hereby amend the Land Use Element of the General Plan as shown in Exhibits B through D. (Component A will be remanded to the Planning Commission for a recommendation by a majority of its membership prior to being reconsidered by the City Council as a separate General Plan Amendment.

PASSED AND ADOPTED by the City Council of the City of Paso Robles this 1st day of October, 2013 by the following vote:

AYES: Steinbeck, Strong, Martin, Hamon, Picanco
NOES:
ABSENT:
ABSTAIN:

ATTEST:


Caryn Jackson, Deputy City Clerk


Duane Picanco, Mayor

EXHIBIT B
Resolution 13-140
General Plan Amendment 2013-001B
Changes to Land Use Map (Figure LU-6)
Remove Two Parcels from Chandler Ranch Specific Plan Overlay

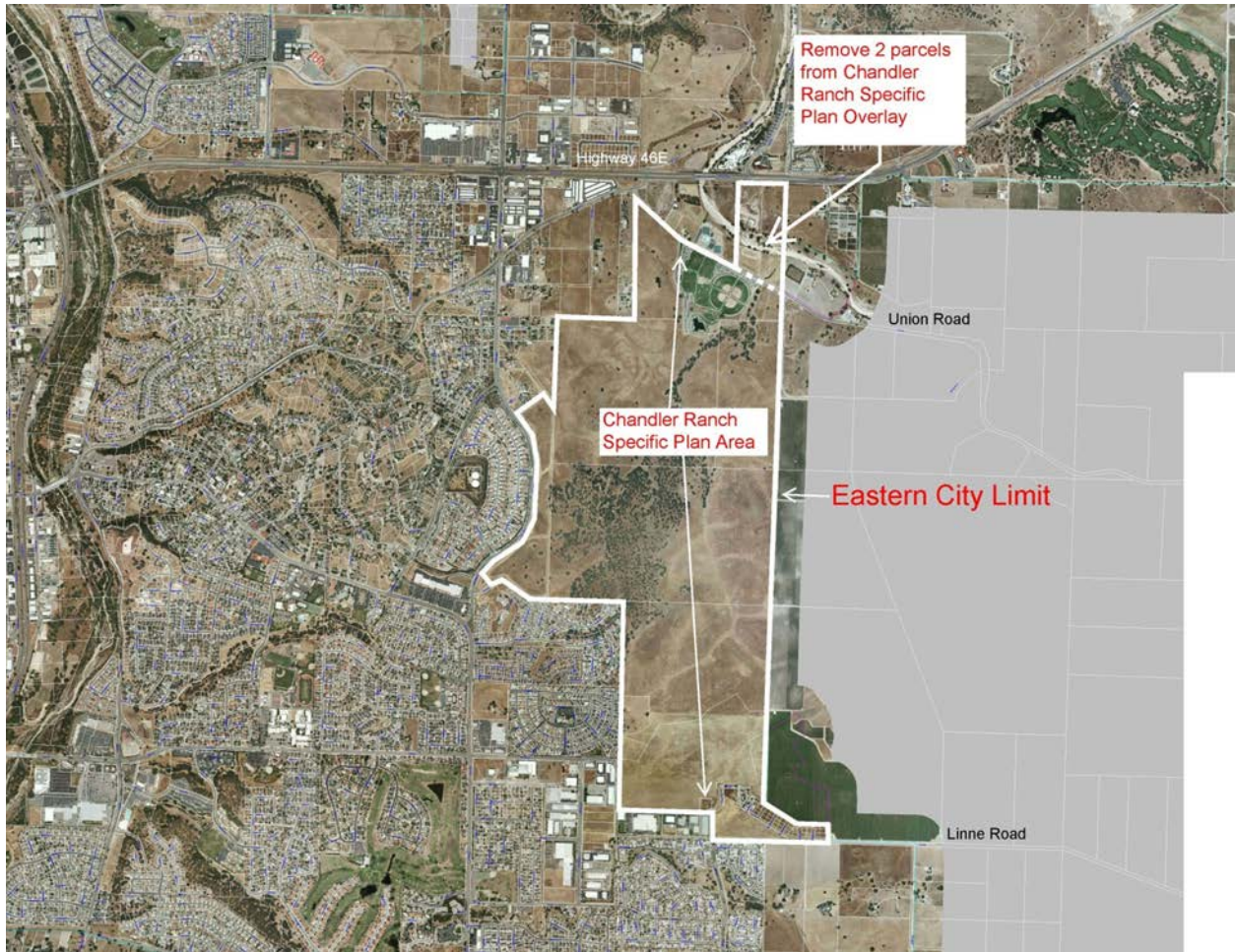


EXHIBIT C
Resolution 13-140
General Plan Amendment 2013-001C
Changes to Land Use Map (Figure LU-6)
Predesignate 1.4 Acre Parcel (Ernst Annexation)



EXHIBIT D
Resolution 13-140
General Plan Amendment 2013-001D
Update Sphere of Influence Map (Figure LU-1)

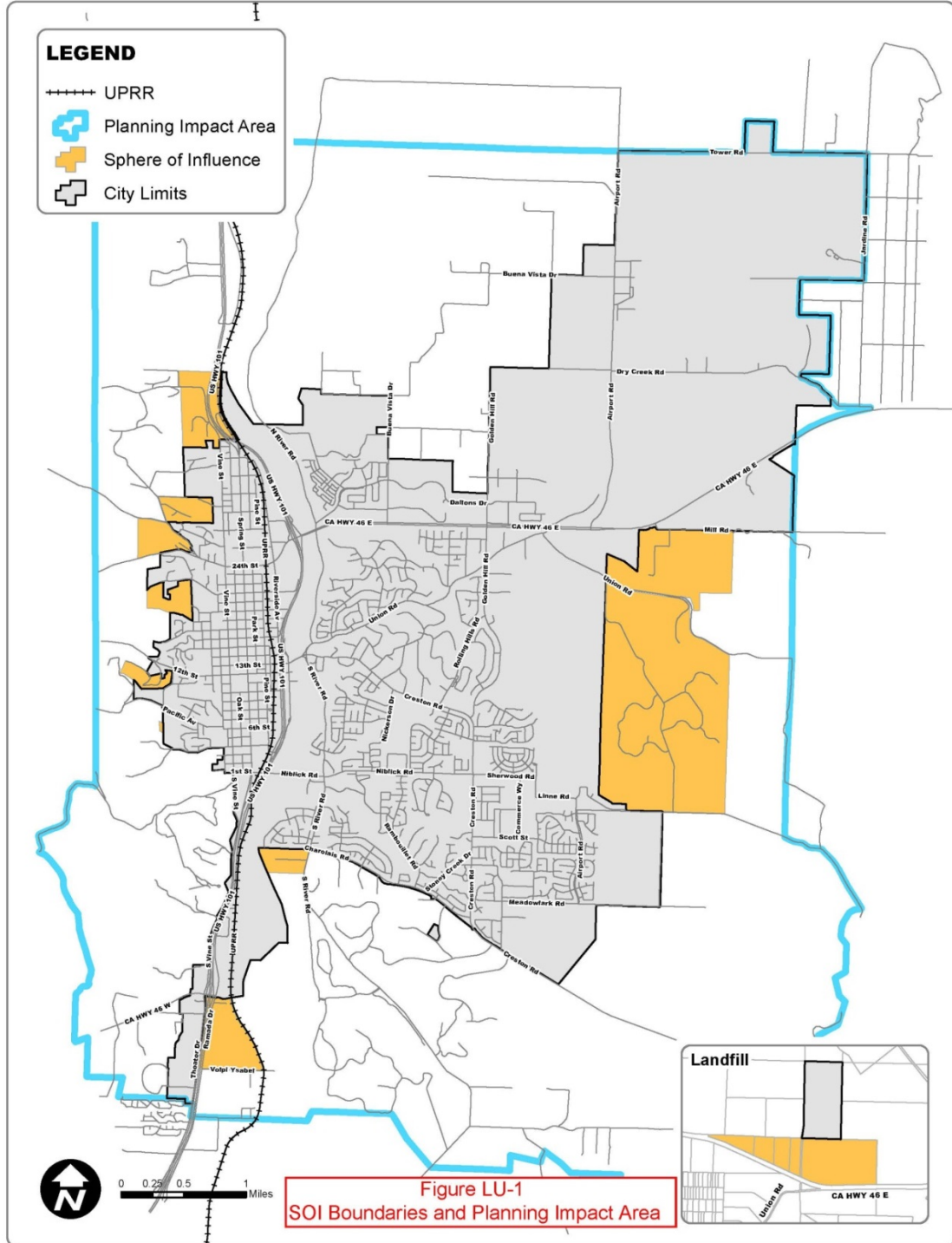


Figure LU-1
SOI Boundaries and Planning Impact Area