

RESOLUTION NO. 90-205

A RESOLUTION OF THE CITY COUNCIL OF THE CITY OF  
EL PASO DE ROBLES, CALIFORNIA, INITIATING PROCEEDINGS  
AND DECLARING THE INTENTION TO ANNEX TRACT NO. 1630  
TO THE PASO ROBLES LANDSCAPE AND LIGHTING DISTRICT NO. 1  
(STREETS AND HIGHWAYS CODES SECTIONS 2250 ET SEQ.)

WHEREAS, the City Council has previously conditioned the development of a project known as Tract 1630 on the participation in a Benefit Maintenance District to fund maintenance of landscape and lighting improvements for the Tract; and

WHEREAS, the owners of the real property within the proposed District have consented in writing to the inclusion of the Tract in a District pursuant to the Landscape and Lighting Act of 1972 (Streets and Highways Code Sections 22500 et seq.); and

WHEREAS, there currently exists in the City the Paso Robles Landscape and Lighting District #1 ("District") to which this Tract can be annexed.

NOW, THEREFORE, the City Council of the City of El Paso de Robles, California, does resolve as follows:

1. The City Council of the City of El Paso de Robles hereby declares its intent to annex Tract 1630 to the District.

2. The improvements within the Tract to be subject to assessment for maintenance by such District shall include those enumerated in Streets and Highways Code Section 22525 which are installed by the developer as a condition of approval of Tract 1630 or which are hereafter installed by developer or City.

3. The property to be annexed to the District is located in the City of El Paso de Robles, County of San Luis Obispo, as more particularly described in Exhibit "A" hereto which is hereby

incorporated herein. A map showing the boundaries of the property to be annexed is attached as Exhibit "B" which is hereby incorporated herein.

4. Pursuant to Streets and Highways Code Sections 22608.1 and 22608.2, no notice, hearing or filing of an engineer's report shall be required to form this District.

5. The part of the District annexed shall be call the "Paso Robles Landscape and Lighting District No. 1, Subarea 8".

6. The annexation of Subarea 8 to the District shall be placed upon the next agenda of a regularly scheduled meeting of the City Council.

On motion of Council Member Martin, seconded by Council member Picanco, and on the following roll call vote, to wit:

**AYES:** Martin, Picanco, Reneau and Iversen

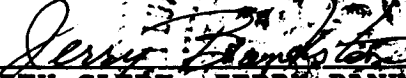
**NOES:** None

**ABSENT:** Russell

the foregoing Resolution No. 90-205 was adopted on the 20th day of November, 1990.

City of Paso Robles  
  
**MAYOR CHRISTIAN E. IVERSEN**

ATTEST:

  
**CITY CLERK, JERRY BANKSTON**



1630RES1.TA1

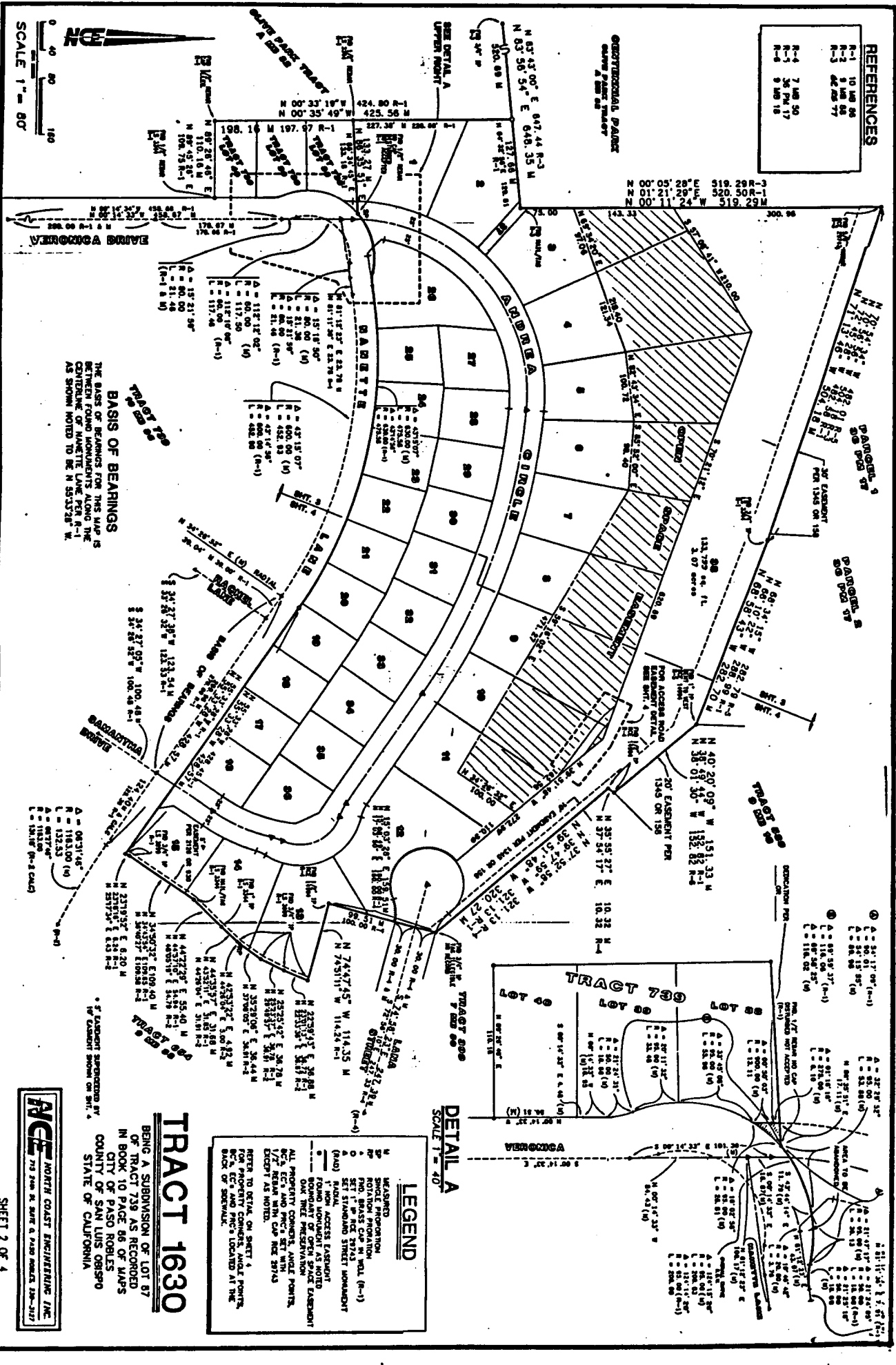
**EXHIBIT "A"**

All of Tract No. 1508, Phase 2, in the City of El Paso de Robles, County of San Luis Obispo, State of California, as recorded in Book 15, Page 84 of Maps on file in the Office of the County Recorder of said County.

**END DESCRIPTION**

**REFERENCES**

- R-1 10 MAR 86
- R-2 26 MAR 87
- R-3 26 MAR 87
- R-4 7 MAR 90
- R-5 26 MAR 87
- R-6 9 MAR 88



**BASIS OF BEARINGS**  
 THE BASIS OF BEARINGS FOR THIS MAP IS  
 RETRIEVED FROM MONUMENTS ALONG THE  
 CENTERLINE OF NAVETTE LINE PER R-1  
 AS SHOWN NOTED TO BE N 55.738° W.

**DETAIL A**  
 SCALE 1" = 40'

**LEGEND**

- M MEASURED
- SP SPOKE PROPORTION
- DP DOWEL POINT
- CP CORNER POINT
- ST SETTING
- STANDARD STREET MONUMENT
- MONUMENT AS NOTED
- BOUNDARY OF OPEN SPACE EASEMENT
- ALL PROPERTY CORNERS, MONUMENT POINTS, SETTING, AND STANDARD STREET MONUMENT EXCEPT AS NOTED.
- SEE TO DETAIL ON SHEET 1 FOR PROPERTY CORNERS, MONUMENT POINTS, SETTING, AND STANDARD STREET MONUMENT EXCEPT AS NOTED.

**TRACT 1630**

BENIC A SUBDIVISION OF LOT 87  
 OF TRACT 738 AS RECORDED  
 IN BOOK 10 PAGE 86 OF MAPS  
 CITY OF PASO ROBLES  
 COUNTY OF SAN LUIS OBISPO  
 STATE OF CALIFORNIA

**ACE** NORTH COAST ENGINEERING, INC.  
 710 2ND ST. SUITE 2 PASO ROBLES, CALIF. 93226

EXHIBIT "B"

3626 PART 555