

RESOLUTION NO. 90-149

**A RESOLUTION OF THE CITY COUNCIL  
OF THE CITY OF PASO ROBLES  
ACCEPTING PUBLIC IMPROVEMENTS FOR MAINTENANCE  
IN TRACT 1632, RIDER DEVELOPMENT,  
IN THE CITY OF EL PASO DE ROBLES**

---

WHEREAS, the public improvements for Tract 1632, have been completed in accordance with approved plans and specifications; and

WHEREAS, the Engineering Department has completed inspection of said improvements and find them in compliance; and

WHEREAS, said improvements will be guaranteed by the Developer for one-year by retention of a 10% guarantee bond for said improvements.

WHEREAS, the sanitary sewer facilities were installed by the City which benefit this tract and this tract should pay fairshare cost to the City in accordance with the City Municipal Code.

**NOW, THEREFORE, BE IT RESOLVED AS FOLLOWS:**

Section 1. That the City Council of the City of Paso Robles accepts Tract 1632, for maintenance.


Section 2. That the Subdivider enter into an agreement with the City to guarantee payment to the City for fairshare of the sanitary sewer facilities installed by the City.

**PASSED AND ADOPTED** by the City Council of the City of Paso Robles, this 4th day of Sept., 1990, on the following vote:

AYES:	Russell, Reneau, Picanco and Iversen
NOES:	None
ABSENT:	Martin

  
\_\_\_\_\_  
Christian E. Iversen, Mayor

ATTEST:

  
\_\_\_\_\_  
Jerry Bankston, City Clerk

PCL B  
(Per R<sub>1</sub>)

1980.00' R<sub>4</sub>  
1989.71' R<sub>2</sub>  
1989.28' R<sub>2</sub>  
1984.23' M

N 0° 30' 00" W  
N 0° 16' 45" W  
N 0° 30' 00" W  
N 0° 00' 25" E

See Detail 'B' Fd. 1/2" rebar - L.S. 3976 per R<sub>1</sub> (accepted)

N 89° 32' 22" W 663.03' R<sub>1</sub>  
N 89° 01' 59" W 662.24' M

N 0° 25' 30" W 657.00' R<sub>1</sub>  
N 0° 06' 17" E 657.34' M  
632.34'

N 54° 31' 48" E 45.45'  
N 80° 06' 31" E 173.01'

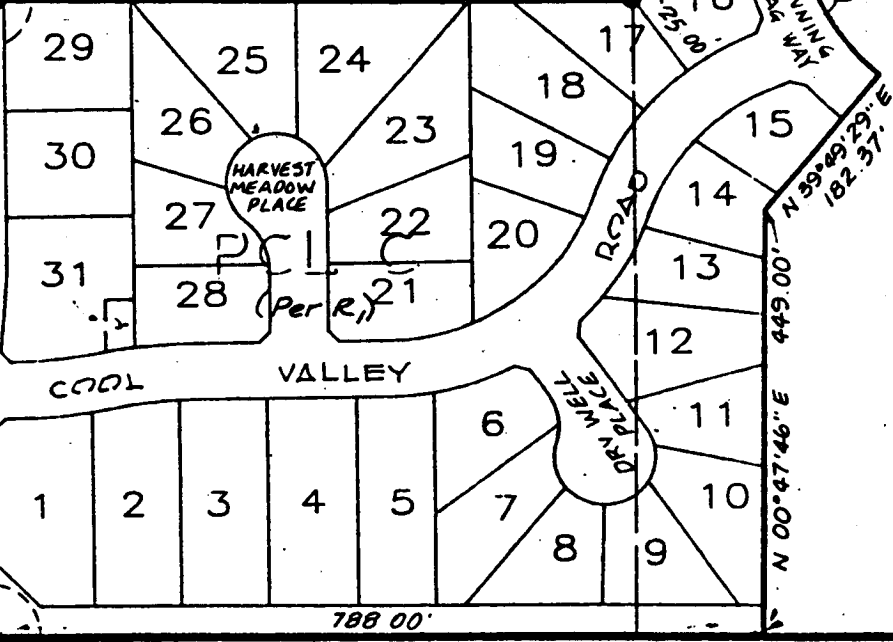
N 76° 48' 12" W 130.80'

N 19° 15' 56" E 108.31'

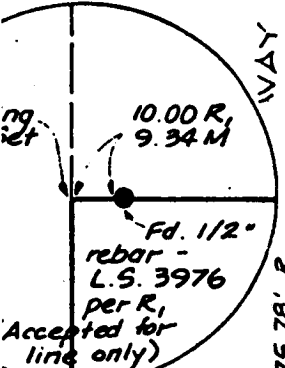
N 78° 16' 01" W 361.74'

35  
14.4  
ACR  
(GR)  
13.1  
ACR  
(NE)

ORACLE WAY  
675.78' R<sub>1</sub>  
669.87' M



35  
15.1  
ACR  
(GR)  
13.1  
ACR  
(NE)

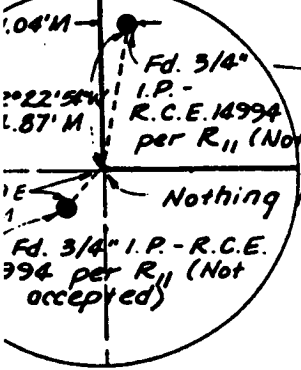


'TAIL 'B''

rd)  
ment  
ulvert  
38"

1324.67' M  
1320.00' R<sub>4</sub>  
1324.86' R<sub>7</sub> & R<sub>11</sub>

See Detail 'A'



'DETAIL 'A''

N 89° 12' 14"  
N 89° 00' 00" W  
N 89° 24' 06" W

LEGEND

- M Measured Data
- Found monument as noted

TR 1632