



Council Agenda Report

From: Ditas Esperanza, Capital Projects Engineer

Subject: Approve Final Design and Authorize the Preparation of Construction Bid Documents for the 13th Street Pedestrian Access Improvements from Park to Pine.

Date: December 5, 2017

Facts

1. The intersections of Pine at 13th and Park at 13th have been topics of concern and discussion with regards to pedestrian access and safety.
2. On November 17, 2015, the City Council directed staff to use Community Development Block Grant (CDBG) funds to upgrade four curb ramps at 13th and Pine to comply with ADA design standards. CDBG Funds may be used only to upgrade the curb ramps, and cannot be used for the pedestrian flashing pole lights. Council directed staff to find ways to address these other improvements.
3. In July 2016, San Luis Obispo Council of Governments (SLOCOG) notified the City that an Urban State Highway Act (USHA) Grant was available for \$590,600.
4. Goals of the project include better integrating the north and south sides of 13th Street. Design features that can include installing push button flashing pedestrian signs and painted crosswalks at Pine and Park. In addition, the Park at 13th intersection has storm water drainage issues. Further, the corridor needs to be evaluated for adequate street lighting, as well as evaluating the existing brick planters at Park Street, as it relates to ADA Accessibility. Options for correcting the deficiencies need to be analyzed, as they may impact the pedestrian solutions.
5. On December 20, 2016, City Council directed staff to engage the services of Wallace Group to prepare preliminary designs of the pedestrian access improvements and allocated funds under Budget No. 1009101-54520-C0105.
6. Staff performed Community Outreach of the preliminary designs as follows:
 - On September 14, 2017, staff presented the plans to the Main Street Design Committee.
 - On September 21, 2017, adjacent businesses were able to view the proposed plans. City staff greeted and engaged those in attendance in front of Fish Gaucho Restaurant with the concept plans on full display. Over 100 flyers were hand delivered to the adjacent businesses to invite them to the event. Several individuals dropped by to view the proposed concepts and offered their opinions and comments.
 - On October 16, 2017, staff presented the plans to the Main Street Board Members.
7. The work at Pine and 13th will be constructed using a 2016 CDBG Grant funds of \$143,300. The Grant has specific requirements, and therefore, the construction plans must “stand alone” and be advertised for bids, and designed separately from the rest of the project.
8. The remaining project is proposed to be funded using SB1 FY 2018-2019 allocation, USHA Grants from SLOCOG, and General Fund/Supplemental Sales Tax.

Options

1. Take no action;
2. Accept the preliminary design as presented, allocate funds, and move forward with the projects ;
3. Direct staff to amend the preliminary design and move forward with the projects.

Analysis and Conclusions

The area of 13th Street from Park to Pine is an area with significant pedestrian traffic and high vehicular traffic at certain times of the day. Downtown businesses have approached the City and asked for improvements to those two intersections to improve pedestrian safety. An additional goal has been to keep in mind the appearance and integration of this important part of the downtown shopping/dining area.

The project concept would improve ADA ramps, improving safety and moving the City forward in our ADA Transition Plan. The project will also include flashing crosswalk signs to better protect pedestrians crossing 13th Street. In addition, the project will include improved markings, resurfaced pavement from Spring to Riverside, and some improvements in the streetscape that will tie 13th Street more clearly into the downtown as seen on 12th Street. The revised preliminary design incorporates comments received during community outreach, namely shortening the pedestrian islands at Park Street without losing parking spaces, and adding ornamental streetlights at the Pine Street intersection.

Fiscal Impact

Preliminary project funding and proposed sources are as follows:

| | 13 th St & Pine Curb Ramps | Remainder of Project | Total |
|--|--|-------------------------|---------------------|
| Construction | \$ 119,640 | \$ 1,500,000 | \$ 1,619,640 |
| Design* | 23,740 | 40,000 | 63,740 |
| Total | 143,380 | 1,540,000 | 1,683,380 |
| Funding Source: | | | |
| CDBG – Program Year 2016 | 143,380 | - | 143,380 |
| SB 1 | | 500,000 | 500,000 |
| Grant | | 590,600 | 590,600 |
| General Fund/Supplemental Sales Tax | | 449,400 | 449,400 |
| Total | \$ 143,380 | \$ 1,540,000 | \$ 1,683,380 |

* includes contingency

On March 1, 2016, City Council approved resolution #16-016 appropriating \$124,535 in CDBG funds towards the 13th Street & Pine Curb Ramp Project. On April 14, 2017, City staff administratively transferred \$18,845 in unspent funds from the 2014 and 2015 program years and redirected those funds towards the 13th Street Project. No additional appropriations for CDBG funding is needed at this time.

However, staff is requesting appropriations of \$40,000 for the design phase of the non-CDBG component of this project. The project budget will be updated and finalized for City Council’s review at the time of award for construction.

Recommendation

1. Adopt Resolution No. 17-xxx establishing a budget as follows: General Fund/Supplemental Sales Tax \$40,000, Budget No. 1009101-54520-C0105
2. Authorize the City Manager to engage the services of Wallace Group to prepare final design of the 13th Street Park to Pine Pedestrian Enhancements, for 13th and Pine intersection using CDBG Grant funds for \$23,740, and the remainder of the project, including contingency for \$40,000.

Attachments

1. Resolution
2. Exhibits

RESOLUTION NO. 17-XXX

RESOLUTION OF THE CITY COUNCIL OF THE CITY OF EL PASO DE ROBLES
APPROVE FINAL DESIGN AND AUTHORIZE THE PREPARATION OF CONSTRUCTION
BID DOCUMENTS FOR THE 13TH STREET PEDESTRIAN ACCESS IMPROVEMENTS
FROM PARK TO PINE

WHEREAS, the intersections of Pine at 13th and Park at 13th have been topics of concern and discussion with regards to pedestrian access and safety. On November 17, 2015, the City Council directed staff to use Community Development Block Grant (CDBG) funds to upgrade four curb ramps at 13th and Pine to comply with ADA design standards. The CDBG Funds may be used only to upgrade the curb ramps, and cannot be used for the pedestrian flashing pole lights. Council directed staff to find ways to address these other improvements; and

WHEREAS, in July 2016, San Luis Obispo Council of Governments (SLOCOG) notified the City that an Urban State Highway Act (USHA) Grant was available for \$590,600; and

WHEREAS, goals of the project include better integrating the north and south sides of 13th Street. Design features that can include installing push button flashing pedestrian signs and painted crosswalks at Pine and Park. In addition, the Park at 13th intersection has storm water drainage issues. Further, the corridor needs to be evaluated for adequate street lighting, as well as evaluating the existing brick planters at Park Street, as it relates to ADA Accessibility. Options for correcting the deficiencies need to be analyzed, as they may impact the pedestrian solutions; and

WHEREAS, on December 20, 2016, City Council directed staff to engage the services of Wallace Group to prepare preliminary designs of the pedestrian access improvements and allocated funds under Budget No. 1009101-54520-C0105; and

WHEREAS, staff performed Community Outreach of the preliminary designs as follows: On September 14, 2017, staff presented the plans to the Main Street Design Committee. On September 21, 2017, adjacent businesses were able to view the proposed plans. City staff greeted and engaged those in attendance in front of Fish Gaucho Restaurant with the concept plans on full display. Over 100 flyers were hand delivered to the adjacent businesses to invite them to the event. Several individuals dropped by to view the proposed concepts and offered their opinions and comments. On October 16, 2017, staff presented the plans to the Main Street Board Members; and

WHEREAS, the work at Pine and 13th will be constructed using a 2016 CDBG Grant funds of \$143,300. The Grant has specific requirements, and therefore, the construction plans must “stand alone” and be advertised for bids, and designed separately from the rest of the project. The remaining project is proposed to be funded using SB1 FY 2018-2019 allocation, USHA Grants from SLOCOG and General Fund/Supplemental Sales Tax.

NOW, THEREFORE, THE CITY COUNCIL OF THE CITY OF EL PASO DE ROBLES DOES HEREBY RESOLVE AS FOLLOWS:

Section 1. All of the above recitals are true and correct and incorporated herein by reference.

Section 2. Accept the preliminary design as presented and move forward with the projects and allocate funds.

Section 3. Amend the preliminary design and direct staff to move forward with the projects.

Section 4. Adopt Resolution No. 17-xxx establishing a budget as follows: General Fund/ Supplemental Sales Tax \$40,000, Budget No. 1009101-54520-C0105

Section 5. Authorize the City Manager to engage the services of Wallace Group to prepare final design of the 13th Street Park to Pine Pedestrian Enhancements, for 13th and Pine intersection using CDBG Grant funds for \$23,740, and the remainder of the project, including contingency for \$40,000.

Section 6. This Resolution shall take effect on the date it is approved by the City Council.

APPROVED this 5th day of December, 2017, by the following vote:

AYES:

NOES:

ABSENT:

ABSTAIN:

Steven W. Martin, Mayor

ATTEST:

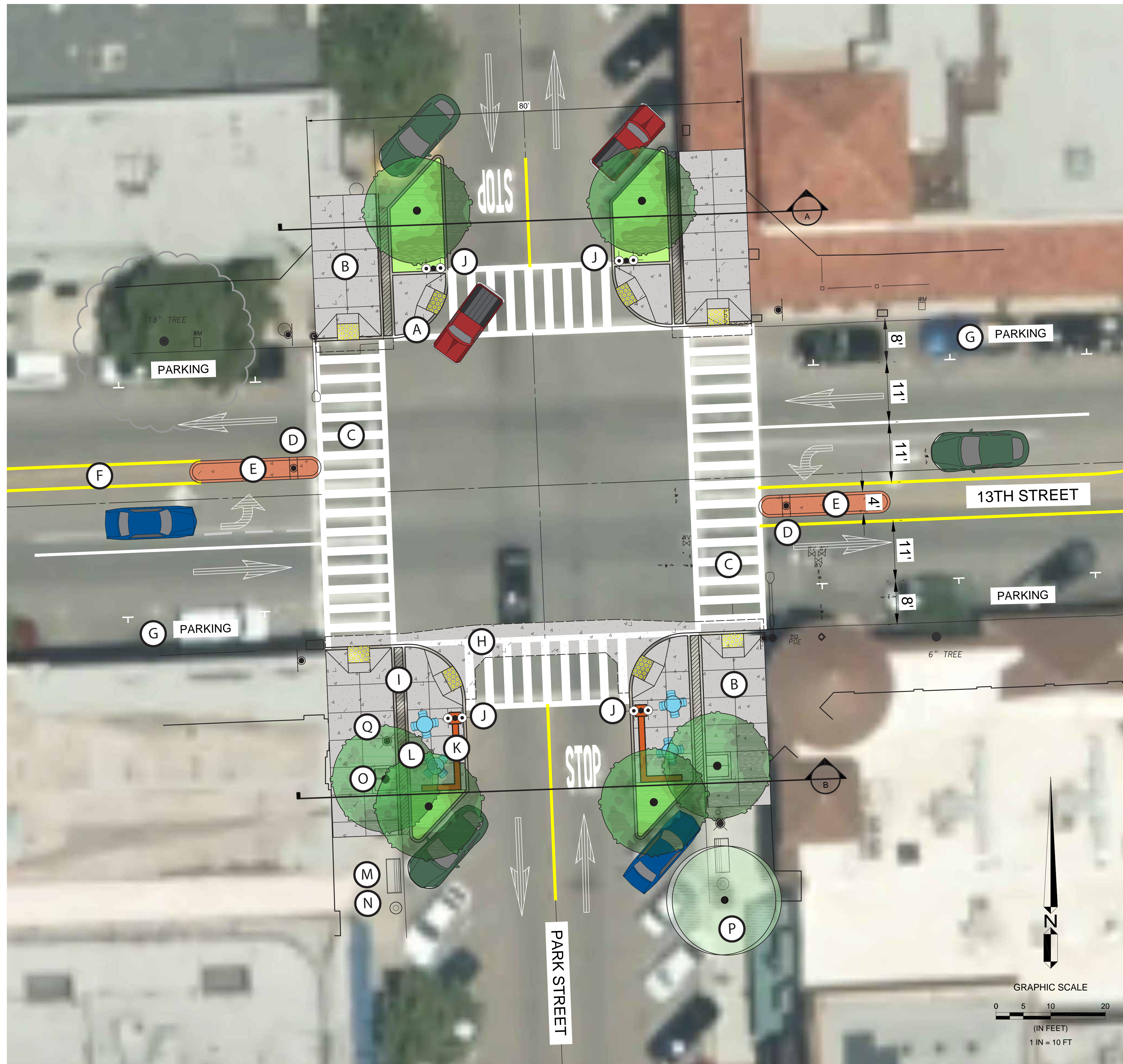
Kristen L. Buxkemper, Deputy City Clerk



PREFERRED ALTERNATIVE
PRELIMINARY CONCEPT MASTER PLAN
 13TH STREET STREETScape - CITY OF PASO ROBLES

11/03/2017





LEGEND

- A ACCESSIBLE RAMP
- B SIDEWALK IMPROVEMENTS
- C CROSSWALK STRIPING
- D RRFB - RECTANGULAR RAPID FLASHING BEACON (TYP).
- E MEDIAN W/ ENHANCED COLORED CONCRETE PAVING
- F LANE STRIPING
- G EXISTING ON-STREET PARKING
- H CROSS GUTTER
- I CHANNEL DRAIN WITH METAL GRATE
- J DOUBLE HEAD HISTORIC STYLE LIGHT ON WALL PILASTER
- K SEAT WALL CAST-IN-PLACE CONCRETE W/ PRE-CAST CAP
- L OUTDOOR PLAZA WITH STREET FURNISHINGS
- M BENCH
- N TRASH RECEPTACLE
- O TREE IN TREE GRATE
- P EXISTING TREE AND TREE GRATE
- Q EXISTING LIGHT TO BE REMOVED OR RELOCATED

PARKING

4 PARKING SPACES REMOVED

ENLARGEMENT A - PARK STREET INTERSECTION

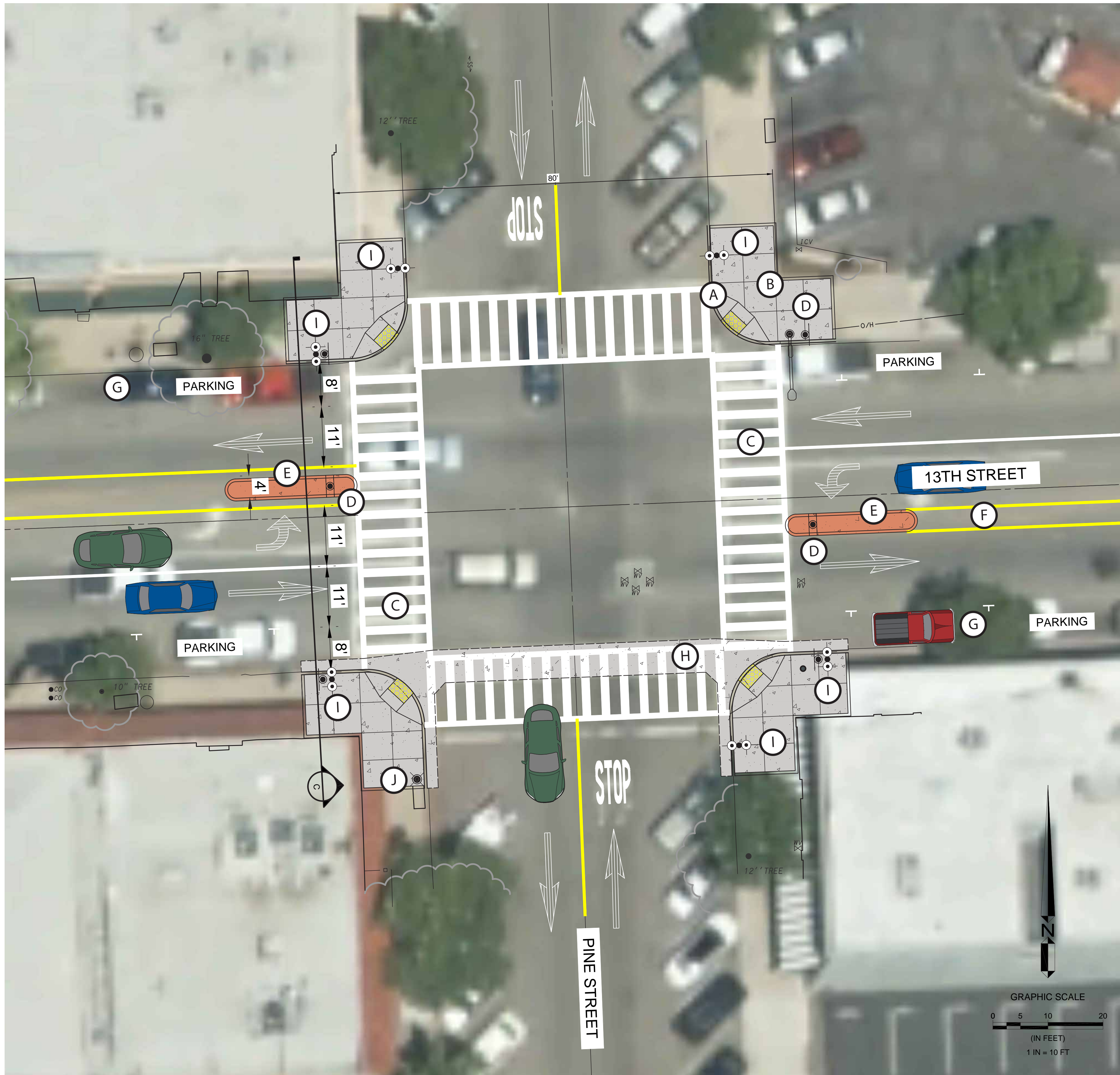
PRELIMINARY CONCEPT PLAN

13TH STREET STREETScape - CITY OF PASO ROBLES

11/03/2017



WALLACE GROUP



LEGEND

- A ACCESSIBLE RAMP
- B SIDEWALK IMPROVEMENTS
- C CROSSWALK STRIPING
- D RRFB - RECTANGULAR RAPID FLASHING BEACON (TYP).
- E MEDIAN W/ ENHANCED COLORED CONCRETE PAVING
- F LANE STRIPING
- G EXISTING ON-STREET PARKING
- H CROSS GUTTER
- i DOUBLE HEAD HISTORIC STYLE LIGHT
- j EXISTING SINGLE HEAD HISTORIC LIGHT

PARKING
NO PARKING IMPACTS

ENLARGEMENT B - PINE STREET INTERSECTION

PRELIMINARY CONCEPT PLAN
13TH STREET STREETScape - CITY OF PASO ROBLES

11/03/2017



WALLACE GROUP



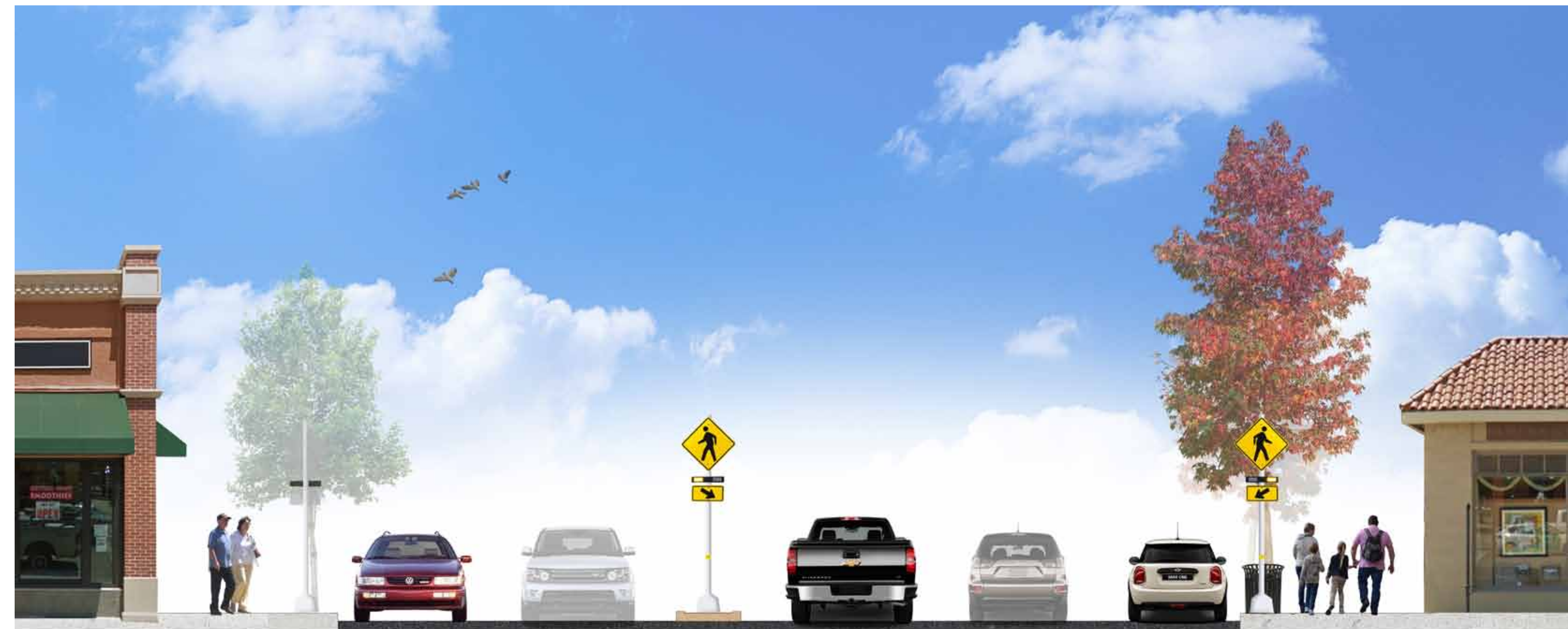
PARK STREET

SECTION A
NOT TO SCALE



PARK STREET

SECTION B
NOT TO SCALE



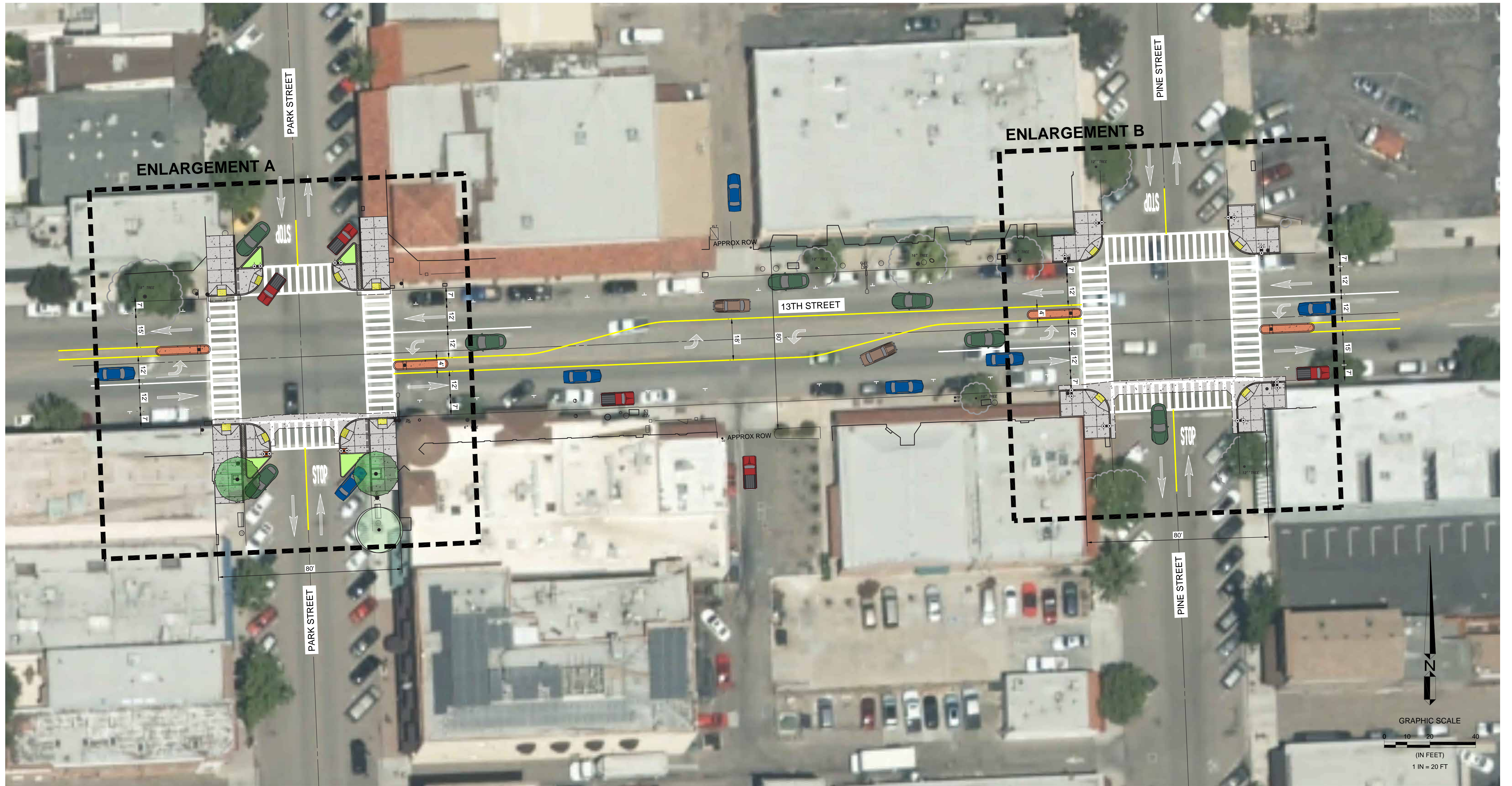
13TH STREET

SECTION C
NOT TO SCALE

CROSS SECTIONS
PRELIMINARY CONCEPT PLAN

13TH STREET STREETScape - CITY OF PASO ROBLES

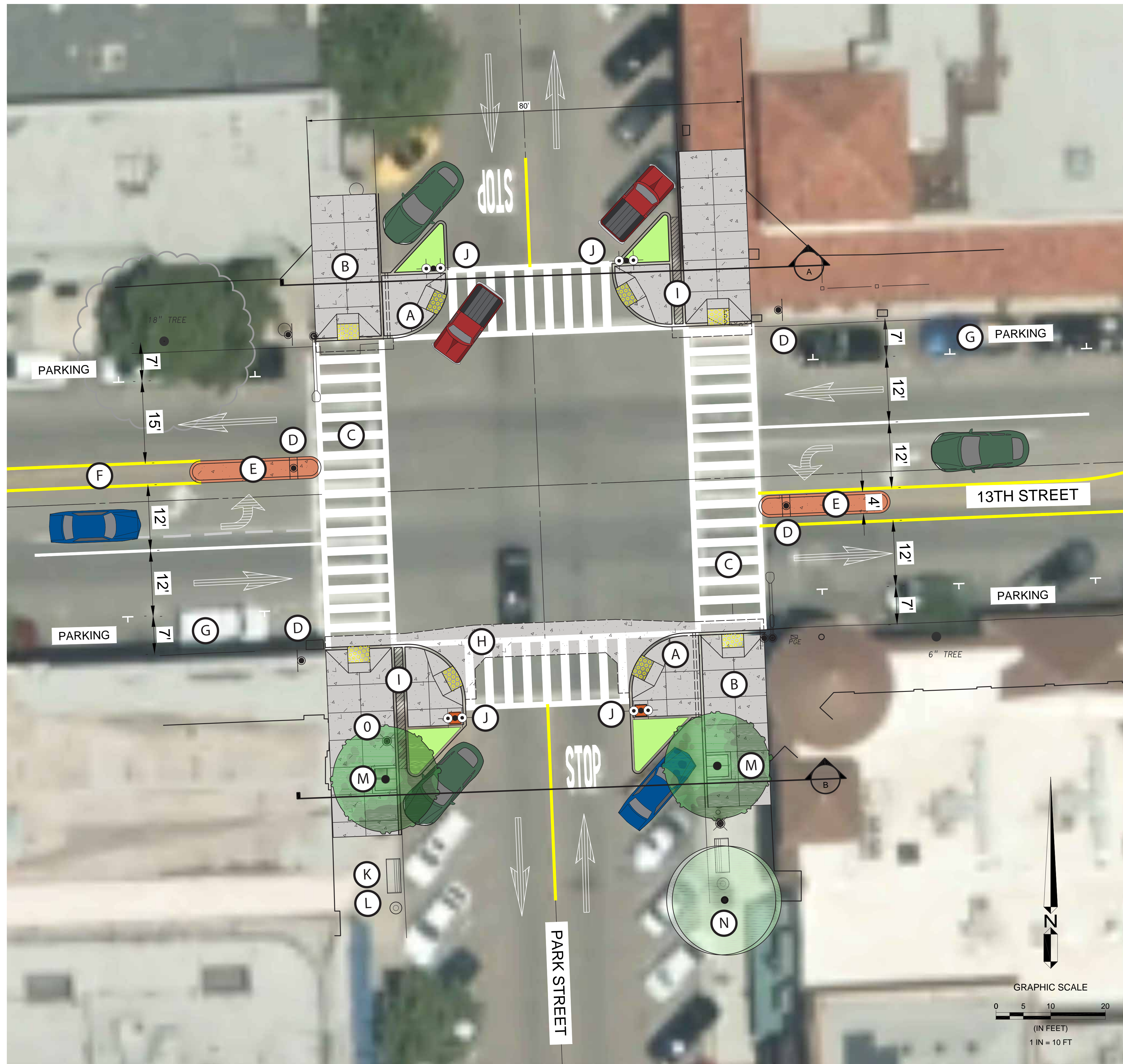




PREFERRED ALTERNATIVE (OPTIONAL)
PRELIMINARY CONCEPT MASTER PLAN
 13TH STREET STREETScape - CITY OF PASO ROBLES

11/16/2017





LEGEND

- A ACCESSIBLE RAMP
- B SIDEWALK IMPROVEMENTS
- C CROSSWALK STRIPING
- D RRFB - RECTANGULAR RAPID FLASHING BEACON (TYP).
- E MEDIAN W/ ENHANCED COLORED CONCRETE PAVING
- F LANE STRIPING
- G EXISTING ON-STREET PARKING
- H CROSS GUTTER
- I CHANNEL DRAIN WITH METAL GRATE
- J DOUBLE HEAD HISTORIC STYLE LIGHT
- K BENCH
- L TRASH RECEPTACLE
- M TREE IN TREE GRATE
- N EXISTING TREE AND TREE GRATE
- O EXISTING LIGHT TO BE REMOVED OR RELOCATED

PARKING
NO PARKING IMPACTS

ENLARGEMENT A - PARK STREET INTERSECTION (OPTIONAL)

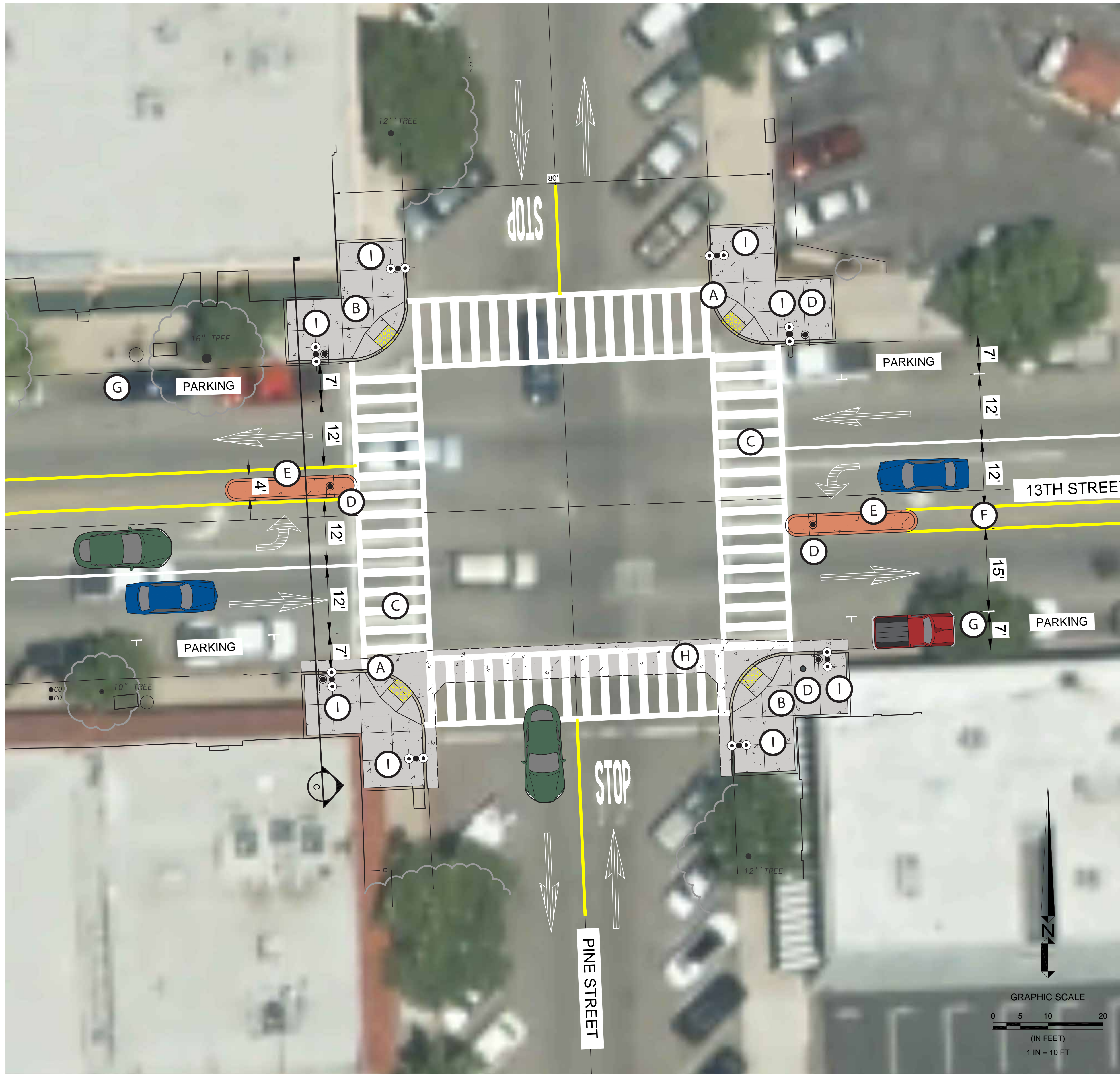
PRELIMINARY CONCEPT PLAN

13TH STREET STREETScape - CITY OF PASO ROBLES

11/16/2017



WALLACE GROUP



LEGEND

- A ACCESSIBLE RAMP
- B SIDEWALK IMPROVEMENTS
- C CROSSWALK STRIPING
- D RRFB - RECTANGULAR RAPID FLASHING BEACON (TYP).
- E MEDIAN W/ ENHANCED COLORED CONCRETE PAVING
- F LANE STRIPING
- G EXISTING ON-STREET PARKING
- H CROSS GUTTER
- i DOUBLE HEAD HISTORIC STYLE LIGHT

PARKING

NO PARKING IMPACTS

ENLARGEMENT B - PINE STREET INTERSECTION

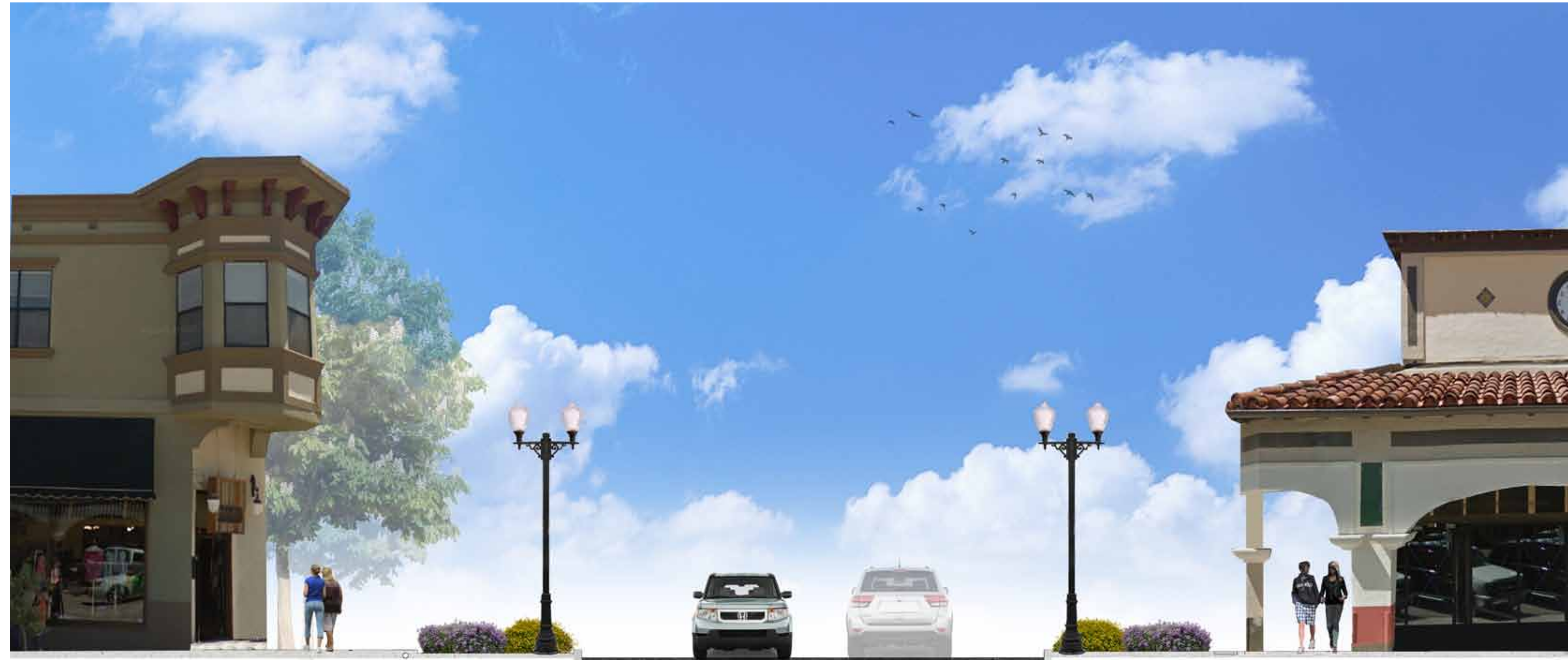
PRELIMINARY CONCEPT PLAN

13TH STREET STREETScape - CITY OF PASO ROBLES

11/16/2017



WALLACE GROUP



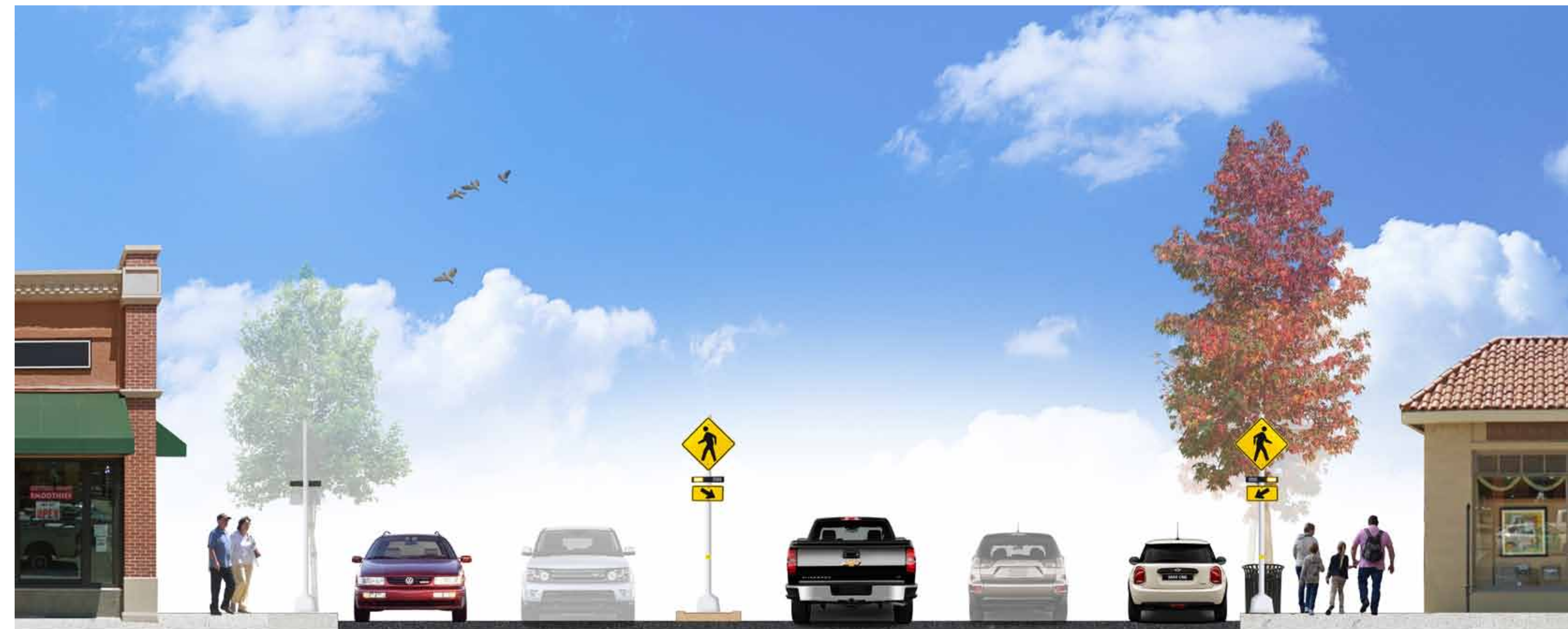
PARK STREET

SECTION A
NOT TO SCALE



PARK STREET

SECTION B
NOT TO SCALE



13TH STREET

SECTION C
NOT TO SCALE

CROSS SECTIONS (OPTIONAL)
PRELIMINARY CONCEPT PLAN
13TH STREET STREETScape - CITY OF PASO ROBLES

