

Supplemental Study Session Information:

This Sept. 15, 2016 presentation is provided as background briefing information for the May 24, 2017 Study Session. The Study Session will build on the information contained in this presentation.

46 East / Airport Road Circulation Issues and Options City Council Study Session

September 15, 2016





Welcome & Introductions

- Warren Frace – Community Development Director
- Dick McKinley – Public Works Director
- John Falkenstien – City Engineer
- Ditas Esperanza – Capital Projects Engineer
- Joe Fernandez – Traffic Engineer (consultant)
- Rich Murphy - SLOCOG
- John DiNunzio - SLOCOG



Study Session Purpose

- Part 1 - Highway 46 East History / Caltrans
- Part 2 - NE Development Potential
- Part 3 - Union Rd. / 46E interchange process
- Part 4 - Circulation Element Options

Council Discussion and Direction

Workshop Format – Council questions any time
Public Comment at the end of each section



Acronyms / Terms

- PSR / PDS – Project Study Report / Project Development Study
- PAED – Project Approval and Environmental Document
- PSE – Project Specifications and Estimates
- Caltrans – California Department of Transportation
- SLOCOG - San Luis Obispo Council of Governments
- DIF - Development Impact Fees / ABI 600
- CEQA - California Environmental Quality Act
- TDM – Transportation Demand Management
- LOS – level of service
- Warrants
- Circulation Element
- NE Quadrant



**PART I –
46 EAST HISTORY**

1948 / 1964 Freeway Agreement

- Agreement w/ San Luis Obispo County
- State pays for freeway
- Agreement may be modified

1
 2
 3
 4
 5
 6
 7
 8
 9
 10
 11
 12
 13
 14
 15
 16
 17
 18
 19
 20
 21
 22
 23
 24
 25
 26
 27
 28
 29
 30
 31

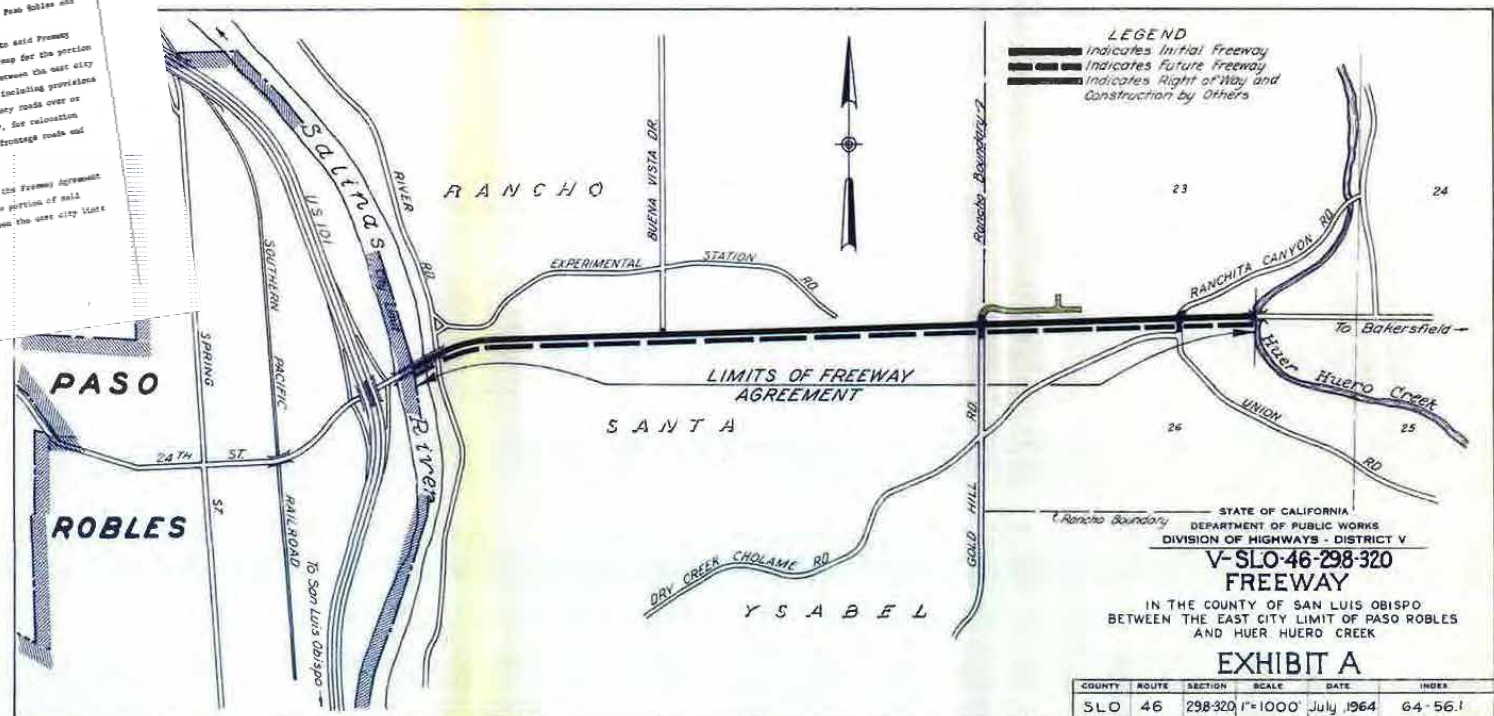
Dept. of Pub. Works
 DIVISION OF HIGHWAYS
FREWAY AGREEMENT
 THIS AGREEMENT, made and entered into, in duplicate,
 this 17 day of August 1964, by and
 between the STATE OF CALIFORNIA, acting by and through the
 Department of Public Works, hereinafter referred to as "the
 State," and the COUNTY OF SAN LUIS OBISPO, hereinafter referred
 to as "the County,"

WITNESSETH:
 WHEREAS, the California Highway Commission on July 17,
 1947, adopted a resolution declaring that portion of State
 Highway Route 33 (Now State Highway Route 46) in the County of
 San Luis Obispo between State Highway Route 2 (Now State Highway
 Route 101) in the City of Paso Robles and 1 mile east of
 Estrella River to be a freeway; and

WHEREAS, State and County have heretofore entered
 into a Freeway Agreement dated June 14, 1948, relating to
 that portion of State Highway Route 33 (Now State Highway Route
 46) in the County of San Luis Obispo, between Paso Robles and
 1 mile east Estrella River; and

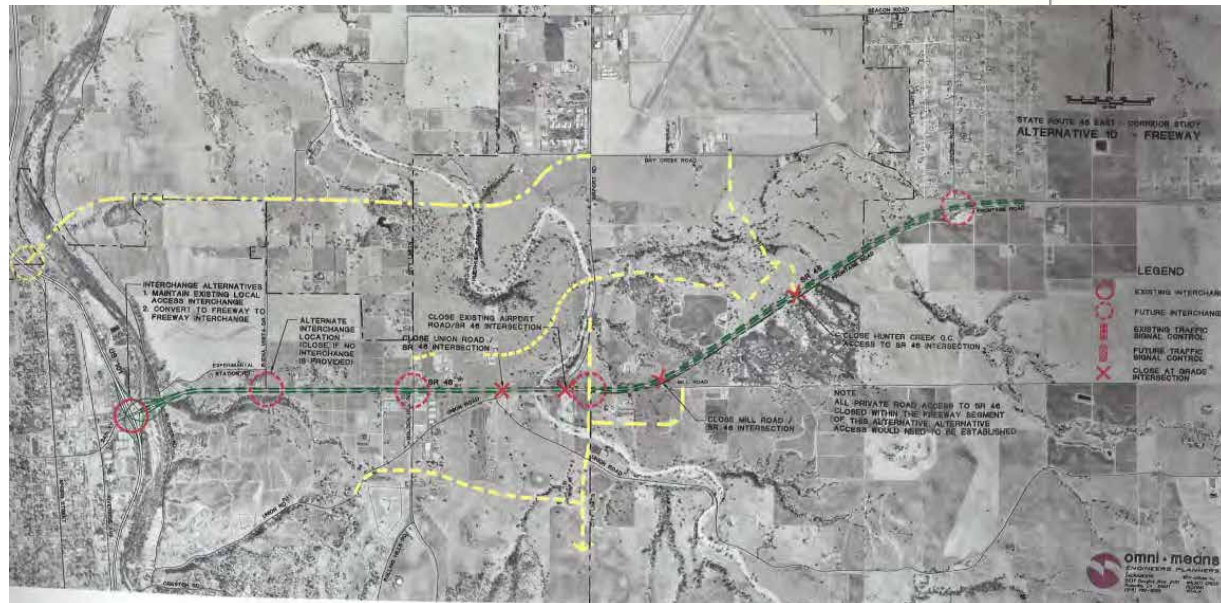
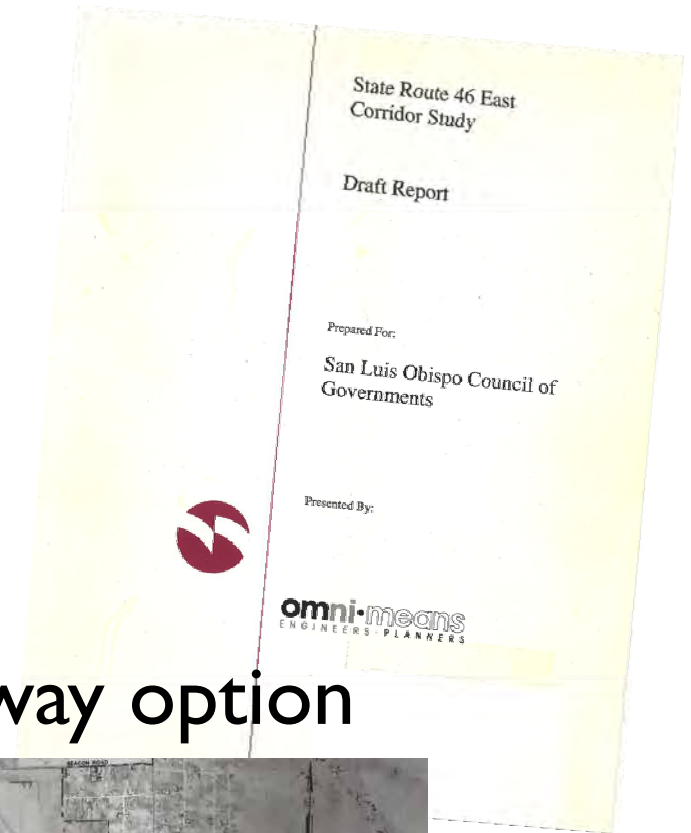
WHEREAS, subsequent to entering into said Freeway
 Agreement the State has prepared a new map for the portion
 of said freeway on State Highway Route 46 between the east city
 limit of Paso Robles and Huer Huero Creek, including provisions
 for closing County roads, for carrying County roads over or
 under or to a connection with such freeway, for relocation
 of County roads, and for construction of frontage roads and
 other local roads,

NOW, THEREFORE, it is agreed:
 1. This agreement supersedes the Freeway Agreement
 dated June 14, 1948, with respect to the portion of said
 freeway on State Highway Route 46 between the east city limit
 of Paso Robles and Huer Huero Creek.



200 | Caltrans 46E Corridor Study

- Parallel Route option
- Expressway option
- Freeway option
- Northern Bypass Freeway option



2003 Caltrans Route 46 Improvement Project

- Unique I-5 to US 101 east-west interconnect
- Focus Route of State's Interregional Transportation Strategic Plan (1 of 10 in State)
- Interstate Shipping Corridor
- Airport Road to I-5
- Safety Improvements
- Congestion Relief
- 4 lane Expressway

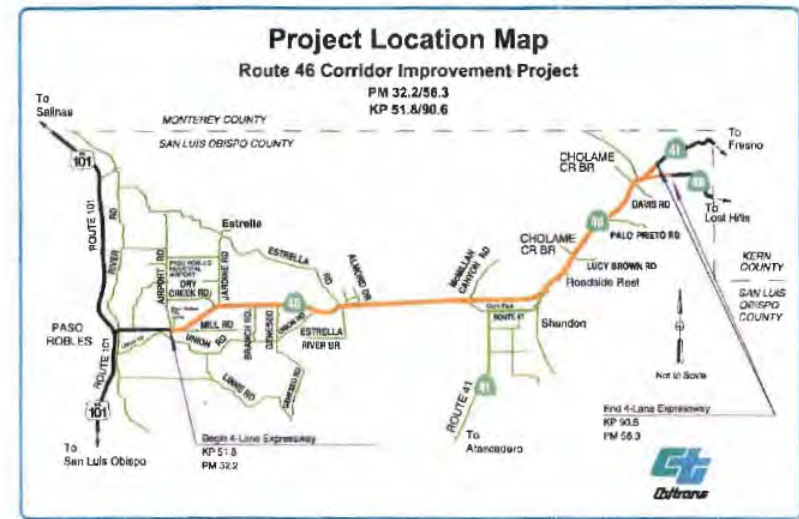
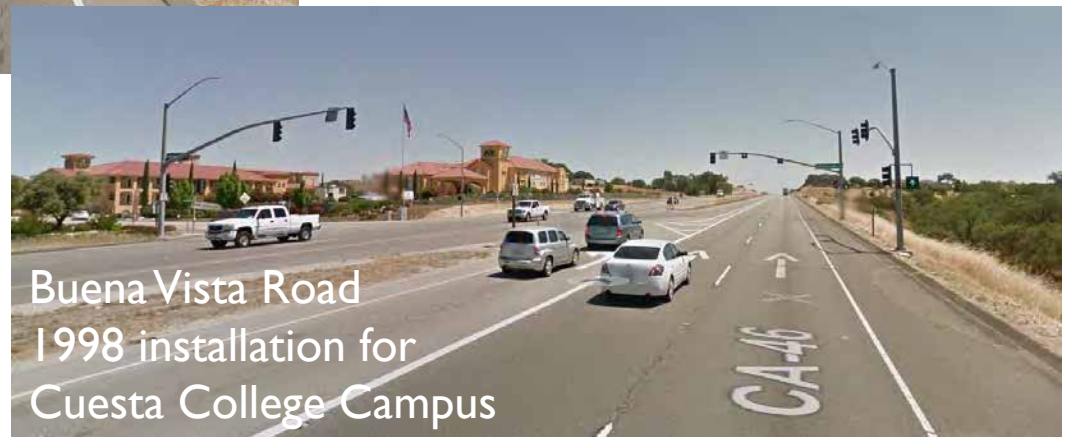
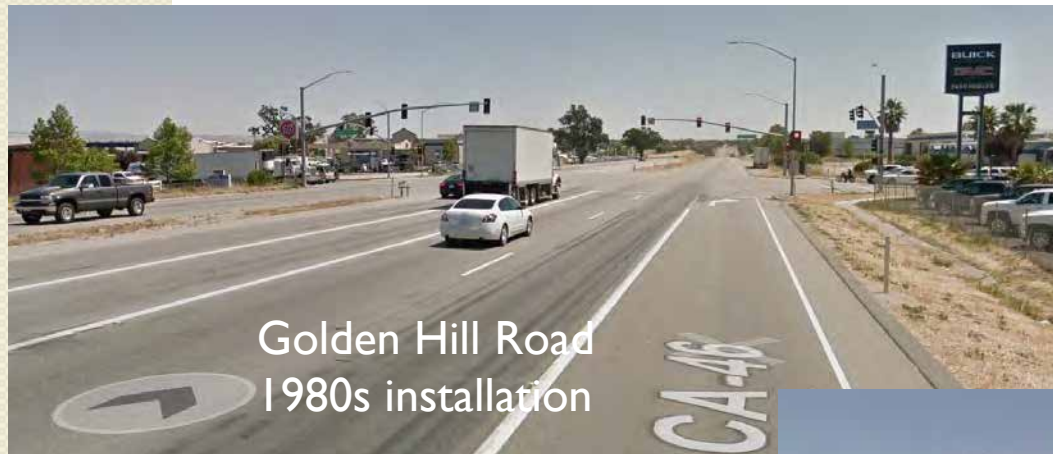


Figure 2.0-2. Project Location Map

Golden Hill & Buena Vista Signals

- Signals installed by City
- Caltrans opposed installation
- Legislative Relief required



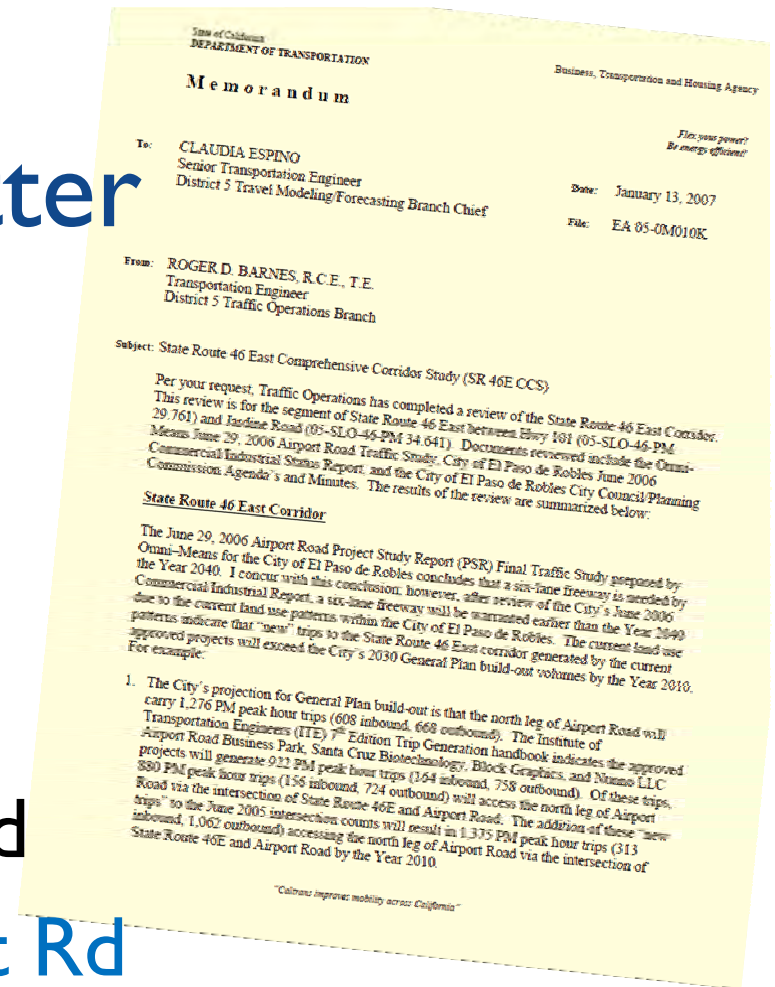
2006-14 City / SLOCOG Dual Lefts 46E / I01

- Operational Improvement
- Funding Opportunity

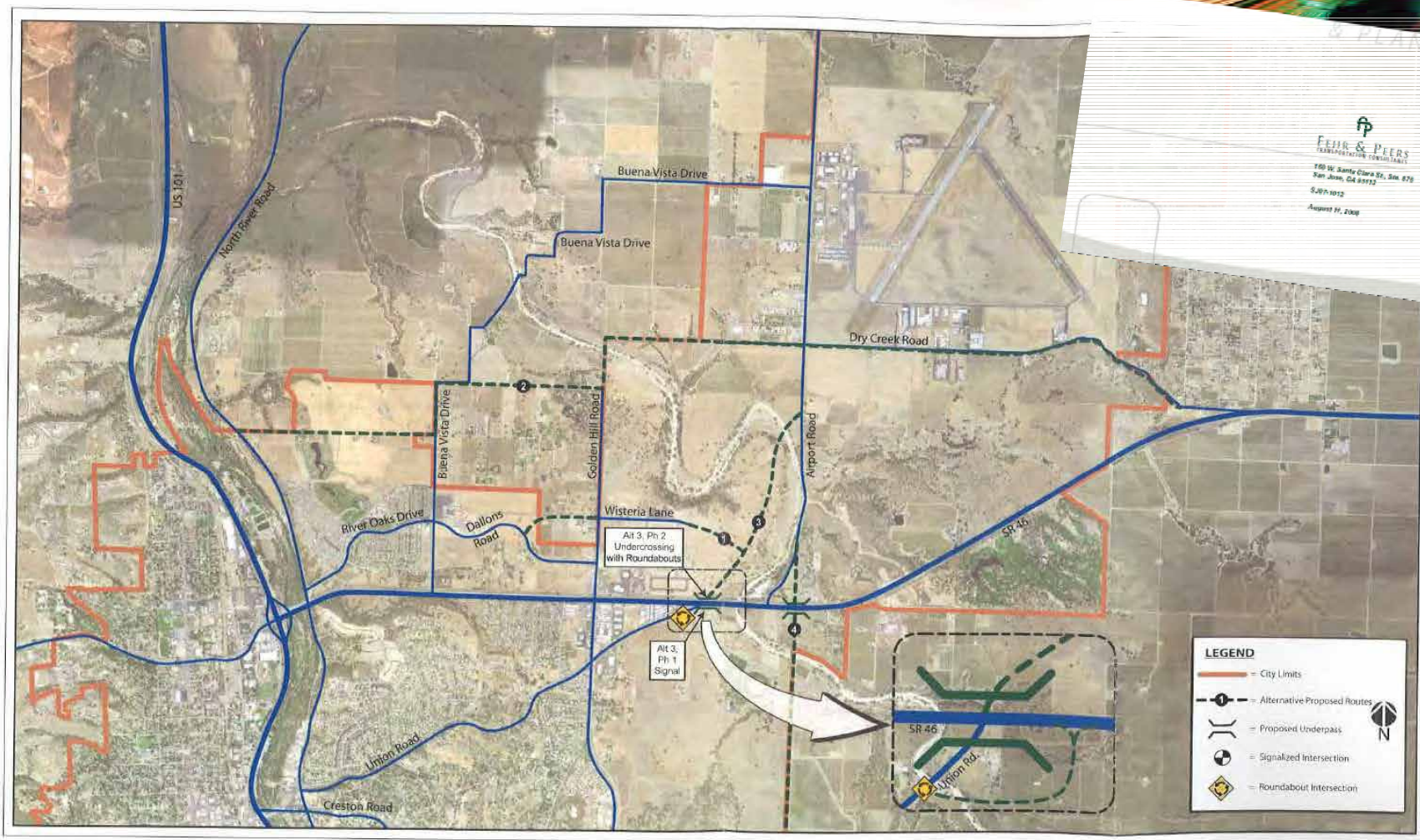
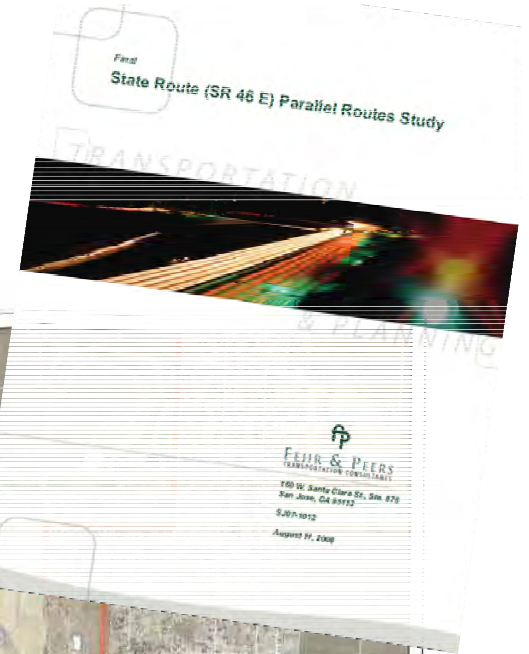


2007 Caltrans Letter

- 2030 General Plan underestimated traffic
- City traffic will create significant impacts
- 6 lane freeway required
- Signals at 46E / Airport Rd not feasible
- Interchange required



2008 City Parallel Route Study

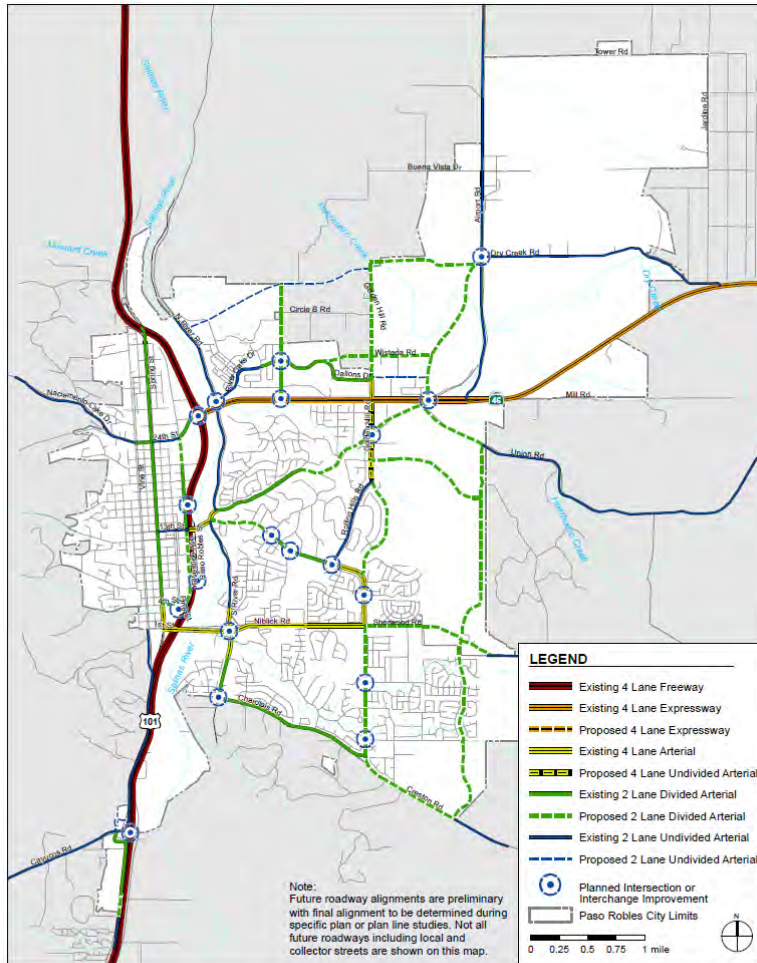


2009 Caltrans 46E Comprehensive Study

- Union Rd right-of-way preservation for grade separated interchange
- Funding Strategy
- Parallel Local Streets
- Enhance TDM, bike and pedestrian facilities



2011 City Circulation Element Amendment



FEHR & PEERS
TRANSPORTATION CONSULTANTS

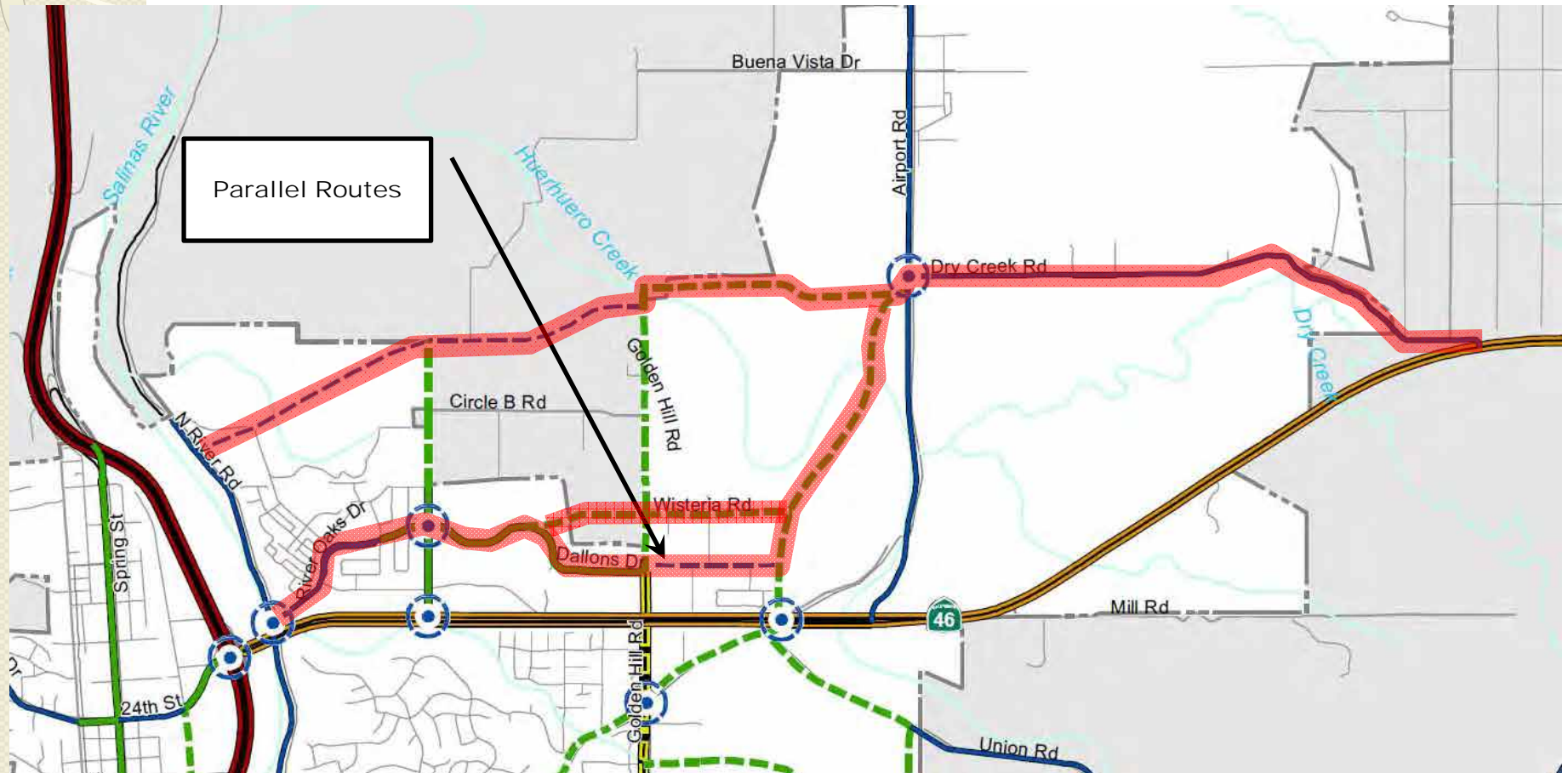
Circulation Master Plan Map

February 2011
N:\Projects_SJ10_Projects\SJ10_1190_Paso_Robles_GP_EIR\Graphics\GIS\Fig_CE_1_City_of_Paso_Robles_Circulation.mxd

Figure CE-1



2011 City Circulation Element Amendment



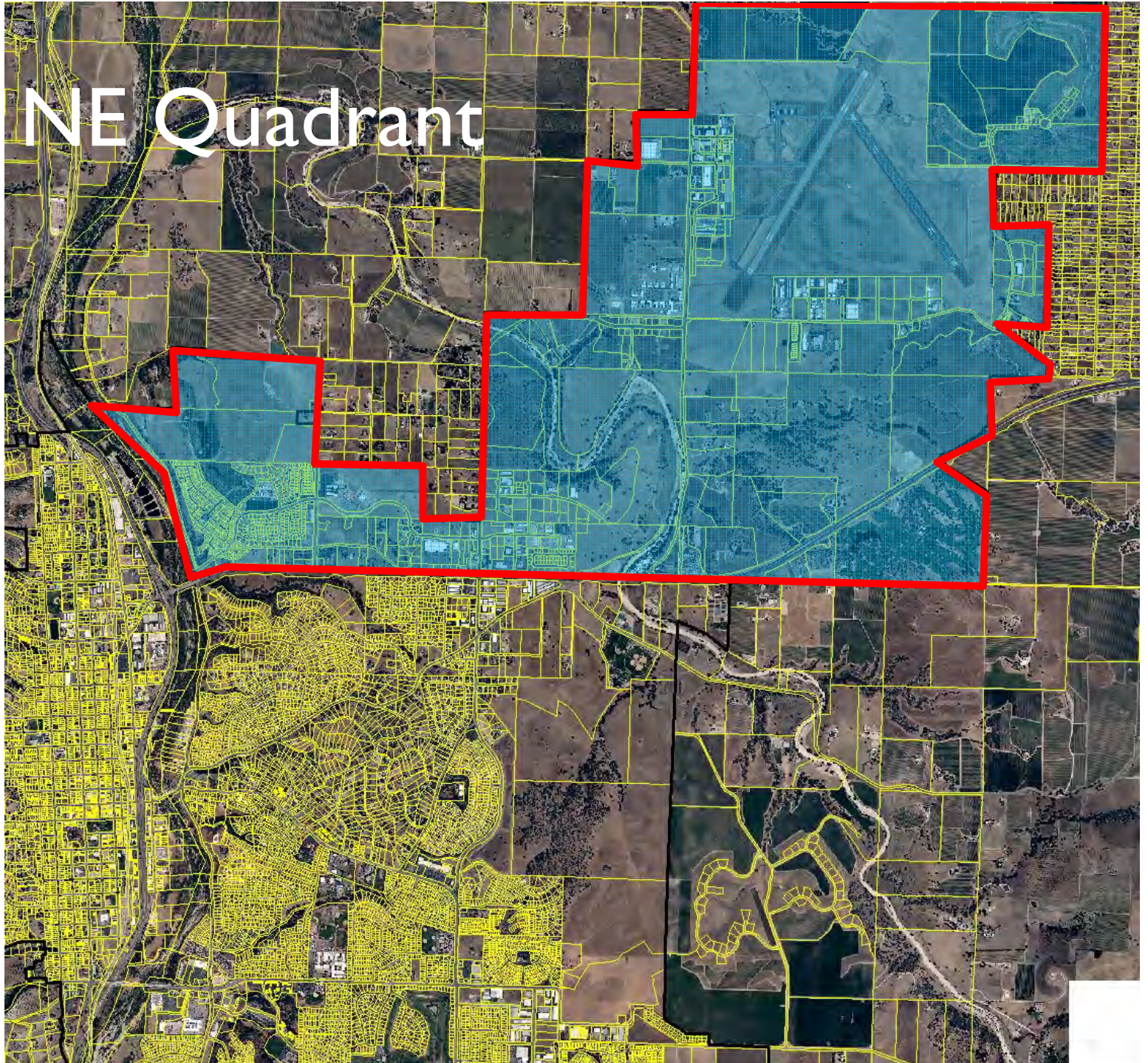


Public Comments

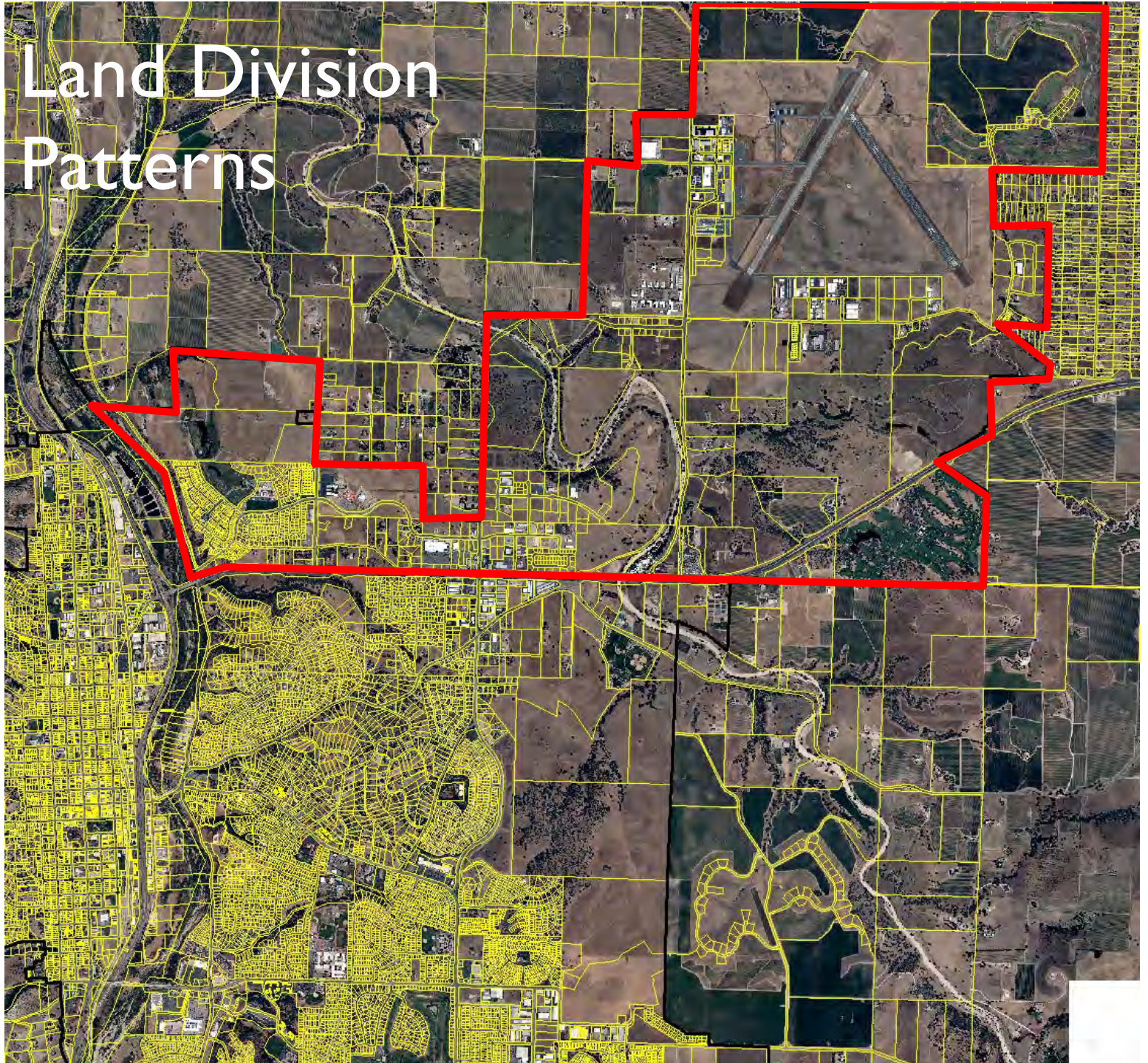


**PART 2 –
NORTHEAST QUADRANT
DEVELOPMENT
POTENTIAL**

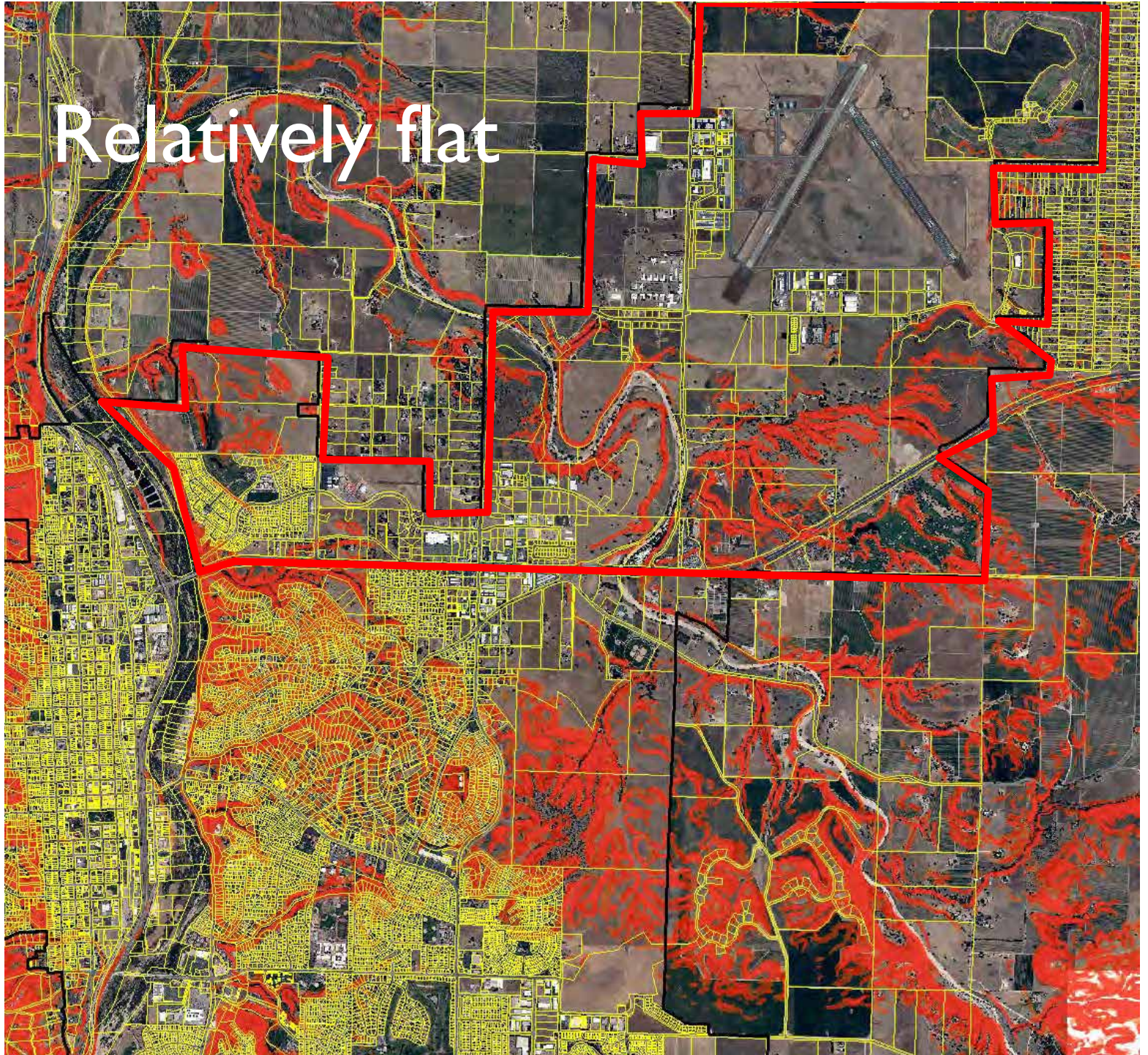
NE Quadrant



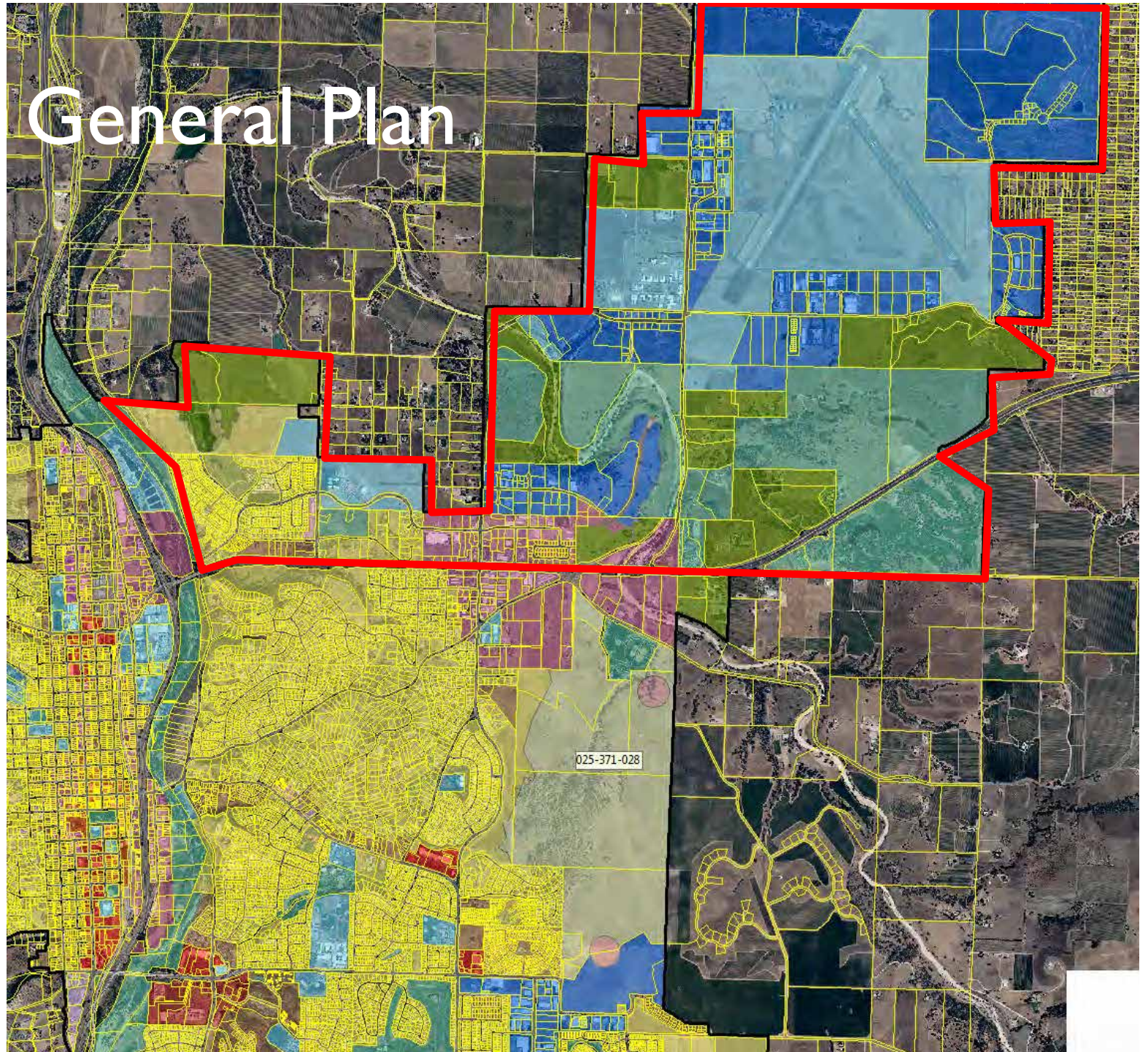
Land Division Patterns



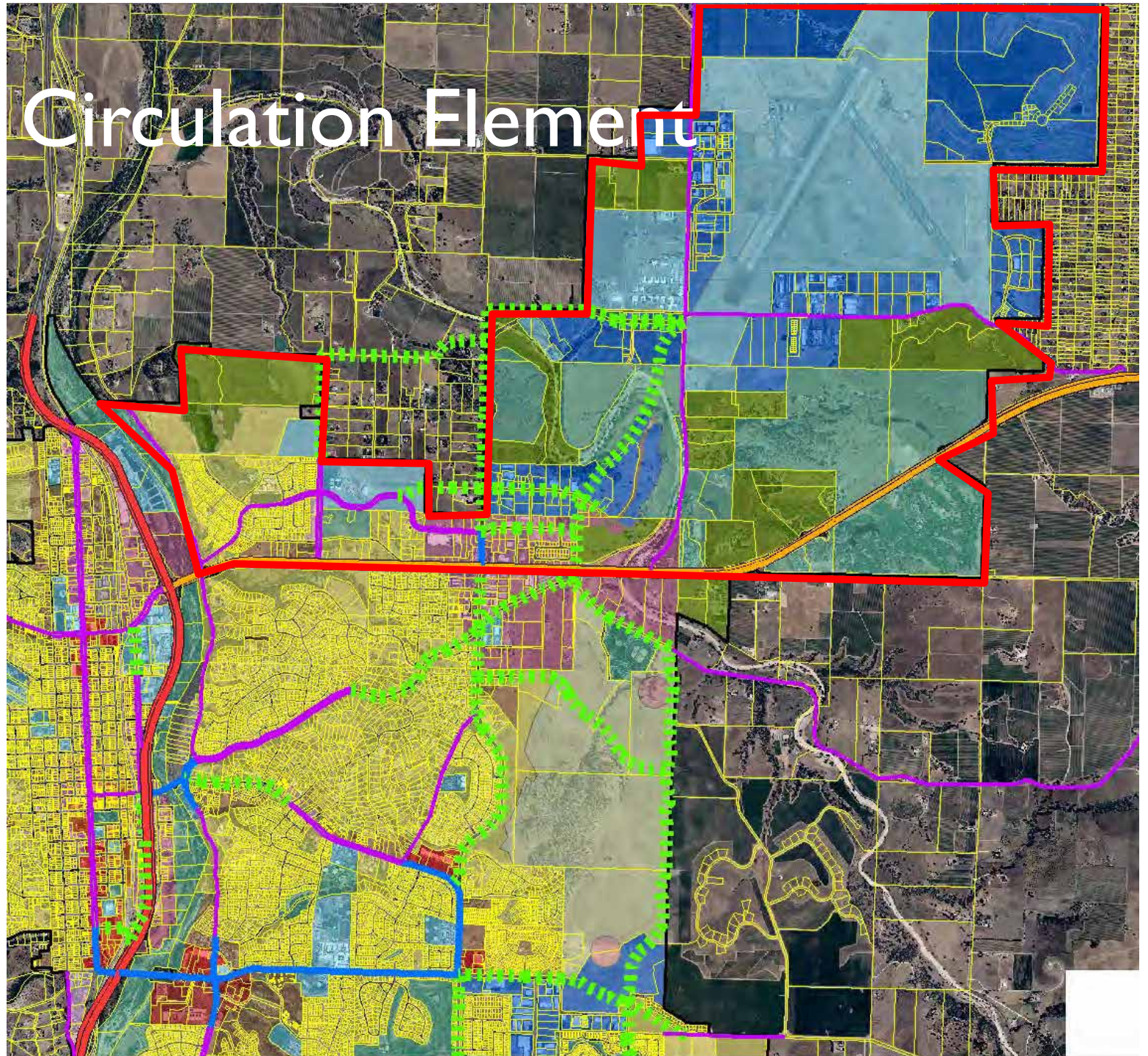
Relatively flat



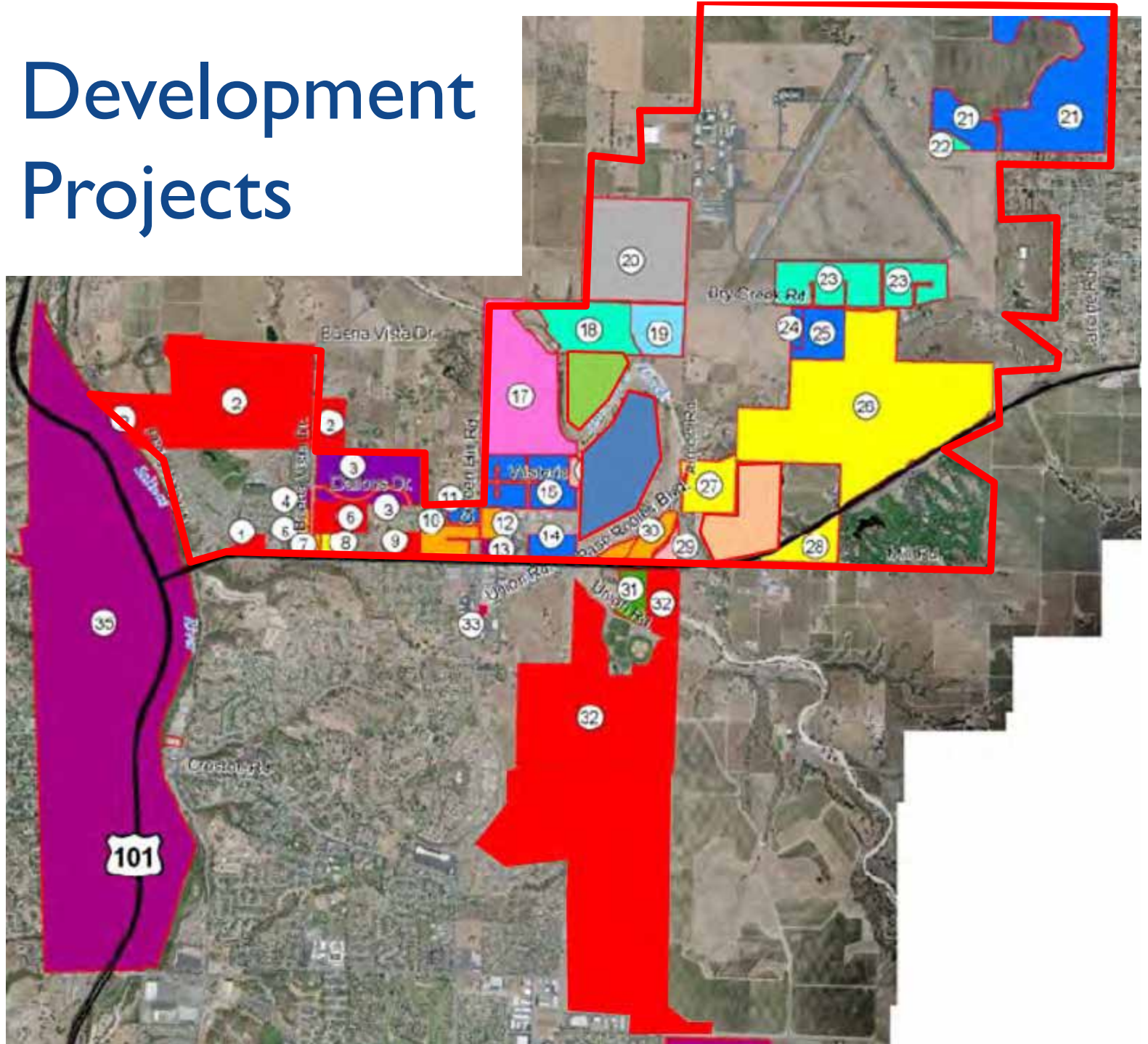
General Plan



Circulation Element



Development Projects





Public Comments



PART 3

UNION RD / 46E

INTERCHANGE PROCESS



2011-14 City PSR / PDS Process

- Next Step following 2009 Corridor Study
- Council Authorization - May 17, 2011
- Approved by Caltrans – April 17, 2014
- Funding
 - SLOCOG SHA Grant \$210,290
 - Regency Center Mitigation \$250,000
 - Total \$460,290

Study Area





PSR Alternatives

1. No Build
2. Signal
3. Roundabout (2 lane)
4. Overcrossing
5. Half Clover-leaf Interchange



Signal / Roundabout Alternatives

- Non-viable options:
 - Alt 2 - Signalized Intersection
 - Alt 3 - Roundabout
- Inadequate Future Traffic LOS
- Fails within 20 years

The Signalized and Roundabout Alternatives (Alternatives 2 & 3) have been since determined to be non-viable alternatives, so further discussion on them is deemed not necessary.



Viable Alternatives

4. Overcrossing
5. Half Clover-leaf Interchange

Multiple alternatives were investigated in connection with the preparation of this PSR-PDS document. Some of them have been eliminated (see 'non-viable alternatives' sub-section), and only two have remained as viable alternatives, in addition to the No Build Alternative.

Project Alternatives:

- Alternative 1 – No-Build Alternative
- Alternative 4 – Overcrossing Alternative
- Alternative 5 – Half Clover-leaf Interchange Alternative



2015 – today

PAED Process

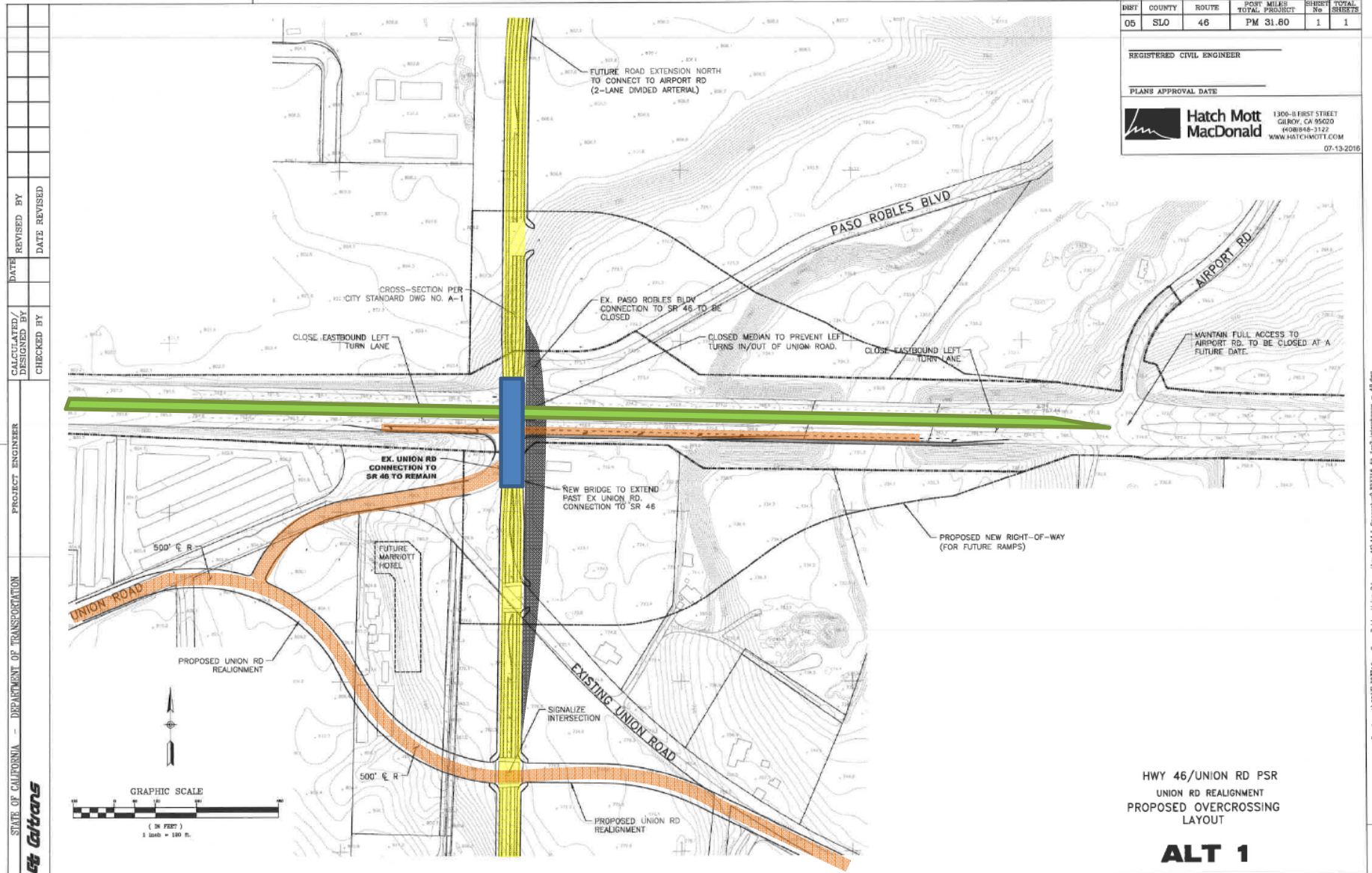
- Next Step following 2014 PSR - PDS
- Council Authorization – Sept. 15, 2015
- Mott McDonald consultant under contract
- Funding
 - SLOCOG - STIP funds \$450,000
 - City DIF \$500,000
 - Total \$950,000



PAED Alternatives

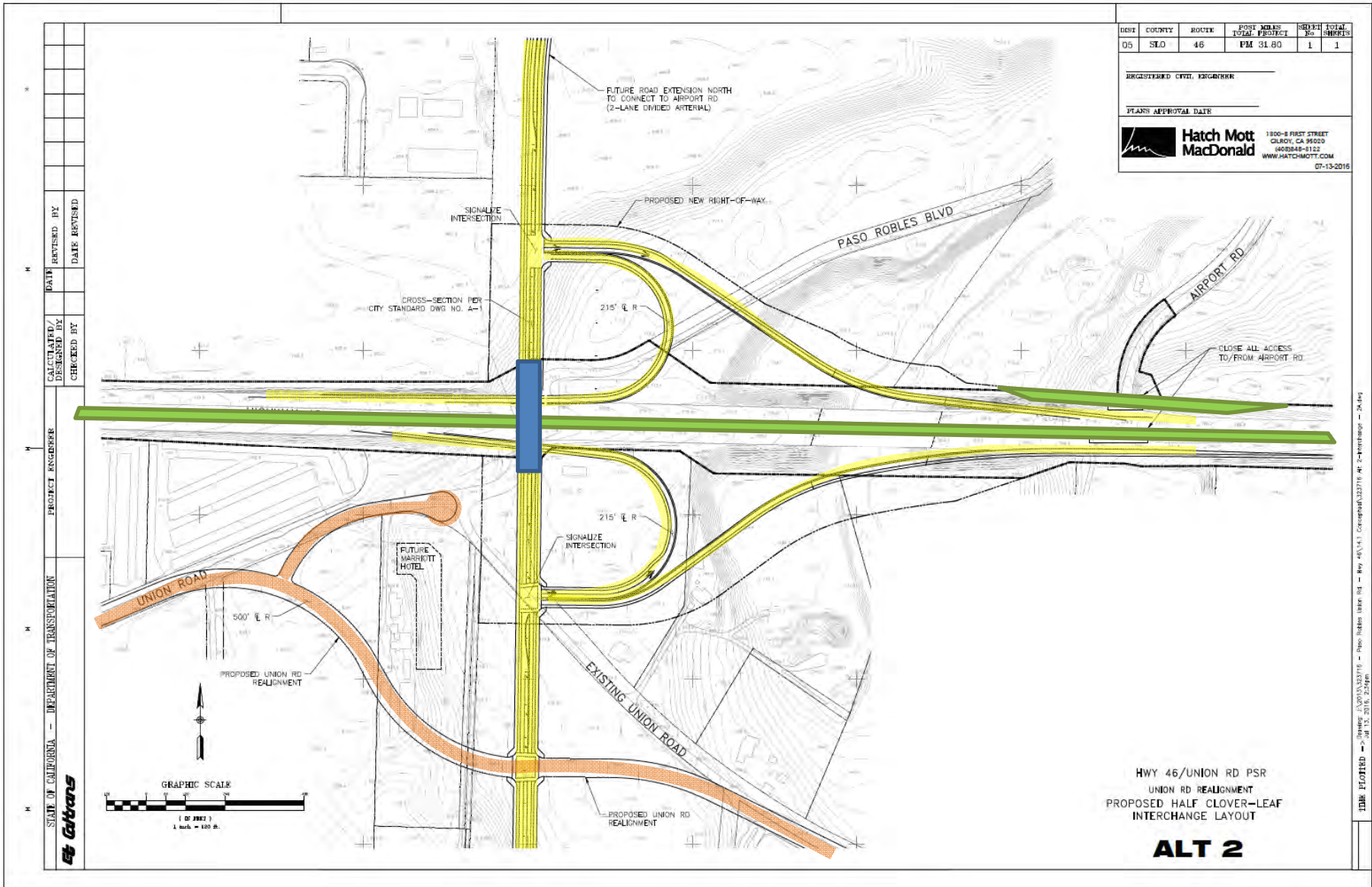
1. Overcrossing
2. Half Clover-leaf Interchange
3. Undercrossing (Huer Huero Creek)

Alt 1 - Overcrossing



15-0713A (SHEET) - Hwy 46/41, Connexion, 3/27/16 At 10:25: Interchange - 18 PWS

Alt 2 – Half Cover-leaf



DIST	COUNTY	ROUTE	POST MILES TOTAL PROJECT	SHEET No.	TOTAL SHEETS
05	SLO	46	PM 31.80	1	1

REGISTERED CIVIL ENGINEER

PLANS APPROVAL DATE

Hatch Mott MacDonald
 1800-B FIRST STREET
 OAKLEY, CA 94620
 (925)464-8122
 WWW.HATCHMOTT.COM
 07-13-2016

STATE OF CALIFORNIA - DEPARTMENT OF TRANSPORTATION	PROJECT ENGINEER	DESIGNED BY	REVISIONS BY
St. Gobans		CHECKED BY	DATE REVISED

HWY 46/UNION RD PSR
 UNION RD REALIGNMENT
 PROPOSED HALF CLOVER-LEAF
 INTERCHANGE LAYOUT

ALT 2

100% PLOTTED - 20160713 10:33:15 - Paso Robles Inter Rd - Hwy 46/46.1 Conceptual/2016 - R - 2-Interchange - 24.dwg
 Jul 13, 2016, 2:58pm

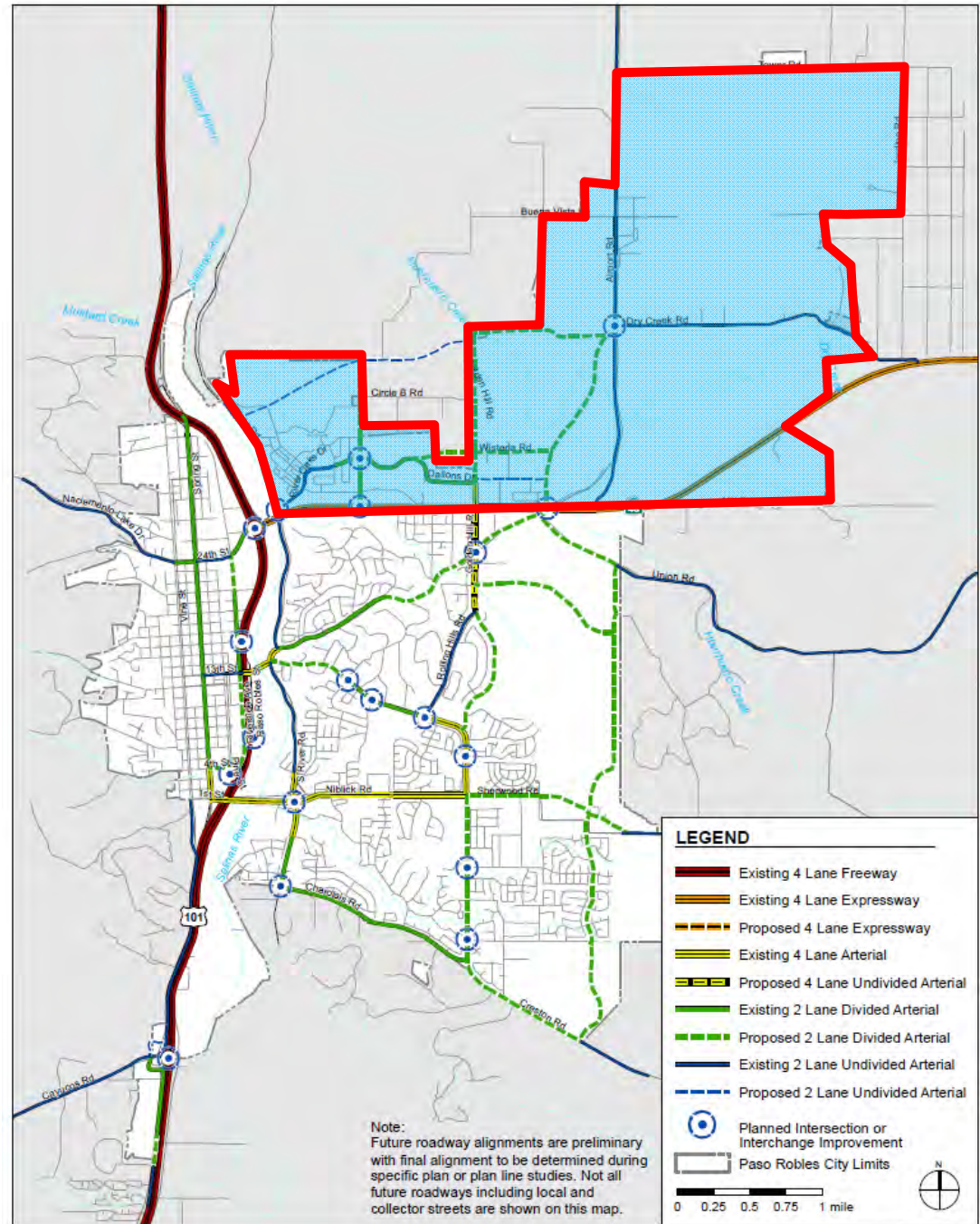


Public Comments

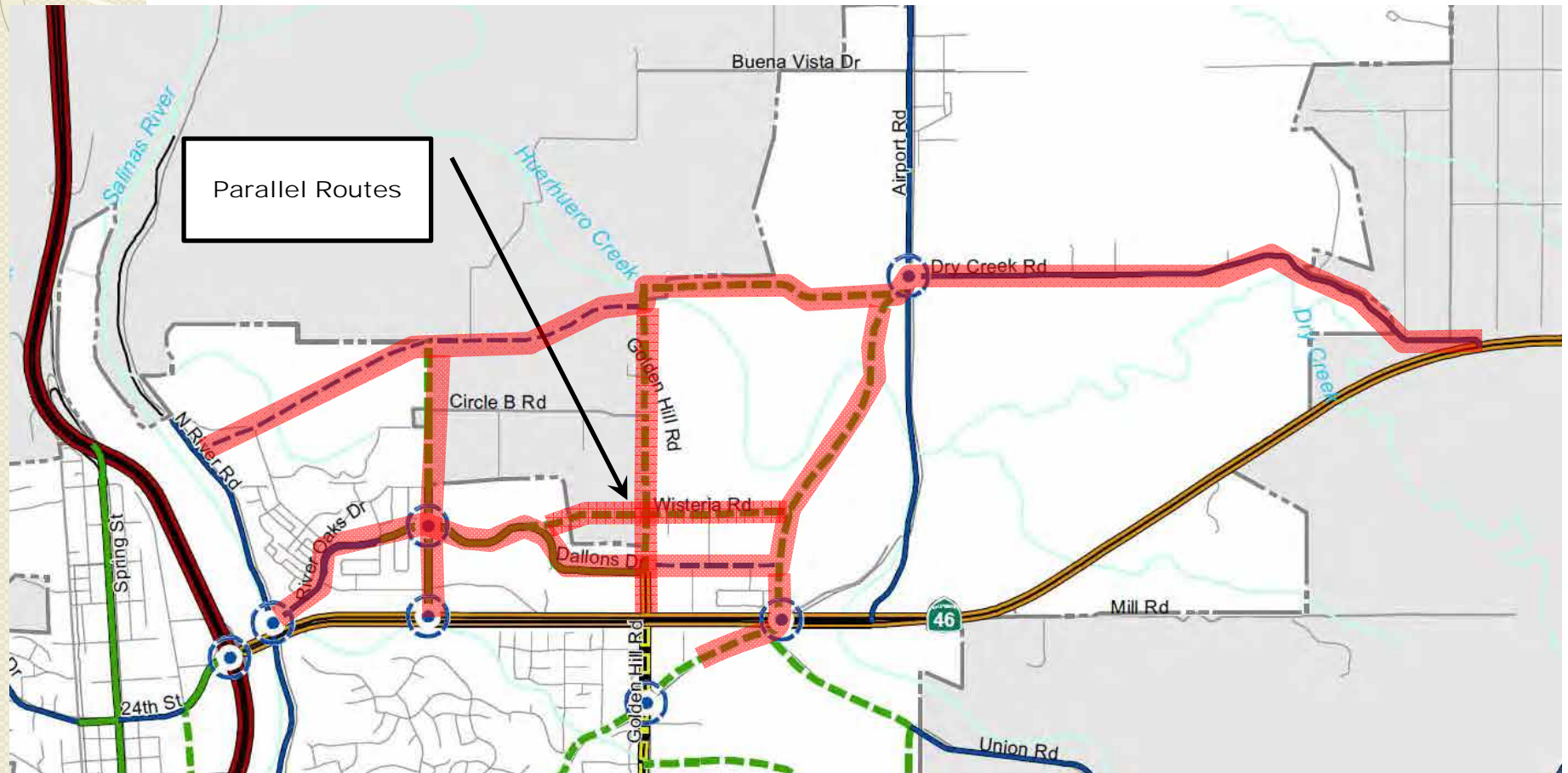


**PART 4 –
CIRCULATION
ELEMENT UPDATE**

Circulation Element



2011 Circulation Element Parallel Routes



Needs List Cost Estimates

DEVELOPMENT IMPACT FEE PROGRAM TABLE 4-2
CITY OF EL PASO DE ROBLES
PUBLIC FACILITIES NEEDS LIST THROUGH 2025

EXHIBIT "B" TO RESOLUTION 14-035

DAVID
TAUSSIG
 & ASSOCIATES, INC.

**DEVELOPMENT IMPACT FEE
 JUSTIFICATION STUDY
 CITY OF EL PASO DE ROBLES**



MARCH 20, 2014

Prepared by:

DAVID TAUSSIG & ASSOCIATES, INC.
 5000 BIRCH STREET, SUITE 6000
 NEWPORT BEACH, CALIFORNIA 92660
 (800) 969-4382

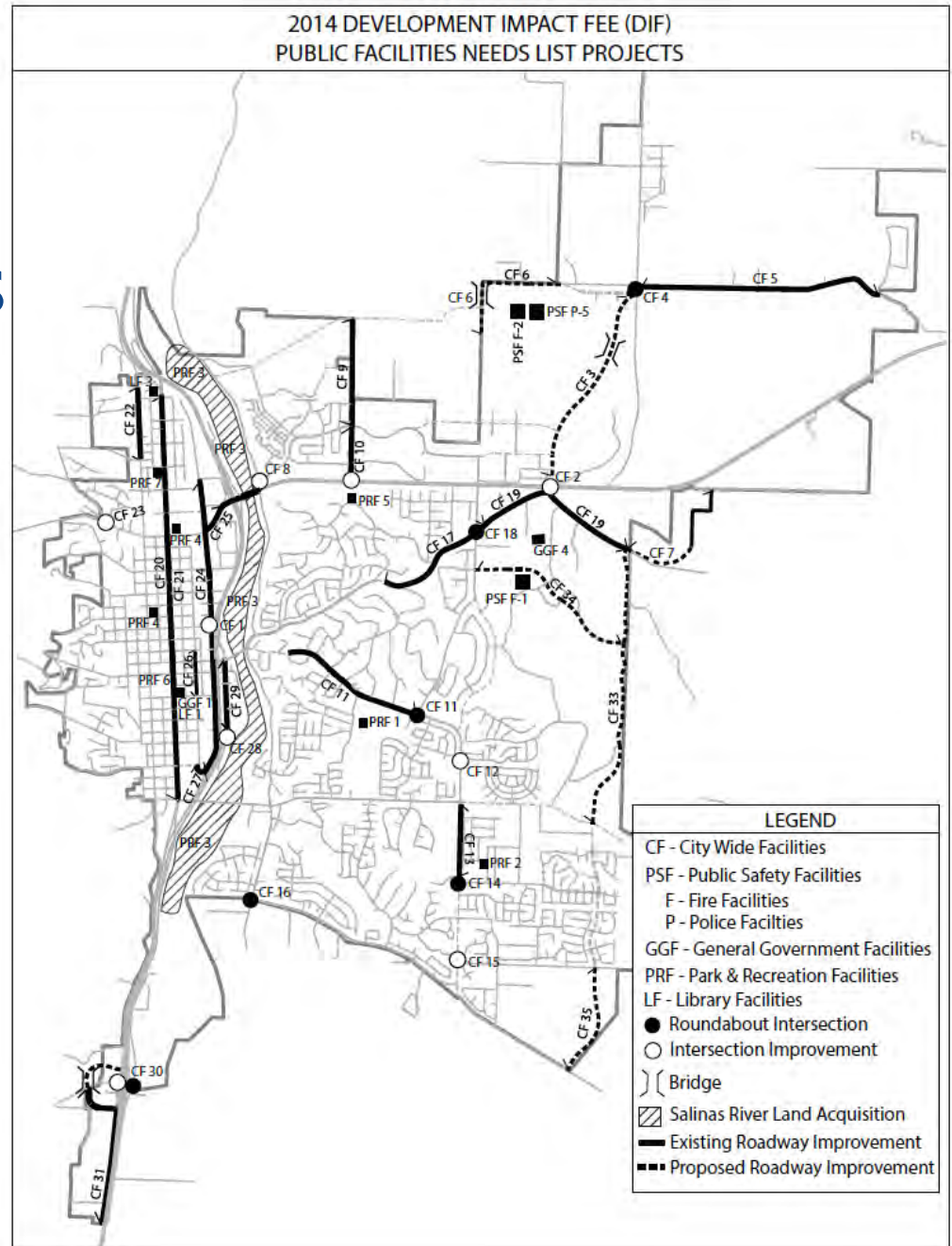
Public Finance
 Public Private Partnerships
 Urban Economics

Newport Beach
 San Francisco
 Fresno
 Riverside
 Chicago, Illinois
 Dallas, Texas

CC Resolution 14-035 Page 7 of 64

Facility Name	(1) Facilities Costs to City	(2) Off-Setting Revenues	(3) Net Costs to City	(4) Percent of Costs Allocated to New Development	(5) Costs Allocated to New Development	(6) Policy Background or Objective
A. TRANSPORTATION FACILITIES						
CITY-WIDE FACILITIES						
1 Highway 101/46East-Dual Left- 17th Street Ramps	\$12,440,000	\$0	\$12,440,000	33.15%	\$4,124,283	Circulation Element
2 Union Road - Highway 46E Interchange	\$30,000,000	\$0	\$30,000,000	33.15%	\$9,946,021	Circulation Element
3 Connection Road 46E to Airport Road, bridge over Huer Huero Road	\$25,005,917	\$0	\$25,005,917	33.15%	\$8,290,312	Circulation Element
4 Airport Road - Dry Creek Road Roundabout	\$2,976,962	\$0	\$2,976,962	33.15%	\$986,964	Circulation Element
5 Dry Creek Road - Airport Road to Aerotech Center Way	\$7,728,241	\$0	\$7,728,241	33.15%	\$2,562,175	Circulation Element
6 Huer Huero Bridge Dry Creek Road to Golden Hill Road	\$18,411,076	\$0	\$18,411,076	33.15%	\$6,103,898	Circulation Element
7 Connection Road - Mill Road to Union Road	\$2,812,872	\$0	\$2,812,872	33.15%	\$932,563	Updated SOI
8 River Oaks Drive - N. River Road	\$1,055,145	\$0	\$1,055,145	33.15%	\$349,816	Circulation Element
9 Buena Vista Drive - Cuesta College Frontage	\$1,316,341	\$0	\$1,316,341	33.15%	\$436,412	Circulation Element
10 Buena Vista Drive - Highway 46E	\$1,322,951	\$0	\$1,322,951	33.15%	\$438,603	Circulation Element
11 Creston Road - River Road to Rolling Hills Road	\$16,271,218	\$0	\$16,271,218	33.15%	\$5,394,462	Circulation Element
12 Creston Road - Lana Street	\$2,470,559	\$0	\$2,470,559	33.15%	\$819,074	Circulation Element
13 Creston Road - Niblick Road to Scott Street	\$5,704,224	\$0	\$5,704,224	33.15%	\$1,891,144	Circulation Element
14 Creston Road - Scott Street Roundabout	\$3,069,462	\$0	\$3,069,462	33.15%	\$1,017,631	Circulation Element
15 Creston Road - Meadowlark Road	\$3,675,194	\$0	\$3,675,194	33.15%	\$1,218,452	Circulation Element
16 Charolais Road - S. River Road Roundabout	\$6,223,415	\$0	\$6,223,415	33.15%	\$2,063,274	Circulation Element
17 Union Road - Kleck Road to Golden Hill Road	\$9,875,660	\$0	\$9,875,660	33.15%	\$3,274,117	Circulation Element
18 Union Road - Golden Hill Road Roundabout	\$6,502,163	\$0	\$6,502,163	33.15%	\$2,155,688	Circulation Element
19 Union Road - Golden Hill Road to East City Limits	\$5,239,735	\$0	\$5,239,735	33.15%	\$1,737,150	Circulation Element
20 Spring Street - 1st to 36th Streets	\$9,909,580	\$0	\$9,909,580	33.15%	\$3,285,363	Town Centre-Uptown Plan
21 Spring Street Traffic Signal Coordination	\$253,008	\$0	\$253,008	33.15%	\$83,861	Circulation Element
22 Vine Street - 32nd to 36th Streets	\$527,443	\$0	\$527,443	33.15%	\$174,865	Uptown Plan
23 24th Street - Mountain Springs Road	\$135,958	\$0	\$135,958	33.15%	\$45,075	Council Objective
24 Riverside Ave - 4th Street to Black Oak Drive	\$7,219,661	\$0	\$7,219,661	33.15%	\$2,393,563	Town Centre-Uptown Plan
25 24th Street - Ysabel Avenue to Riverside Avenue	\$1,000,000	\$0	\$1,000,000	33.15%	\$331,534	Council Objective
26 Railroad Street - 10th Street to 14th Street	\$2,340,988	\$0	\$2,340,988	33.15%	\$776,117	Town Centre Plan
27 4th Street - Pine Street to Riverside - 101 Ramps	\$16,325,665	\$0	\$16,325,665	33.15%	\$5,412,513	Circulation Element
28 Paso Robles Street Off-Ramp	\$4,835,961	\$0	\$4,835,961	33.15%	\$1,603,286	Circulation Element
29 Paso Robles Street	\$302,921	\$0	\$302,921	33.15%	\$100,429	Town Centre Plan
30 Highway 101/46W Interchange (City's Allocation)	\$23,816,000	\$0	\$23,816,000	33.15%	\$7,895,814	Circulation Element
31 Theatre Drive to South City Limits	\$2,050,400	\$0	\$2,050,400	33.15%	\$679,777	Circulation Element
32 Bike Master Plan Facilities	\$16,973,000	\$0	\$16,973,000	33.15%	\$5,627,127	Circulation Element
SPECIFIC PLAN FACILITIES						
33 Airport Road - Union Road to Linne Road	\$4,363,192	\$0	\$4,363,192	33.15%	\$1,446,547	Circulation Element
34 Chandler East - West Road	\$384,137	\$0	\$384,137	33.15%	\$127,355	Circulation Element
35 Airport Road - Meadowlark Road to Creston Road	\$1,500,000	\$0	\$1,500,000	33.15%	\$497,301	Circulation Element
Transportation Facilities Revenues/Grants Allocated to Existing						
36 Development	NA	\$ (13,460,227)	(\$13,460,227)	0.00%	\$0	NA
TOTAL - TRANSPORTATION FACILITIES	\$254,039,049	(\$13,460,227)	\$240,578,822	35.01%	\$84,222,588	

Development Impact Fees / Project Needs List



2015 Impact Fee Schedule

Development Impact Fees Summary - - Resolution 14-035 Exhibit "A" July 1, 2015

Construction Type	Transportation	Police	Fire	General Governmental	Park and Recreation	Library	Total
Single Family - Resolution	\$ 12,183	\$ 77	\$ 1,054	\$ 3,053	\$ 2,985	\$ 985	\$ 20,337
Multiple Family - Resolution	\$ 8,396	\$ 91	\$ 1,054	\$ 3,053	\$ 2,985	\$ 985	\$ 16,564
Commercial Lodging Motel/Hotel	\$ 2,699	\$ 92	\$ 435	\$ 91	No Fee	No Fee	\$ 3,317
RV Parks & Campgrounds	\$ 2,251	\$ 92	\$ 435	\$ 91	No Fee	No Fee	\$ 2,869
Commercial per sq. ft.	\$ 11.01	\$ 0.12	\$ 0.39	\$ 1.11	NA	NA	\$ 12.63
Industrial per sq. ft.	\$ 3.09	\$ 0.03	\$ 0.21	\$ 0.61	NA	NA	\$ 3.94

Housing Constraints and Opportunities Committee Review

\$83,000,000 in DIF Projects in NE Quadrant



Facility Name	Facilities Costs to City	
	(1)	(2)
A. TRANSPORTATION FACILITIES		
NORTHEAST AIRPORT AREA SERVING FACILITIES		
1 Connection Road 46E to Airport Road, bridge over Huer Huero Road	\$25,005,917	\$0
2 Union Road - Highway 46E Interchange	\$30,000,000	\$0
3 Airport Road - Dry Creek Road Roundabout	\$2,976,962	\$0
4 Dry Creek Road - Airport Road to Aerotech Center Way	\$7,728,241	\$0
5 Huer Huero Bridge Dry Creek Road to Golden Hill Road	\$18,411,076	\$0

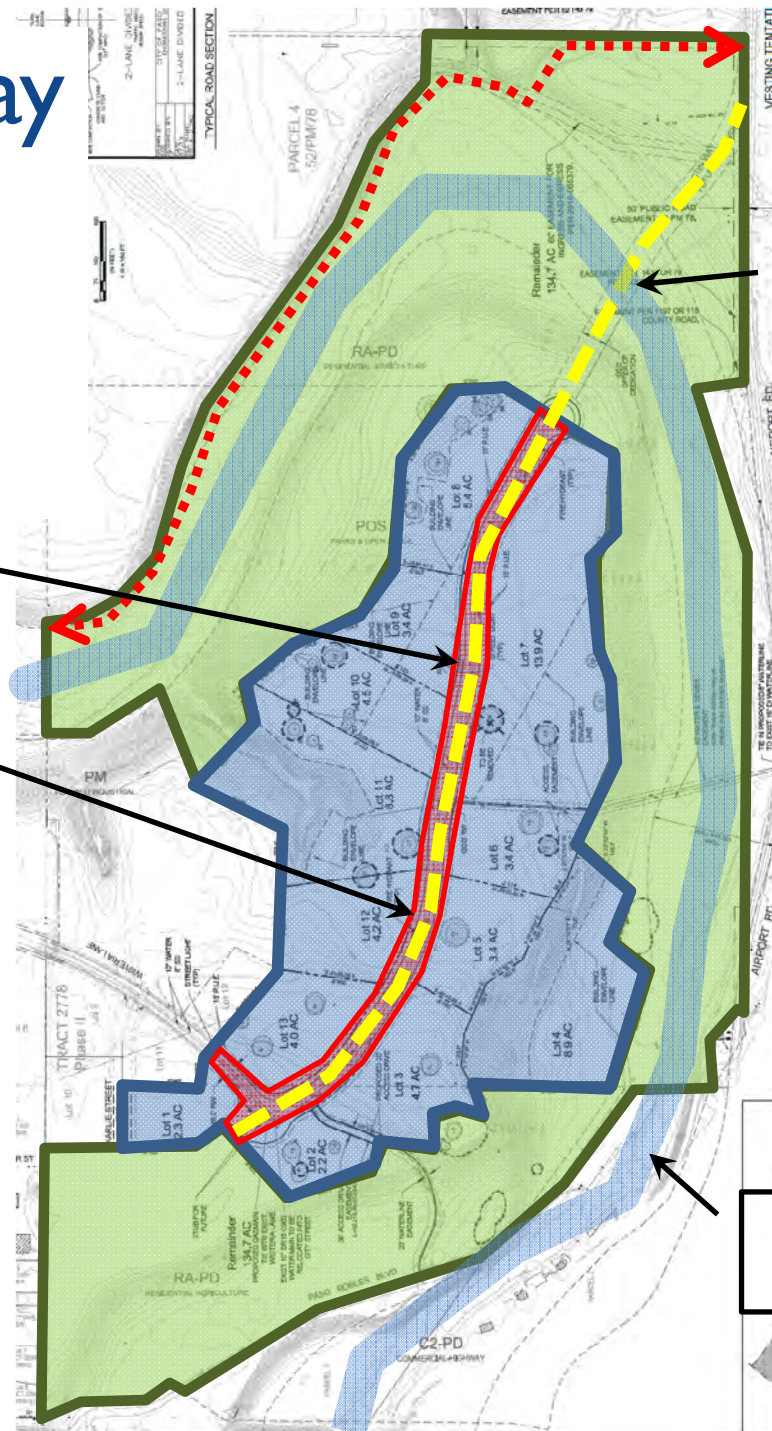
Handwritten notes: "Add 11 segments" and "FRED" with an arrow pointing to the \$25,005,917 value.

46 WEST FACILITIES

Erskine Parkway Dedication / Improvements

Connector Road
right-of-way

Street
Improvements

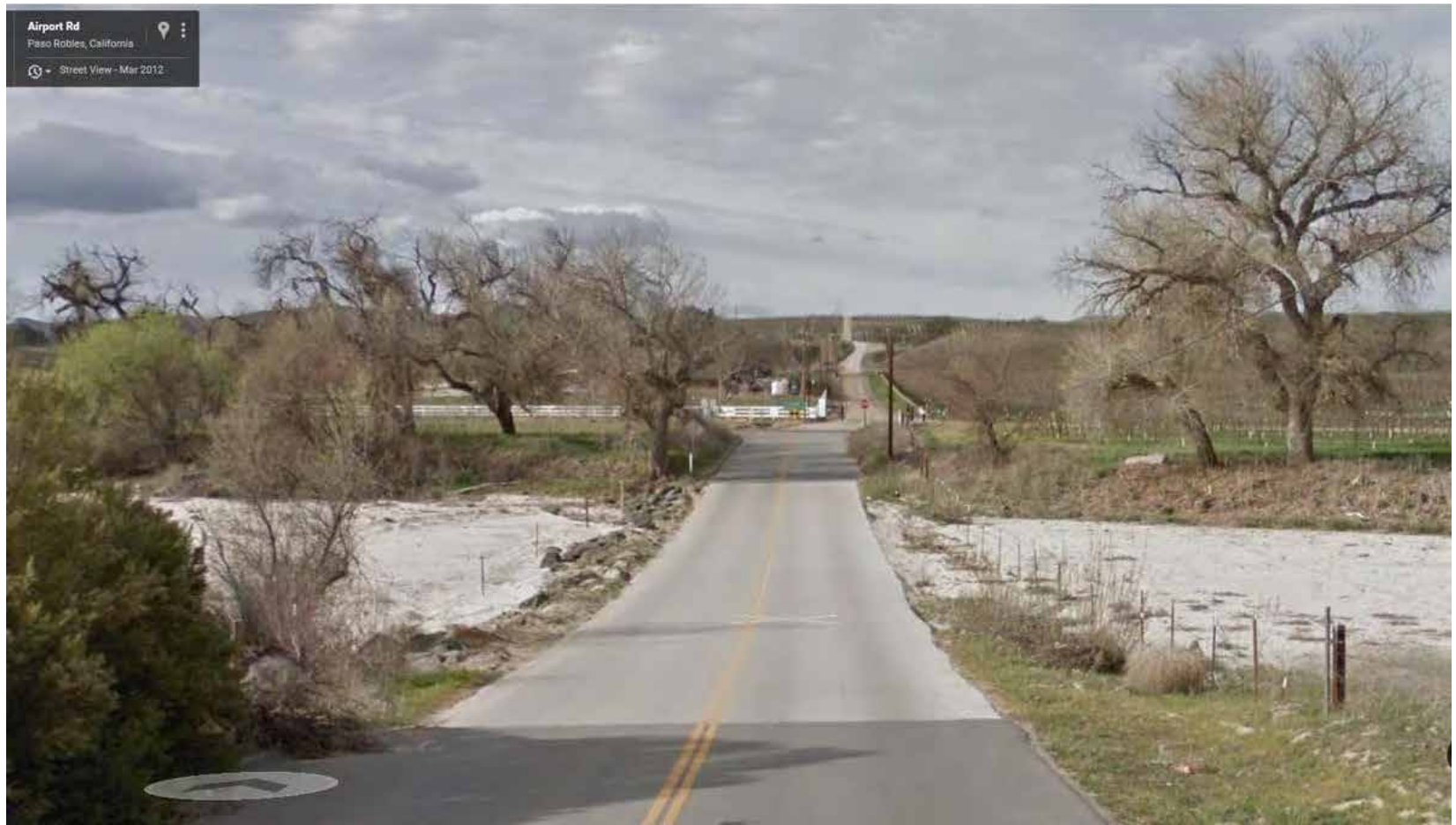


Future Creek
Crossing -
City Project

Huer Huero
Creek

Arizona Crossing Option

- Must be least damaging alternative



Golden Hill Bridge / Dry Creek Connection option

- \$18,000,000 project – 750± daily trips





Possible Next Steps

1. Circulation Element Amendment
2. Revised Project Needs List
3. Updated Cost Estimates
4. New Development Impact Fees



Public Comments



Council Discussion and Direction

