



# Council Agenda Report

**From:** Freda Berman, Maintenance Superintendent  
**Subject:** Lower Playground Replacement at Barney Schwartz Park  
**Date:** January 17, 2017

---

## Facts

1. Since its dedication in 2002, thousands of families have enjoyed the amenities at Barney Schwartz Park (BSP) – two playgrounds, a lake, sports fields, BBQ pavilions and concession stands.
2. The lower playground has been heavily used on a daily basis over the past 15 years and suffers from worn out play features and weather-caused deterioration.
3. REC Foundation, through its Dale Schwartz Memorial Endowment Fund for Barney Schwartz Park, has voted to fund replacement of the lower playground. The non-profit foundation has previously funded a BBQ pavilion, shade structures, trail mile markers, lighting maintenance, parking lot paving and other needed projects at BSP. The group is a key supporter of community-wide recreation efforts including the replacement of the City Park playground, Centennial Pool reopening, Salinas River Corridor, Sherwood Park playground, Sherwood Dog Park, Municipal Pool and Centennial Pool shade structures and many more recreation-enhancing projects in Paso Robles.
4. City staff contacted Landscape Structures to design a new playground in the existing lower playground space. Successful, engaging, durable playgrounds supplied by Landscape Structures are in three other City parks – Sherwood Forest, Uptown Family Park and City Park.
5. The play equipment design was approved and color scheme selected by REC Foundation in November 2016. The City's Parks and Recreation Advisory Committee endorsed the new playground at their meeting on December 12, 2016.
6. Next steps include finalizing design, preparing construction documents and advertising the project for bid. Bids will be brought to City Council for award prior to construction. The goal is to have the replacement playground installed by Summer 2017.

## Options

1. Do nothing;
2. Endorse the design of the new lower playground at Barney Schwartz Park prior to finalizing the project for bid.
3. Direct staff to pursue a different approach.

## Analysis and Conclusions

The lower playground at Barney Schwartz Park is in poor condition and requires replacement. REC Foundation has voted the project a priority to be funded through their Dale Schwartz Memorial Endowment Fund for Barney Schwartz Park. Landscape Structures designed a playground which fits inside the existing playground footprint and requires the least amount of disruption to the surrounding park area. Moreover, Landscape Structures has supplied the playgrounds in three other City parks, allowing for maintenance efficiencies.

City Purchasing Policy encourages participation in cooperative purchasing endeavors in order to receive the benefits of lower pricing. Purchasing the playground equipment through Landscape Structures allows the City to take advantage of low HGACBuy pricing, a competitive procurement process serving local governments.

## Fiscal Impact

The City will not experience any financial impact as a result of this project.

The Barney Schwartz Park Lower Playground replacement project including materials and labor is estimated to cost, with all contingencies, approximately \$250,000. This amount is within the total funds authorized by REC Foundation.

**Recommendation**

Endorse the design of the new lower playground at Barney Schwartz Park prior to finalizing the project for bid.

**Attachments**

1. Playground – ages 5-12
2. Playground – ages 2-5
3. Lower Playground layout

# Barney Schwartz Park

Paso Robles, CA November 18, 2016 71877-1-4-1



©2016 Landscape Structures. All Rights Reserved.

\*Custom products are shown as conceptual only. \*Custom product manufacturing time for this project will be approximately 4 weeks from the time of LSI order acceptance.

landscape structures®



Better playgrounds.  
Better world.®

[playisi.com](http://playisi.com)

Proudly presented by:

Carolynn Jones



# Barney Schwartz Park

Paso Poblés, CA November 18, 2016 71877-1-4-2



Agenda Item No. 6

Page 96

OC Agenda 1-17-17

\*Custom products are shown as conceptual only. \*Custom product manufacturing time for this project will be approximately 4 weeks from the time of LSI order acceptance.

©2016 Landscape Structures. All Rights Reserved.



**Better playgrounds.  
Better world.®**

[playisi.com](http://playisi.com)

Proudly presented by:

Carolynn Jones



# Barney Schwartz Park

Paso Pables, CA November 18, 2016 71877-1-4-3



©2016 Landscape Structures. All Rights Reserved.

\*Custom products are shown as conceptual only. \*Custom product manufacturing time for this project will be approximately 4 weeks from the time of LSI order acceptance.

landscape structures®



Better playgrounds.  
Better world.®

playisi.com

Proudly presented by:

Carolynn Jones





# Barney Schwartz Park

Paso Poblés, CA November 18, 2016 71877-1-4-4



\*Custom products are shown as conceptual only. \*Custom product manufacturing time for this project will be approximately 4 weeks from the time of LSI order acceptance.

©2016 Landscape Structures. All Rights Reserved.



**Better playgrounds.  
Better world.®**

[playisi.com](http://playisi.com)

Proudly presented by:

Carolynn Jones





IT IS THE MANUFACTURERS OPINION AND INTENT THAT THE USE AND LAYOUT OF THESE COMPONENTS CONFORM WITH THE AMERICAN SOCIETY FOR TESTING AND MATERIALS (ASTM) STANDARD ASTM F1487

THIS PLAY AREA & EQUIPMENT IS DESIGNED FOR AGES 2-12 YEARS UNLESS OTHERWISE NOTED ON PLAN.

IT IS THE MANUFACTURERS OPINION THAT THIS PLAY AREA DOES CONFORM TO THE A.D.A. ACCESSIBILITY STANDARDS, ASSUMING AN ACCESSIBLE PROTECTIVE SURFACING IS PROVIDED, AS INDICATED, OR WITHIN THE ENTIRE USE ZONE.

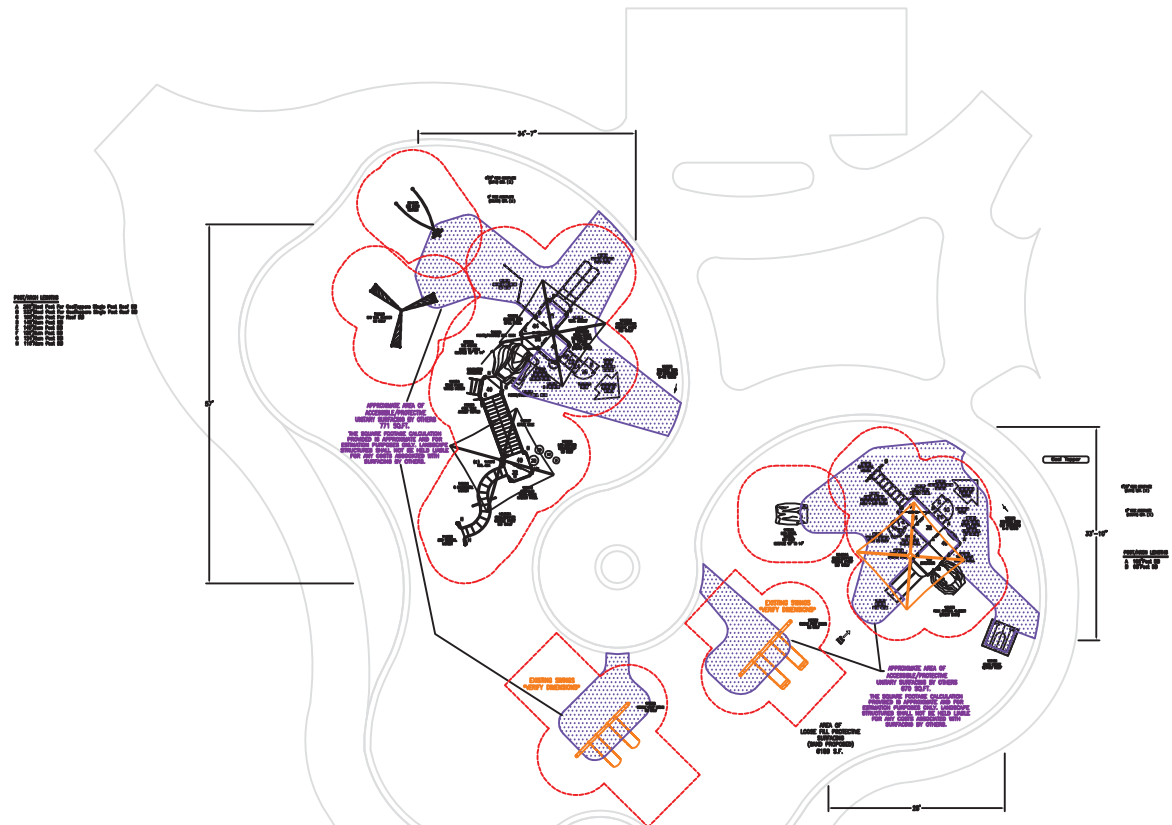
THIS CONCEPTUAL PLAN WAS BASED ON INFORMATION AVAILABLE TO US. PRIOR TO CONSTRUCTION, DETAILED SITE INFORMATION INCLUDING SITE DIMENSIONS, TOPOGRAPHY, EXISTING UTILITIES, SOIL CONDITIONS, AND DRAINAGE SOLUTIONS SHOULD BE OBTAINED, EVALUATED, & UTILIZED IN THE FINAL DESIGN. PLEASE VERIFY ALL DIMENSIONS OF PLAY AREA, SIZE, ORIENTATION, AND LOCATION OF ALL EXISTING UTILITIES, EQUIPMENT, AND SITE FURNISHINGS PRIOR TO ORDERING. SLIDES SHOULD NOT FACE THE HOT AFTERNOON SUN.

CHOOSE A PROTECTIVE SURFACING MATERIAL THAT HAS A CRITICAL HEIGHT VALUE TO MEET THE MAXIMUM FALL HEIGHT FOR THE EQUIPMENT (REF: ASTM F1487 STANDARD CONSUMER SAFETY PERFORMANCE SPECIFICATION FOR PLAYGROUND EQUIPMENT FOR PUBLIC USE, SECTION 8 CURRENT REVISION).

DESIGNED BY:

PT  
 COPYRIGHT: 11/11/13  
 LANDSCAPE STRUCTURES, INC.  
 401 7th STREET SOUTH - P.O. BOX 188  
 DELAND, MINNESOTA 55328  
 Ph: 1-800-358-0030 Fax: 1-763-872-0081

11/11/13	71877-1-2	PT
11/11/13	71877-1-1	NKH
Date	Previous Drawing #	Initials



Estimated manufacturing time  
 based on the  
 time of 18 other equipment.

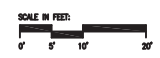
NOTE: THE COOLTOPPER SINGLE POST IS NOT IPEMA CERTIFIED.

PlayBooster®  
 (5-12 years)

TOTAL ELEVATED PLAY COMPONENTS	8		
TOTAL ELEVATED COMPONENTS ACCESSIBLE BY RAMP	0	REQUIRED	0
TOTAL ELEVATED COMPONENTS ACCESSIBLE BY TRANSFER	4	REQUIRED	4
TOTAL ACCESSIBLE GROUND LEVEL COMPONENTS SHOWN	4	REQUIRED	3
TOTAL DIFFERENT TYPES OF GROUND LEVEL COMPONENTS	4	REQUIRED	4

PlayShaper®  
 (2-5 years)

TOTAL ELEVATED PLAY COMPONENTS	5		
TOTAL ELEVATED COMPONENTS ACCESSIBLE BY RAMP	0	REQUIRED	0
TOTAL ELEVATED COMPONENTS ACCESSIBLE BY TRANSFER	5	REQUIRED	3
TOTAL ACCESSIBLE GROUND LEVEL COMPONENTS SHOWN	5	REQUIRED	2
TOTAL DIFFERENT TYPES OF GROUND LEVEL COMPONENTS	4	REQUIRED	4



Barney Schwartz  
 Park  
 Paso Robles, CA

RecWest  
 Outdoor Products, Inc.  
 Joel Shnoski

SYSTEM TYPE:  
 PlayBooster/PlayShaper  
 DRAWING #:  
 71877-1-3

