

TO: James L. App, City Manager
FROM: Doug Monn, Public Works Director
SUBJECT: **Union Road Improvements, Kleck to Montebello Oaks**
DATE: May 7, 2013

NEEDS: For City Council to consider approving the design of Union Road improvements (Kleck to Montebello Oaks).

FACTS:

1. The City received a Bicycle Transportation Grant (BTA) to install bike lanes and improve the surface of Union Road from Kleck to Montebello Oaks.
2. Staff and North Coast Engineering (NCE) presented the final design concepts to the Council Ad Hoc Committee (Strong and Steinbeck).

ANALYSIS & CONCLUSION: NCE is prepared to present the final design concepts to the full City Council for their approval. The project as designed will include:

1. On-street bike lanes on both sides;
2. Sidewalks at the north side;
3. Improved site distance by decreasing the existing "crest";
4. Streetlights;
5. Standard "tee" intersection at Walnut;
6. Waterline relocated from under the sidewalk to under the pavement.

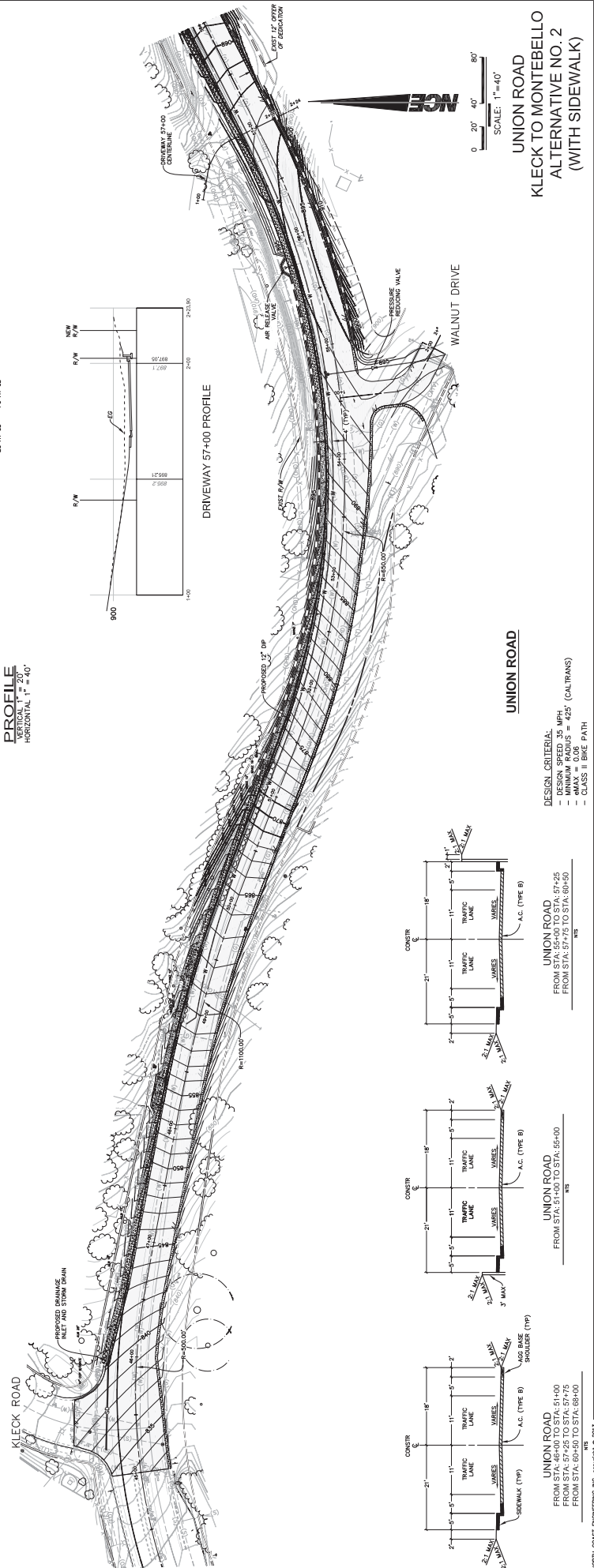
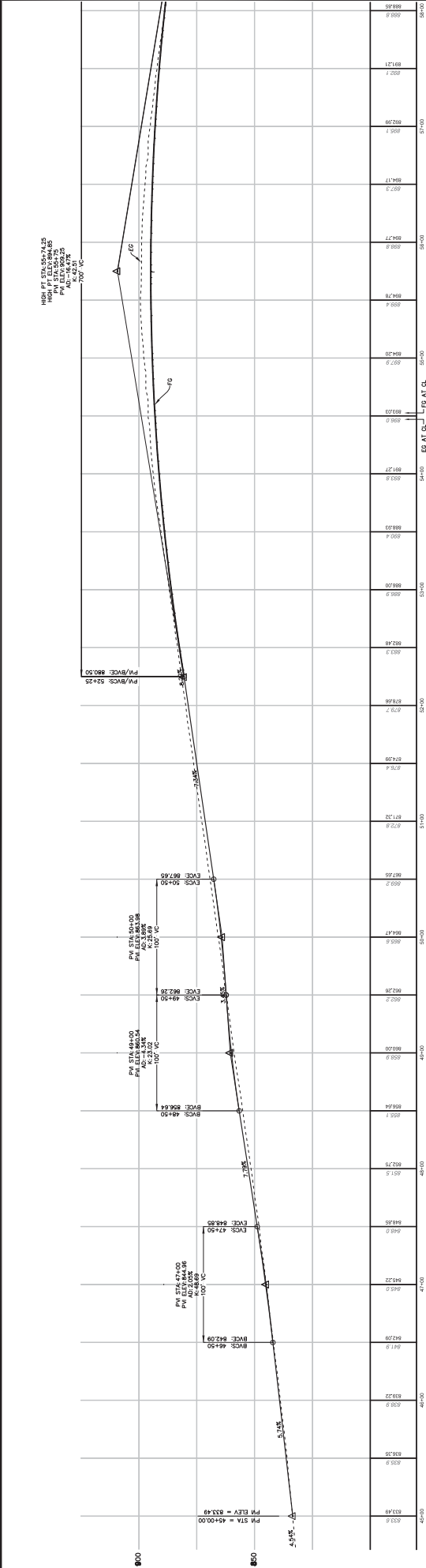
POLICY REFERENCE: Resolution No. 12-088 directing staff to apply for the BTA grant.

FISCAL IMPACT: The BTA grant is \$533,500. The required match of \$150,000 is coming from Union/46 Specific Plan Fees, making the total approved allocation \$683,500. The final design and final cost estimates will be presented to City Council prior to bid advertising for construction.

OPTIONS:

- a. Approve the final design of Union Road (Kleck to Montebello Oaks) as presented and direct staff to
 - (1) schedule an outreach meeting to present the final design to the neighborhood; and
 - (2) prepare final plans, specifications, and cost estimates.
- b. Amend, modify, or reject the above option.

Prepared by: Ditas Esperanza, P.E., Capital Projects Engineer
Attachments: Preliminary design (2 sheets)



UNION ROAD
KLECK TO MONTEBELLO
ALTERNATIVE NO. 2
(WITH SIDEWALK)

DESIGN CRITERIA:
- DESIGN SPEED = 45 MPH
- MINIMUM RADIUS = 425' (CALTRANS)
- MAX = 0.05
- CLASS II BRC PATH

UNION ROAD
FROM STA. 52+00 TO STA. 57+25
FROM STA. 57+75 TO STA. 60+50

UNION ROAD
FROM STA. 45+00 TO STA. 55+00

UNION ROAD
FROM STA. 45+00 TO STA. 51+00
FROM STA. 57+25 TO STA. 57+75
FROM STA. 60+50 TO STA. 69+00

