

TO: James L. App, City Manager
FROM: Julie Dahlen, Interim Director, Library and Recreation Services
SUBJECT: Cooperative Agreement with the National Park Service to Install Interpretive Exhibits along the Anza Trail
DATE: July 19, 2011

Needs: For the City Council to authorize the Director of Library and Recreation Services to enter into a Cooperative Agreement with the National Park Service agreeing to install four Anza Trail interpretive exhibits along the Anza Trail within Paso Robles and to accept a \$7,200 grant to finance the project.

Facts:

1. The City of El Paso de Robles lies along the route of the historic Juan Bautista de Anza National Historic Trail.
2. The City has a publically owned, multi-purpose trail system through the central core of the City along the Salinas River, within the Anza recreational trail corridor.
3. The City has identified trails development and the incorporation of historically significant signage as key components in its vision for the Salinas River and the downtown core.
4. The National Park Service has awarded the City \$7,200 to purchase and install 4 interpretive exhibits in the swath of the Anza Trail which lies within the boundaries of the town center.

Analysis and Conclusion: The existing trail along the Salinas River is used by many residents and visitors, however, there are no references or information available to trail users on the historic aspect of the Anza corridor. By providing interpretive signs on the Anza Trail history, details of the route and its connection through Paso Robles, the historic and cultural significance of the trail will be promoted in the community and to Anza Trail adventurers. The installation of interpretive exhibits is consistent with the City's desire to more fully develop our local trails and the Salinas River Basin.

Policy Reference: **Uptown Town Centre Plan---** The Anza Trail alignment and historical importance is described in this plan for future actions to designate the trail through the City.

Salinas River Vision-- identifies four main themes for river planning: Connections; Conservation; Recreation; and River Economics. The Anza Trail designation was identified in this program as an important feature to pursue under both Connections and Recreation.

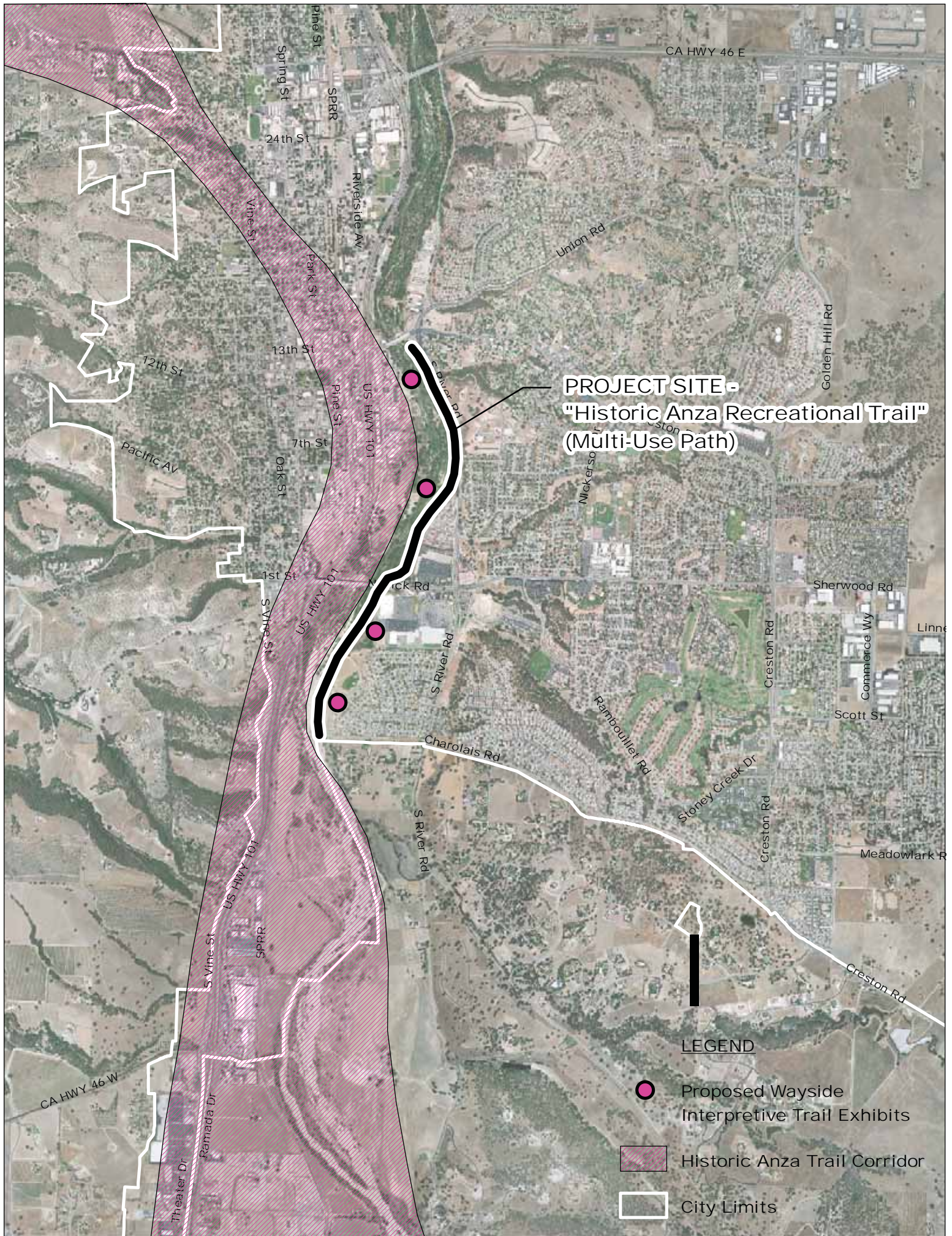
Fiscal Impact: Matching in-kind funds of \$6,200 for labor plus \$1000 from the City's Supplemental Environmental Project (SEP) fund for the Salinas River Corridor Plan. The SEP fund is funded through the City's Public Works Department.

Options:

- a. Authorize the Director of Library and Recreation Services to enter into a Cooperative Agreement with the National Park Service to install Anza Trail interpretive exhibits along the swath of the Anza trail within Paso Robles and to accept a \$7,200 grant to finance 50% of the project.
- b. Amend, modify, or reject the above options.




Attachments:

- Anza Trail sign map
- Examples of interpretive signage

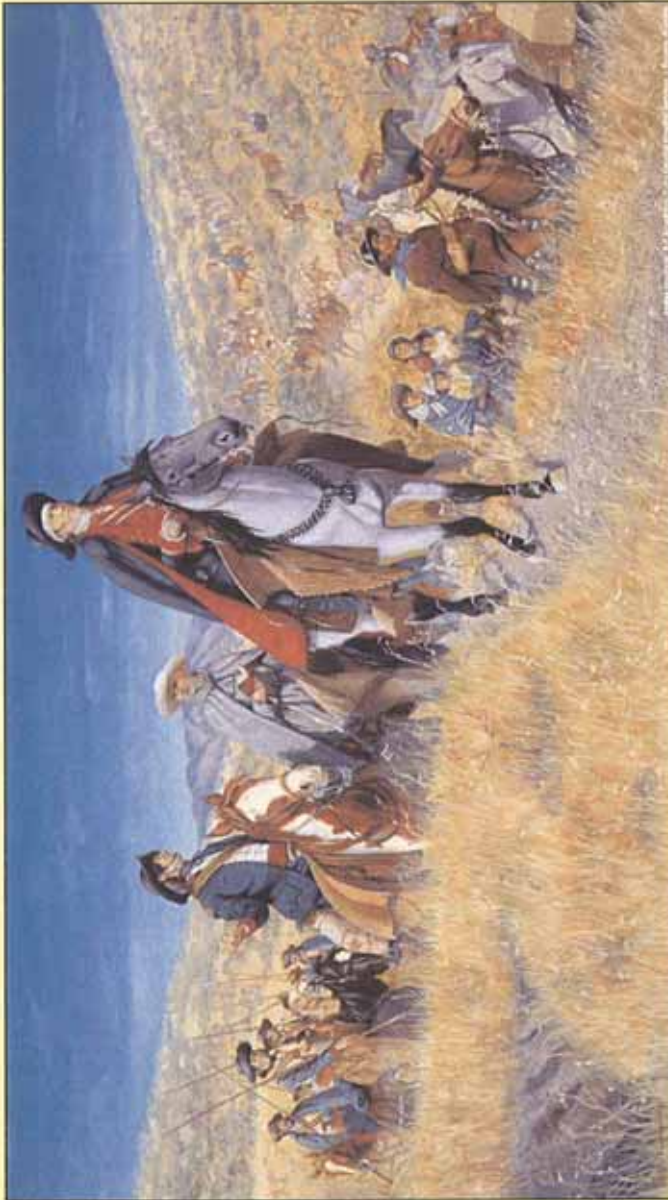


**PROJECT SITE -
"Historic Anza Recreational Trail"
(Multi-Use Path)**

LEGEND

-  Proposed Wayside Interpretive Trail Exhibits
-  Historic Anza Trail Corridor
-  City Limits

Juan Bautista de Anza National Historic Trail



Something Better on the Horizon
 What would make a family leave their home for an uninhabited land on a distant frontier? For the nearly 300 men, women, and children on the Anza expedition, it was the chance for a fresh start. Life in northern Mexico in 1775 was hard. They hoped for a better life with more opportunities along the San Francisco Bay.

A New Life on the Edge of the Empire
 Commander Juan Bautista de Anza understood the needs of these families as well as those of the Spanish Crown. By offering to lead them north to the temperate grasslands of the San Francisco Bay, he knew that these families would help build the forts and communities that would protect California from foreign invasion.

For six months, Anza led the expedition through the deserts and mountains of northern Mexico to California. The occasional birth and encounters with native communities provided welcome changes from daily hard work.

Creating a New California
 The arrival of the families in San Francisco in 1776 set in motion tremendous changes. Within a year, they had built a presidio and established small farms. Soon, their children were raising their own families in California, helping to build new communities. These families would transform the west, helping to create a better life for themselves while preparing the way for new waves of immigrants.



The Anza Trail linked the small pueblos of northern Mexico with the California missions, creating a crucial supply route and a means for future immigration.

Juan Bautista de Anza National Historic Trail

Congress established Juan Bautista de Anza National Historic Trail in 1990 to commemorate Anza's legacy and the story of this first overland expedition to arid California.

Today, the National Park Service works to share the Anza Trail story by linking the various cultural and historical sites associated with Anza and establishing a continuous public use trail along the historical route.

Contact staff at this site to receive more information about the Anza Trail and ways to enjoy it.

The Park Service depends on the efforts of other land management agencies, local governments, and hundreds of volunteers to bring this story alive. To find out how you can help, visit the trail at www.nps.gov/jaba.

Exploring the Anza Trail Today

By Horse

Horses were crucial to Anza's success and are still on the trail today. In the California deserts, equestrians can ride through Anza Borrego Desert State Park, near the San Francisco Bay, the Delta de Anza trail offers nearly 20-miles of trail, and in Tucson, riders can follow dozens of miles of equestrian trail.

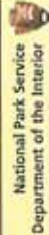


On Foot

Over 300 miles of recreational trail follow the Anza route with additional segments added every year. Hikers and bikers can travel the route along the Los Angeles River and see a hint of what life was like two centuries ago. In Tucson, the trail is a multi-use corridor that connects the downtown with numerous parks along the Santa Cruz River. In San Francisco, the final leg of the trail gives hikers a panoramic view of the Golden Gate and the San Francisco Bay.

By Car

From the international border in Nogales, Arizona to San Francisco, California, drivers can follow the route used by the Anza expedition. Much of the Anza Trail eventually became the major highways that connect communities today. Drivers can follow the distinctive trail markers as they make their way along the route used by the expedition.



The National Park Service cares for the places saved by the American people so that all may experience our heritage.



Western end of the 1825
Erie Canal in Buffalo

1 Significant Landscape Feature

What intangible meanings are associated with this specific terrain? What is the unique significance of this place and why should someone care? Within the first three-second glance at a wayside, visitors should see a connection to the landscape. Some landscapes have obvious features (*above*). More subtle landscapes (*below*) require graphics that direct viewers' attention to things less obvious.



Pea Ridge
National Military Park

2 Site-Specific Graphics

Finding or developing compelling, site-specific graphics that tell the story is key to a successful wayside exhibit. Historic images placed on the landscape where the original photographer stood make a powerful and immediate connection for visitors. When photos are lacking, illustrations like the one shown above can tell the story.

Common Sizes

The following examples are common panel sizes. Choose panel sizes based on graphic and written content, and location. Be consistent in size and shape throughout a site or park.

The low-profile angle is 45 degrees



42 x 24 This size is appropriate for high-quality panoramic images, main text of no more than 100 words, stories with side-bar or secondary graphics and captions or longer quotes, and for bilingual waysides.



36 x 24 This is the most common size. It has room for a large graphic, 75-100 words of main text, small inset graphics, and short captions or labels.



24 x 24 This size works well when there is a single simple graphic with 75 words of text and one or two short captions or labels.



6 x 12



Trailside exhibits are low to the ground and most often used as identification panels for plants or architectural features. They require a single simple graphic, short title, and 25 words of text.



AMIGOS DE ANZA/SAN LUIS OBISPO COUNTY CHAPTER
P.O. Box 3734
Paso Robles, CA 93447-3734
lhfinhorse@yahoo.com

November 23, 2010

National Park Service
U.S. Department of the Interior
Juan Bautista de Anza National Historic Trail

In re: Anza NHT Cost Share Project Application – FY 2011 – City of Paso Robles

The City of Paso Robles is applying to be included in the NHT Cost Share Project. Amigos share the vision that the Anza Trail is an exciting part of the history of the region and of Paso Robles in particular. The Salinas River corridor development plan embraces the Anza Trail as a spotlight to an exciting time in local history. Interpretive signage helps users of the trail use their imagination so that they can put themselves in the place of colonists. History “comes alive”! Connecting trail to this and other networks throughout the county has been an expressed wish from the public and shareholder meetings.

We strongly support a project that provides signage, connectivity and an interpretive site along any portion of existing trail or park that will promote and educate as to the significance of the Anza Expedition.

Sincerely,

Lydia Francis, co-chair
Amigos de ANZA/SLO



NORTH COUNTY TRAILS ASSOCIATION, INC
P.O. Box 3734
Paso Robles, CA 93447-3734
northcountytrails@yahoo.com

November 22, 2010

National Park Service
U.S. Department of the Interior
Juan Bautista de Anza National Historic Trail

In re: Anza NHT Cost Share Project Application – FY 2011 – City of Paso Robles

We are excited to see the City of Paso Robles pursuing this project. Since the Anza Trail is such an important part of the history of the region and of Paso Robles in particular, any program that augments understanding and exposure to the historic journey is vital to furthering construction of the trail. The City of Paso Robles has included the Anza Trail as an important focus for the future development plan and for the Salinas River corridor.

We strongly support a project that provides signage, connectivity and an interpretive site along any portion of existing trail or park that will promote and educate as to the significance of the Anza Expedition.

Respectfully submitted.

North County Trails Association, Inc
Kathe Hustace, Secretary

San Luis Obispo Council of Governments



Regional Transportation Planning Agency
Metropolitan Planning Organization
Census Data Affiliate/ Rideshare Program
Service Authority for Freeways and Expressways

Arroyo Grande
Atascadero
Grover Beach
Morro Bay
Paso Robles
Pismo Beach
San Luis Obispo
San Luis Obispo County

Ronald De Carli, Executive Director

November 22, 2010

Susan De Carli, Planning Manager
City of Paso Robles
1000 Spring Street
Paso Robles, CA 93446

Dear Ms. De Carli,

Thank you for the opportunity to support the City of Paso Robles' effort to secure funding through for Anza National Historic Trail Cost Share program. SLOCOG strongly supports raising the visibility of the Anza trail in San Luis Obispo County and in Paso Robles particularly, by securing funds through this grant program.

San Luis Obispo Council of Governments (SLOCOG) is the Regional Transportation Planning Agency; and in this capacity SLOCOG plans, supports, and funds projects of regional significance for all transportation modes. SLOCOG's 2010 Regional Transportation Plan recognizes the regional and recreational importance of the Juan Bautista de Anza Trail Corridor, which runs the length of San Luis Obispo County. The corridor is referenced specifically in Non-Motorized Policy 6 (NM-6.), which says, "*Encourage the development of [various types of trail] that travel through and connect to scenic areas or other recreation destinations in both the Coastal Trail and Anza Trail Corridors; encourage joint projects with Santa Barbara and Monterey Counties and State and National Parks to provide bikeways linking the two areas.*" The 2010 RTP promotes a study of the Anza Trail in the north county (referred to as the Salinas River Trail); with intent to identify future potential trail easements, alignments, opportunities, constraints, and develop an improvement plan.

In addition to these references in the Regional Transportation Plan, SLOCOG has also funded two segments of the South River Road Bike and Pedestrian path, which is within the Anza Trail Corridor, and will be ready for construction within the next calendar year.

We support the City's efforts, through this program, to install Anza Trail markers along a segment of trail that runs within the Anza Trail corridor and along the Salinas River Trail, both of which are regionally significant trails recognized in SLOCOG's Regional Transportation Plan (RTP). Concurrently the City will be seeking Anza Recreational Trail Certification for the trail segment within the City limits.

SLOCOG supports the City's efforts to designate and promote the nationally and regionally significant trail corridor within the City limits. We look forward to working with the City to designate this segment as well as identify and plan segments of this trail the full length of the region. If you have any questions, please do not hesitate to call me at 805-781-5754, or contact Jessica Berry at 805-781-5754.

Sincerely,

Richard Murphy
Programming and Project Delivery Manager

RESOLUTION NO. 11-xxx

A RESOLUTION OF THE CITY COUNCIL OF THE CITY OF EL PASO DE ROBLES
AUTHORIZING THE DIRECTOR OF LIBRARY AND RECREATION SERVICES TO ENTER
INTO A COOPERATIVE AGREEMENT WITH THE NATIONAL PARK SERVICE TO INSTALL
INTERPRETIVE EXHIBITS ALONG THE ANZA TRAIL AND TO ACCEPT A \$7,200 GRANT

WHEREAS, the City of El Paso de Robles lies along the route of the historic Juan Bautista de Anza National Historic Trail; AND

WHEREAS, the City has a publically owned, multi-purpose trail system through the central core of the City along the Salinas River, within the Anza recreational trail corridor; AND

WHEREAS, the City has identified trails development and the incorporation of historically significant signage as key components in its vision for the Salinas River and the downtown core; AND

WHEREAS, the National Park Service has awarded the City \$7,200 to purchase and install 4 interpretive exhibits in the swath of the Anza Trail which lies within the boundaries of the town center;

NOW, THEREFORE, BE IT RESOLVED, the City of El Paso De Robles (City) hereby authorizes the Director of Library and Recreation Services to enter into a cooperative agreement with the National Park Service to install interpretive exhibits along the swath of the Anza Trail and to accept a \$7,200 grant to finance 50% of the project.

PASSED AND ADOPTED by the City Council of the City of El Paso De Robles this 19th day of July 2011.

I, the undersigned, hereby certify that the foregoing resolution was duly adopted by the City Council of the City of El Paso De Robles by the following roll call vote:

AYES:
NOES:
ABSTAIN:
ABSENT:

Duane Picanco, Mayor

ATTEST:

Caryn Jackson, Deputy City Clerk