

TO: Jim App, City Manager

FROM: Doug Monn, Director of Public Works

SUBJECT: Oak Tree Removal Intersection of River and Creston Roads

DATE: October 19, 2010

Needs: For the City Council to consider authorizing removal of one Valley Oak at the intersection of River and Creston Roads.

- Facts:**
1. The tree in question, a 36 inch diameter Valley Oak (*Quercus Lobata*), is located at the northeast corner of the River and Creston Roads intersection.
 2. The tree is in a severe state of decline and is demonstrating a significant risk to City property including but not limited to: street lights, traffic signals and utility lines.
 3. A&T Arborists prepared an Arborist Report along with a hazard evaluation of the tree (Attachment 1). The report indicates that the tree retains only 10% of a live canopy and concludes that the tree should be removed.

**Analysis
And**

Conclusion: According to the adopted Oak tree Ordinance Section 10.01.050.D, there are several factors that the City Council must review when considering the removal of an existing Oak tree.

1. *The condition of the oak tree with respect to its general health, status as a public nuisance, danger of falling, proximity to existing or proposed structures, interference with utility services, and its status as host for a plant, pest or disease endangering other species of trees or plants with infection or infestation;*

The A&T Arborist report submitted August 27, 2010 recommends removal due to extensive decay which makes the tree prone to falling. If the tree should fall it could potentially impact nearby utility lines, street lights and nearby traffic signal devices.

2. *According to Section 10.01.050.D, consider the topography of land, and the potential effect of the requested tree removal on soil retention, water retention, and diversion or increased flow of surface waters. The director shall consider how either the preservation or removal of the oak tree(s) would relate to grading and drainage. Except as specifically authorized by the planning commission and city council, ravines, stream beds and other natural water-courses that provide a habitat for oak trees shall not be disturbed;*

The removal of this tree would not result in negative effects on soil retention, water retention or surface water flows for the surrounding area or adjacent drainage systems.

3. *Employ good forestry practices such as, but not limited to, the number of healthy trees the subject parcel of land will support.*

As described above there would be sufficient area to plant required replacement trees in the area vacated by the tree removal.

The Oak Tree ordinance requires planting of replacement Oak trees equal to 25% of the trunk diameter of the tree being removed. The existing tree is 36-inches in diameter therefore; 9-1.5 inch diameter replacement trees are required.

Policy

Reference: Paso Robles Municipal Code Section 10.01.010 (Oak Tree Ordinance)

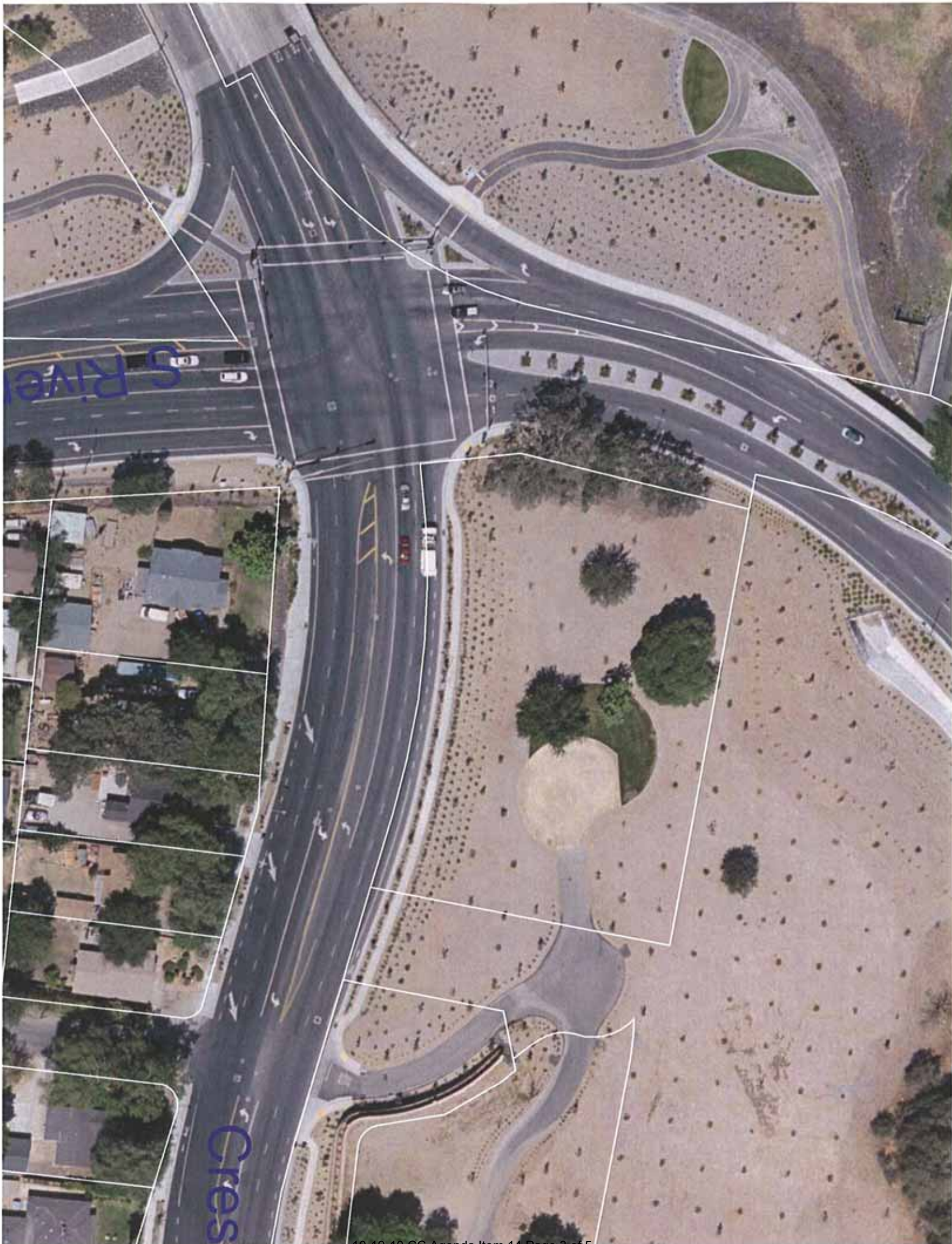
Fiscal

Impact: Estimated cost of removal is \$3,600. The funds will come from Fund number 100-310-5221-290 Street Trees, medians and planter maintenance.

- Options:**
- A. Adopt Resolution 10-XX, authorizing the removal of the 36-inch Valley Oak (*Quercus Lobata*), and require planting of (9) 1.5-inch diameter Valley Oak replacement trees.
 - B. Amend, modify or reject the above options.

Attachments:

1. Site Plan – tree location map
2. Photos of tree.
3. Arborist Report, dated August 27 2010.
4. Resolution





A & T ARBORISTS

P.O. BOX 1311 TEMPLETON, CA 93465 (805) 434-0131



8-27-10

Charles Lorenzen
Streets Division Manager
City of Paso Robles

This report is in regard to the dying 30" diameter valley oak tree (*Quercus lobata*) owned by the City of Paso Robles that is located at the corner of North River Road and Creston Roads. The tree has been in decline for several years and currently retains approximately 10% live canopy. As the main scaffold limbs continue to decay, there is a strong possibility of failure onto North River Road. This could be a hazard to both pedestrians and vehicular traffic. Failures may range from small branches up to half of the entire tree.

Included is a photograph that was taken from the east side of the tree that illustrates the dead portion.

There are two options regarding this tree. First would be to remove the dead portion and leave the remaining live portion. Due to the fact the tree has continued to decline, the remaining portion that would be left may soon die let alone the fact the tree will appear severely disfigured. Second option is to remove the entire tree. We prefer this alternative as the tree will most likely be completely dead in the future.

We strongly recommend immediate action before a failure happens. Please feel free to contact us if there are any questions.

Chip Tamagni
Certified Arborist #WE 6436-A

A handwritten signature in black ink, appearing to read "Steven G. Alvarez".

Steven G. Alvarez
Certified Arborist #WE0511-A