

**TO:** James L. App, City Manager  
**FROM:** Ron Whisenand, Community Development Director  
**SUBJECT:** Acceptance of Parcel Map 05-0240 for Recordation (Holman)  
**DATE:** September 1, 2009

---

**Needs:** That the City Council consider steps toward finalizing development plans for a residential development and subdivision.

**Facts:** 1. Applicant Steve Holman has requested that Parcel Map PR 05-0240 be accepted by the City for recordation. Parcel Map PR 05-0240 is located at the southwest corner of 19<sup>th</sup> and Pine Streets.

**Analysis  
and**

**Conclusion:** Parcel Map PR 05-0240 was tentatively approved by the Planning Commission on January 10, 2006. All conditions imposed by the Planning Commission have been satisfied. No annexation to the Community Facilities District will be required since the residential units on the property were permitted prior to Planning Commission approval of the subdivision.

**Policy**

**Reference:** General Plan  
California Government Code Section 66462 (“Subdivision Map Act”)  
Paso Robles Municipal Code Section 22.16.160

**Fiscal**

**Impact:** Residential units on the property were permitted prior to Planning Commission approval of the subdivision, therefore no annexation to the Community Facilities District for public services is required.

**Options:** That the City Council accept the subject map and agreement by taking the following actions:

- a. Adopt Resolution No. 09-xx accepting the recordation of Parcel Map PR 05-0240, a three-lot residential subdivision located at the southwest corner of 19<sup>th</sup> and Pine Streets.
- b. Amend, modify, or reject the above option.

Attachments: (2)

- 1) Vicinity/Reduced size parcel map
- 2) Resolution Final Map



**BASIS OF BEARINGS**  
 THE BASIS OF BEARINGS FOR THIS MAP IS  
 N03°00'00"W BEING THE CENTERLINE OF  
 PINE STREET BETWEEN TWO FOUND  
 MONUMENTS PER 25 RS 47 (R).

**LEGEND:**

- ▲ FOUND CITY WELL MONUMENT AS NOTED
- SET 1/2" REBAR WITH TAG LS 6146
- MEASURED
- SINGLE PROPORTION
- RECORD INFORMATION PER 25 RS 47
- RECORD INFORMATION PER A MB 169



**PARCEL MAP  
 PR 05-0240**

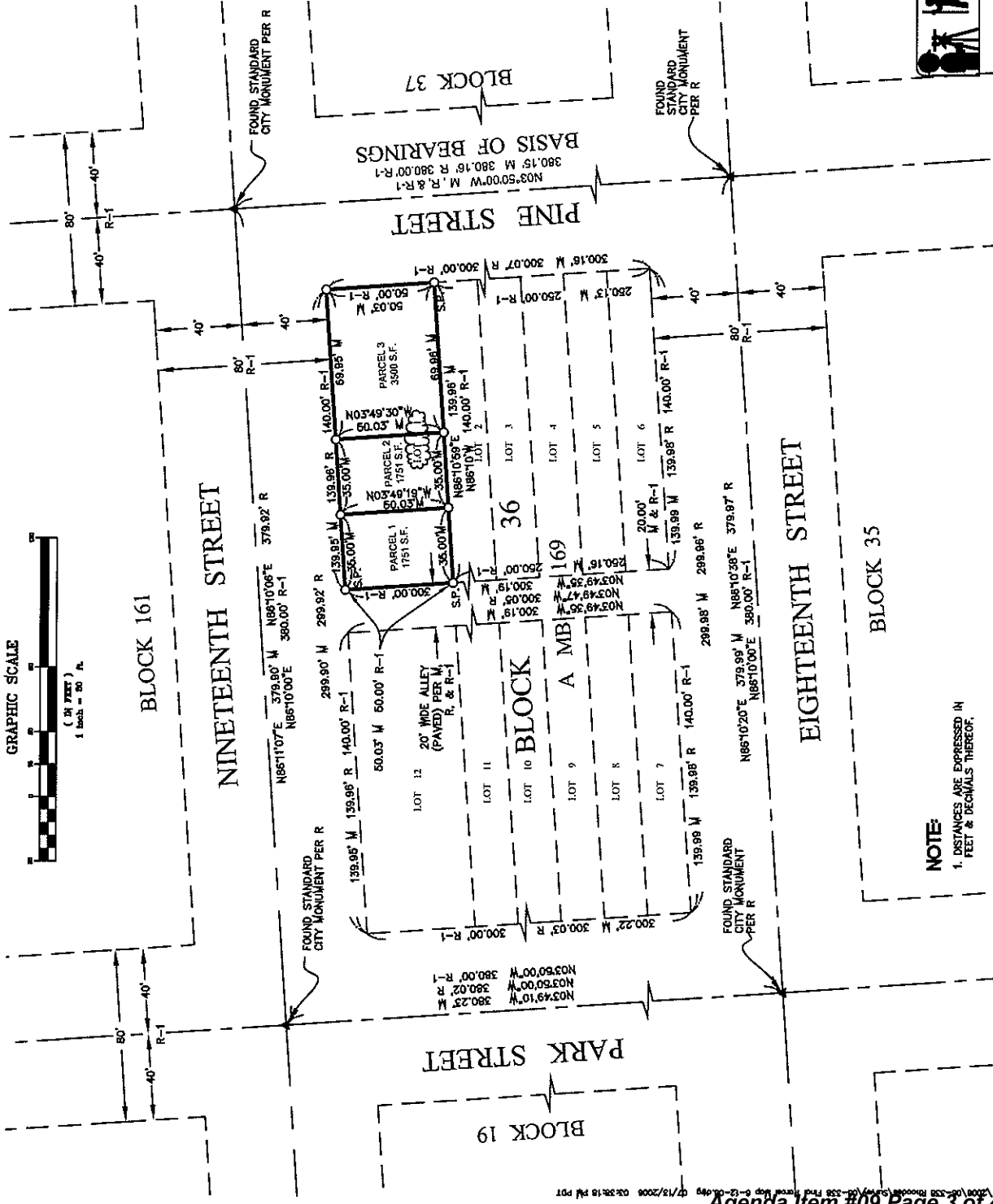
BEING A 3-PARCEL SUBDIVISION OF  
 LOT 1 OF BLOCK 36  
 PER A MB 169,  
 IN THE CITY OF PASO ROBLES  
 SAN LUIS OBISPO COUNTY  
 STATE OF CALIFORNIA



**EMK & ASSOCIATES, INC.**  
 ENGINEERING • PLANNING • SURVEYING  
 1005 RAILROAD ST. PASO ROBLES, CA (805)258-0427

JOB NO. 06-338 SHEET 2 OF 2 SHEETS

**GRAPHIC SCALE**



**NOTE:**

1. DISTANCES ARE EXPRESSED IN FEET & DECIMALS THEREOF.

RESOLUTION NO. 09-

A RESOLUTION OF THE CITY COUNCIL OF THE CITY OF PASO ROBLES  
ACCEPTING PARCEL MAP PR 05-0240 FOR RECORDATION  
(HOLMAN)

---

WHEREAS, the subdivider of tentative Parcel Map PR 05-0240, located at 1729 Park Street, has requested recordation of the final map; and

WHEREAS, the parcel map allows for the creation of three (3) parcels on a 0.16 acre lot; and

WHEREAS, all conditions of approval for this subdivision have been satisfied by the subdivider; and

WHEREAS, City staff has reviewed the final parcel map and finds it to be in substantial conformance with the approved tentative map and technically correct.

THEREFORE, BE IT RESOLVED AS FOLLOWS:

SECTION 1. That the City Council of the City of Paso Robles does hereby approve the final map for Parcel Map PR 05-0240 and authorize the execution and recordation of the parcel map.

PASSED AND ADOPTED by the City Council of the City of Paso Robles this 1<sup>st</sup> day of September, 2009 by the following vote:

AYES:

NOES:

ABSTAIN:

ABSENT:

---

Duane Picanco, Mayor

ATTEST:

---

Cathy M. David, Deputy City Clerk