

TO: JAMES L. APP, CITY MANAGER
FROM: ANN ROBB, LIBRARY & RECREATION SERVICES
SUBJECT: SALINAS RIVER CORRIDOR
DATE: DECEMBER 21, 2004

Needs: For the City Council to formally approve the Salinas River Enhancement Project grant; to approve continuation of the Salinas River “community visioning” process; and to provide direction for the creation and adoption of a Salinas River Corridor Plan as outlined in the General Plan.

Facts:

1. The General Plan established a need to “Create and adopt a Salinas River Corridor Plan to address such issues as recreation, conservation, use, public access, and educational outreach”.
2. In fall, 2003, the City received grant funding from the National Park Service (NPS) to begin exploring options for the Salinas River corridor.
3. The December 2003 earthquake and the loss of NPS funding interrupted this project.
4. In August, 2004, staff from the Upper Salinas Las Tablas Resource Conservation District (RCD) proposed that the city participate in a grant that could be used to enhance public access to and education about the river.
5. The California Resources Agency has indicated support for a project to emphasize public access to the river, and riparian habitat restoration beginning at Larry Moore Park and ending just north of the Niblick Bridge.
6. The proposed project will join existing or planned portions of a multi-use trail, making an uninterrupted trail (1½ miles) between the southern border of the city and the northern end of the new residential development behind Albertson’s (see attachment 2). It will also include a trailhead parking area across from Larry Moore Park and barriers in the park to discourage off-road vehicles accessing the riverbed from this location.

7. This proposed trail will run parallel to a multi-use, paved trail that is already required to be installed by the developer of Phase III of the Woodland Plaza Center and the SLOCOG multi-use trail design that will extend north of the Veteran's Bridge. However, the River Trail will have a focus/emphasis on riparian habitat, historical and conservation education. The purpose of the River Trail is to bring people into the river environment.
8. The Woodland Plaza trail will be funded through private development money. The SLOCOG trail is designed, but currently construction is unfunded. The SLOCOG trail would not qualify for funding under this particular Resource Agency grant because it does not meet the educational and environmental/conservation components.
9. The grant would be awarded to the RCD, not the City of Paso Robles. The amount of the grant is \$363,000 to accomplish the trail's design and construction. The City's participation cost would be equivalent to: a) Environmental permitting costs; b) On-going maintenance (repair and replacement) costs for a 20-year period; and c) "In-kind" contribution of staff time/resources to support the effort. It is anticipated that in-kind resources will involve staff from Library & Recreation Services, Public Works and the City Manager's Office.
10. The window of opportunity to participate in this grant will close at the end of January 2005 when grant participation agreements are due.
11. The Parks and Recreation Advisory Committee and REC. Inc. have submitted letters of support for the project (see attachments 3 and 4).
12. Concurrently, NPS has renewed funding for a broad visioning process (see attachment 5 – letter from Sally Sheridan of the Park Service).
13. NPS proposes to co-host an intensive, 3 day design workshop focusing on publicly owned lands. The result would be an illustrative plan that identifies multi-use recreation trails, access options, and conceptual site designs for the Salinas corridor.
14. On November 15, 2004, the City Council ad hoc committee met to discuss the Salinas River corridor planning efforts and specifically the opportunity to pursue the grant project. The ad hoc committee supported pursuit of the grant, the NPS visioning process, and moving forward towards funding a Salinas Corridor Master Plan in the future.

Analysis
and

Conclusion:

The creation of a long term, comprehensive Salinas River Corridor Plan is called for in the General Plan, and has been established as a high priority City Council goal. Such a plan will address recreation, conservation, use, public access and educational outreach. Co-hosting a public visioning workshop could be a step toward the development of a more comprehensive plan.

In the meantime, the opportunity for a grant funded project has been presented. This project would complete a 1 ½ mile trail at the southern end of the city, offering public access to the river corridor. Participation in this grant is not intended to circumvent or replace the visioning process for the Salinas River Corridor. City Council support is needed for the grant to be successful. Once completed, the project could be used as a model for additional funding opportunities.

The City Council ad hoc committee for the Salinas River Corridor recommends moving forward with the grant, the visioning process and ultimately the creation of a Salinas River Corridor Plan.

Policy

Reference:

General Plan (Adopted 2004)

City Council Goals for Fiscal Years 2004-2007 (Adopted 2/18/03)

Fiscal Impact:

Once complete, routine maintenance of the trail is estimated at \$16,500 annually. Flooding could require additional costs if some or parts of the trail need to be rebuilt. The frequency of anticipated replacement is difficult to estimate, but based on the proximity to the 100-year flood plain, a frequency of once every 25 years appears a safe guideline. It would be advisable to establish a trail replacement fund and appropriate \$15,000 annually.

An estimated one time expenditure of up to \$25,000 for preparation of environmental documentation that is required but not included in grant allocation. With assistance from the RCD, it may be possible to off set environmental costs with additional grants (Note: RCD is already in the process of applying for grants that would accomplish this).

\$7,500 to co-host 3 day workshop with National Park Service.

Cost of developing a long term, comprehensive Salinas River Corridor Plan are unknown, but expected to be significant.

The grant support for this initial phase is \$32,500 (trail environmental at \$25,000 plus \$7,500 for NPS workshop) to be appropriated from General Fund Reserves.

The passage of Proposition 1A benefited the City's General Fund. The revised General Fund projections for fiscal year 2005 reduced the deficit to \$(345,200) for the current fiscal year. However, since July 1, 2004, the Council has approved the following additional General Fund budget appropriations:

General Fund 2005 Deficit	\$345,200
Approved Carry-over Requests	747,700
Local Hazard Mitigation Plan	52,000
Utility Billing Software Upgrade	9,000
FEMA Consultant	100,000
Geo Thermo Study	17,300
Melody Basin/Park	25,000
Salinas River Trail Grant	<u>32,500</u>
 Total YTD	 <u>\$1,263,700</u>

The projected deficit will be paid from General Fund savings (reserves). There are sufficient resources in reserves to cover the deficit.

Additionally, the City is evaluating means to reduce general fund expenditures by approximately \$200,000 annually. New recurring maintenance and replacement costs estimated at \$31,500 starting in fiscal year 2007 will further negatively impact general fund resources.

Options:

Option A - for the City Council to:

1. Adopt the attached resolution 04-XXX that would accomplish the following:
 - a) Authorize the Mayor to send a letter to the Upper Salinas-Las Tablas Resource Conservation District indicating the City's willingness to operate and maintain the trail and habitat enhancements outlined in the grant proposal.
 - b) Authorize city staff to work with National Park Service staff to co-host a design workshop that will produce a broad overall direction for the Salinas River corridor;

- c) Direct city staff to develop a strategy/proposal for creation of a Salinas River Corridor Plan;
- d) Approve the appropriation of \$25,000 to accomplish the up-front environmental work;
- e) Approve the appropriation of \$7,500 to support the Salinas River design/vision workshop.
- f) Authorize staff to establish a budget for routine annual maintenance at \$16,500 beginning July 1, 2006 and create a replacement fund at \$15,000 per year for a total expense of \$31,500 annually.

Option B - Amend, modify, or reject the forgoing options.

Attachments:

1. Resolution 04-XXX authorizing grant participation and action steps
2. River Trail Project Map
3. Parks and Recreation Advisory Committee support letter
4. REC Inc. support letter
5. National Park Service, Sally Sheridan letter of support/funding from NPS
6. River Trail Grant Description and Budget

RESOLUTION NO. 04-

A RESOLUTION OF THE CITY COUNCIL OF THE CITY OF PASO ROBLES
APPROVING GRANT PARTICIPATION AND ACTION STEPS CONCERNING
THE SALINAS RIVER CORRIDOR

WHEREAS, the General Plan established a need to “Create and adopt a Salinas River Corridor Plan to address such issues as recreation, conservation, use, public access, and educational outreach”; and

WHEREAS, in fall, 2003, the City received grant funding from the National Park Service (NPS) to begin exploring options for the Salinas River corridor; and

WHEREAS, the December 2003 earthquake and the loss of NPS funding interrupted this project; and

WHEREAS, in August, 2004, staff from the Upper Salinas Las Tablas Resource Conservation District (RCD) proposed that the city participate in a grant that could be used to enhance public access to and education about the river; and

WHEREAS, the California Resources Agency has indicated support for a project to emphasize public access to the river, and riparian habitat restoration beginning at Larry Moore Park and ending just north of the Niblick Bridge; and

WHEREAS, the proposed project will join existing or planned portions of a multi-use trail, making an uninterrupted trail (1½ miles) between the southern border of the city and the northern end of the new residential development behind Albertson’s (see attachment 1). It will also include a trailhead parking area across from Larry Moore Park and barriers in the park to discourage off-road vehicles accessing the riverbed from this location; and

WHEREAS, this proposed trail will run parallel to a multi-use, paved trail that is already required to be installed by the developer of Phase III of the Woodland Plaza Center and the SLOCOG multi-use trail design that will extend north of the Veteran’s Bridge; and

WHEREAS, the River Trail will have a focus/emphasis on riparian habitat, historical, and conservation education; and

WHEREAS, the grant would be awarded to the Regional Conservation District in the amount of \$363,000 to accomplish the trail’s construction and the City’s participation cost would be equivalent to environmental permitting costs, on-going trail maintenance costs for a 20-year period, and contribution of staff time/resources to support the effort, and

WHEREAS, the opportunity to participate in this grant will close at the end of January 2005 if not acted upon; and

WHEREAS, the Parks and Recreation Advisory Committee and REC. Inc. have submitted letters of support for the project; and

WHEREAS, concurrently with the River Trail grant the National Park Service (NPS) has renewed funding for a broad visioning process for the Salinas River corridor; and

WHEREAS, NPS proposes to co-host an intensive, 3 day design workshop focusing on publicly owned lands that would result in an illustrative plan that identifies multi-use recreation trails, access options, and conceptual site designs for the Salinas corridor.

THEREFORE BE IT HEREBY RESOLVED by the City Council of the City of El Paso de Robles authorizes the Mayor to send a letter to the Upper Salinas-Las Tablas Resource Conservation District (RCD) indicating the City's willingness to operate and maintain the trail and habitat enhancements outlined in the grant proposal; and

THEREFORE BE IT FURTHER RESOLVED, to a authorize city staff to work with National Park Service staff to co-host a design workshop that will produce a broad overall direction for the Salinas River corridor; and

THEREFORE BE IT FURTHER RESOLVED, to appropriate \$32,500 to: a) accomplish the up-front environmental work towards the trail project (with the understanding that this cost may be off-set in the future by additional grants being pursued for that purposed) and, b) to accomplish the Salinas River corridor workshop with the help of NPS staff; and

THEREFORE BE IT FURTHER RESOLVED, to authorize staff to create a budget for routine annual maintenance at \$16,500 beginning July 1, 2006 and create a replacement fund at \$15,000 per year for total expense of \$31,500 annually; and

THEREFORE BE IT FURTHER RESOLVED, to direct city staff to develop a strategy/proposal for creation of a Salinas River Corridor Plan.

PASSED AND ADOPTED by the City Council of the City of Paso Robles this 21st day of December 2004 by the following vote:

AYES:
NOES:
ABSTAIN:
ABSENT:

Frank R. Mecham, Mayor

ATTEST:

Sharilyn M. Ryan, Deputy City Clerk

City Park

Downtown

High School

Wadsworth

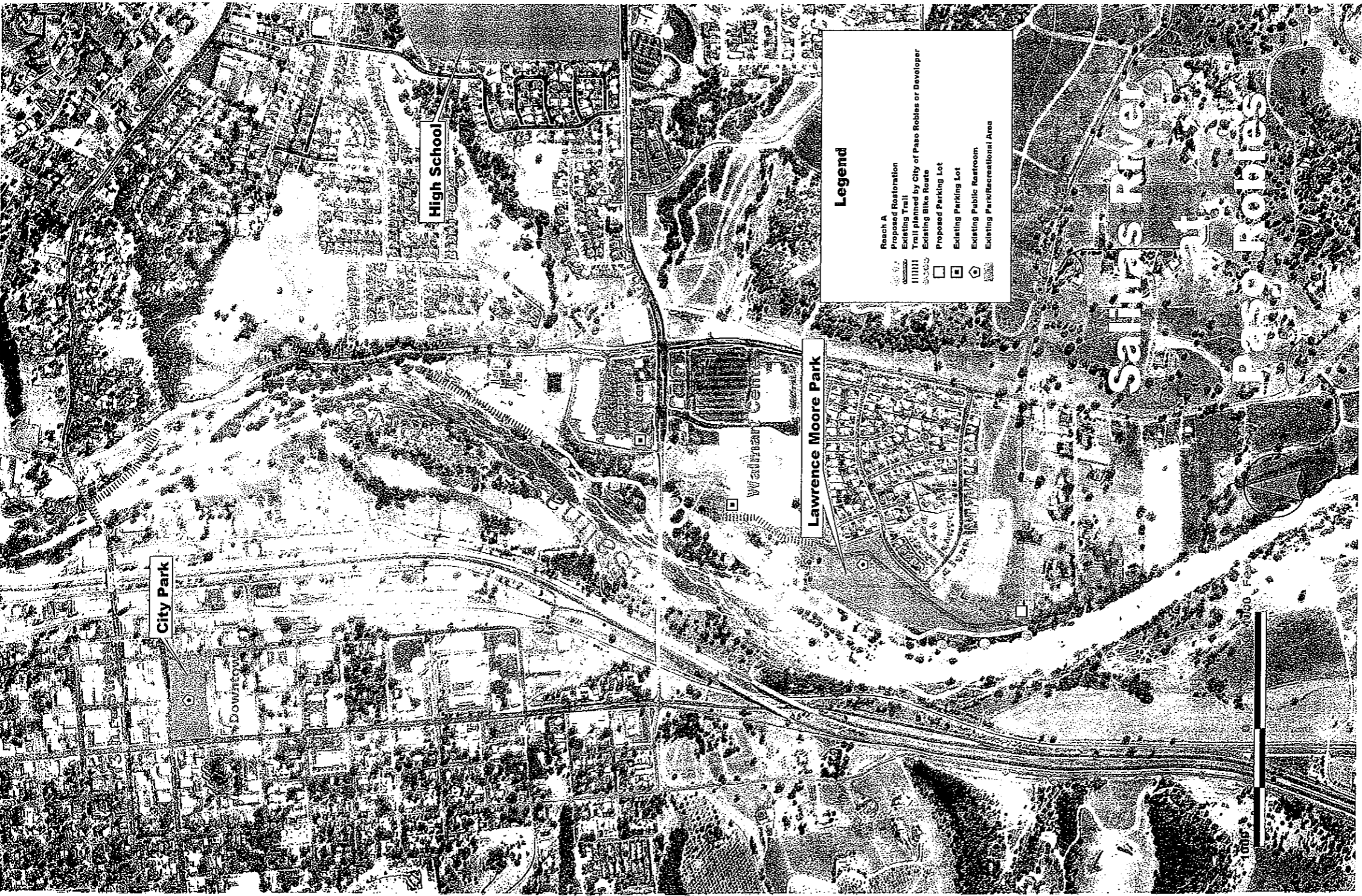
Lawrence Moore Park

Salinas River

Paso Robles

Legend

- Reach A
- Proposed Restoration
- Existing Trail
- Trail planned by City of Paso Robles or Developer
- Existing Bike Route
- Proposed Parking Lot
- Existing Parking Lot
- Existing Public Restroom
- Existing Park/Recreational Area





CITY OF EL PASO DE ROBLES

"The Pass of the Oaks"

LIBRARY & RECREATION SERVICES

September 14, 2004

Donald Funk, Executive Director
Upper Salinas - Las Tablas Resource Conservation District
65 Main Street #108
Templeton, CA 93465

Dear Mr. Funk:

The Paso Robles Parks and Recreation Advisory Committee was pleased to hear about the **Upper Salinas River Corridor Enhancement Project** grant that you submitted on behalf of the City of Paso Robles. We recognize the tremendous potential this program has, and believe it will enhance our community. As an organization that represents open space and recreational opportunities for Paso Robles, we endorse it.

As the project develops, we invite you, your staff, or others involved in the program to keep us abreast of its progress. We would be happy to advise you on community interests in parks and recreation. Our committee meets the second Tuesday of the month at 4:00 p.m.

Thank you for your efforts.

Sincerely Yours,

Robin Fairbairn, Chairman
Paso Robles Parks & Recreation Advisory Committee



2004 Board of Directors
Greg Haas-Chair
Danna Stroud
Kris Penick
Jeff Fenick
Marge Ernst
Erandon Madeiros
Mary Barth
Sheree Davis
Dee Lacey
Vince Vanderlip
Kathleen O'Connor

September 8, 2004

Donald Funk, Executive Director
Upper Salinas – Las Tablas Resource Conservation District
65 Main Street #108
Templeton, CA 93465

Dear Mr. Funk:

Recreation Encourages Community! REC Inc is a non-profit corporation dedicated to creating enhanced programs, places, and open spaces. As such, we take an interest in any project that may affect recreation in Paso Robles.

We have reviewed the Upper Salinas River Corridor Enhancement Project grant. We are delighted that you propose trails designed to provide public access to our wonderful Salinas River habitat. We envision children and adults developing an appreciation of the rich river vegetation and animal life. No amount of television, computer, or other "virtual" experience can match the sensory enrichment and education that is provided by exploring an outdoor environment.

We are pleased to add our name to the collaboration of agencies and organizations supporting this effort.

Sincerely Yours,

A handwritten signature in black ink, appearing to read 'Greg Haas', written in a cursive style.

Greg Haas, Chairman



United States Department of the Interior

NATIONAL PARK SERVICE

Pacific West Region
Pacific Great Basin Support Office
1111 Jackson Street, Suite 700
Oakland, California 94607

IN REPLY REFER TO:

November 24, 2004

City Council Members
City of El Paso de Robles
1000 Spring St
Paso Robles, CA 93446

Esteemed Council:

On behalf of the National Park Service's Rivers, Trails and Conservation Assistance Program (RTCA), I would like to express our enthusiasm for and commitment to the Salinas River Enhancement Project.

It has been over a year since we were last actively engaged with the City in its efforts to initiate a Salinas River planning process. Our work culminated with the "Follow the River: Follow the Dream" public workshop on September 30, 2003. Over 100 interested community members not only participated in the workshop but also overwhelmingly supported the idea of developing of a Salinas River Enhancement Plan. Next steps identified included:

1. City staff to conduct one on one meetings with private property owners along the Salinas River corridor within the City limits.
2. Obtain formal City Council approval for developing a Salinas River Enhancement Plan
3. Solicit and obtain formal agency support for project
4. Pursue scientific mapping for corridor
5. Coordinate a public involvement process that results in a vision, goals and objectives for the Salinas River.

Unfortunately, due to circumstances beyond our control—government fiscal cutbacks for the RTCA program, and the earthquake that hit Paso Robles—we have been at a holding pattern for a year. However it looks like timing may be fortuitous to rekindle our efforts as RTCA looks like it will be funded to provide limited assistance to the City for this upcoming fiscal year. In addition, it is a sign of initiative and excellent partnership efforts that the City may receive a grant from the California Resources Agency to execute trail building along the Salinas River near the Lawrence Moore Park.

We look forward to working together with you and the citizens of Paso Robles to create a vision and conceptual plan for the entire reach of the Salinas River as it travels through your wonderful town. Early discussions with city staff have focused on the idea of conducting a design charrette as a means to involve the community, stakeholders, agency representatives and city staff in coming together to create a viable and appropriate plan for the River corridor. This three day intensive design workshop will ideally take place in the spring of 2005.

Sincerely,

Sally Sheridan

Landscape Architect

National Park Service's Rivers, Trails and Conservation Assistance Program

Revised October 25, 2004

Upper Salinas-Las Tablas Resource Conservation District

**Proposal for a River Parkway Program Grant
Submitted to the California Resources Agency**

UPPER SALINAS RIVER CORRIDOR ENHANCEMENT PROJECT

LOCATION: Upper Salinas River, Northern San Luis Obispo County

PURPOSE OF THE PROJECT

The Salinas River is the largest California coastal watershed south of San Francisco and is the primary watershed draining to the Monterey Bay National Marine Sanctuary. The State Water Resources Control Board lists the Salinas River Watershed, California's largest coastal watershed south of San Francisco, as a Category I Impaired Watershed. The watershed has been impacted by nonpoint source water quality pollution due to soil erosion, excessive chemical usage (such as fertilizers and insecticides), and ecosystem degradation (impacting local steelhead, redlegged frogs, California condors, San Joaquin kit fox and other species). The Salinas River and its tributaries have lost riparian vegetation, causing bank erosion, increased surface water temperatures, and loss of habitat.

The purpose of the *Upper Salinas River Corridor Enhancement Project* (Project) is to restore riparian habitat, reduce erosion, educate people about the history and importance of the river, and provide passive recreational areas along the river corridor and its tributaries.

Primary Project Objectives:

- ⇒ Restore habitat for land and marine species
- ⇒ Protect critical habitat resources
- ⇒ Reduce pollutants such as excessive sediments
- ⇒ Provide trails for public enjoyment
- ⇒ Educate the public about measures that improve environmental conditions

THE UPPER SALINAS-LAS TABLAS RCD

The Upper Salinas-Las Tablas Resource Conservation District (US-LT RCD) has established itself as one of most effective community-based organizations in the Central Coast in restoring riparian habitat, reducing soil erosion and improving water quality. The watersheds within the US-LT RCD comprise approximately 1.5 million acres (2,300 square miles) of the Central Coast, including 1,365,000 acres in San Luis Obispo County (about three-quarters of the county area) and 138,000 acres within Monterey County. The largest landowners within the US-LT RCD boundary are the federal government (Forest Service, Bureau of Land Management and U.S. Army (Camp Roberts)), the Monterey County Water Resources Agency, and the Hearst Corporation (Hearst Ranch and the Jack Ranch). The district jurisdiction also encompasses the fragile Carrizo Plain in southeastern San Luis Obispo County. The

coast of northern San Luis Obispo County and one-half of the 4,000-square-mile Salinas River Watershed is also within the US-LT RCD boundary.

GENERAL PROJECT DESCRIPTION

From the City of Atascadero through the northern boundary of San Miguel, the Upper Salinas River flows approximately twenty-five miles as it journeys north to the Monterey Bay National Marine Sanctuary. During the period from May 2005 through May 2007, approximately ten miles of trails, divided into three reaches, will be developed with interpretive signage designed to reengage the public with the river, its wildlife, and linkages between the Upper and Lower Salinas River Watershed. The trails constructed by the US-LT RCD will connect to existing trails and walkways as well as to trails proposed to be constructed by the Cities, County, and by landowners. The Project in the Upper Salinas River and Atascadero Creek forms the first phase of a larger project plan to create trails and river channel restoration that will extend along the river where feasible and practical.

The Project's restoration design will be guided by the *Upper Salinas River Watershed Action Plan, July 2004 (WAP)*. The WAP was accepted by the State Water Resources Control Board this year. Project management for design and construction will be provided by the Upper Salinas-Las Tablas Resources Conservation District. The Planning and Conservation League Foundation, the US-LT RCD's partner, has been instrumental in rallying the resources within the Cities of Paso Robles and Atascadero and other organizations to support the Project.

Restoration of riparian vegetation and wildlife habitat enhancement will occur in all three reaches of the Project. The vegetation enhancement will use bioengineering and holistic measures to reduce channel erosion and sediment transportation. Noxious and invasive weeds will also be removed. Car bodies, appliances and other trash dumped in the river will be removed.

The trail system will be implemented by the US-LT RCD and California Conservation Corps (CCC).

Components of the Riparian Habitat Enhancement Plan

- US-LT RCD will design and, with the assistance of the CCC, will implement riparian vegetation restoration for all of these segments of the river and establish workable methods to improve habitat and reduce erosion (reducing sediment loads).
- The US-LT RCD will incorporate recommendations of the existing biological reports for the enhancement of the habitat and bank stabilization. This Project will implement urban area restoration.
- Supervise the CCC crew planting of bank riparian vegetation.
- Support development of a *Salinas River Corridor Master Plan* (City of Paso Robles *General Plan* 2003), that incorporates this demonstration action as a model for future riparian restoration work.

- Assist the City of Paso Robles, City of Atascadero, County of San Luis Obispo and town of San Miguel in facilitating meetings and providing technical information about the demonstration action for development of a *Salinas River Master Plan*.
- Continue water quality monitoring and vegetation evaluation activities to assess improvements in sediment loads downstream from the Project.

Components of the Public Access Plan

- US-LT RCD will design the Project and with the assistance of the CCC construct approximately 10 miles of trails along the riparian areas of the river. The railroad grade separation costs are approximate. Other options for trail access between the San Miguel Mission/Rios Caledonia Adobe will be incorporated if we do not obtain approval for a direct pedestrian crossing from the Union Pacific Railroad.
- Design and construct parking areas for visitors.
- Improve existing public restroom for visitors.
- Design and install an interpretive sign program that guides people within the river corridor and provides informative descriptions of native wildlife and riparian vegetation, restoration being conducted, watershed linkages of the Upper and Lower Salinas River and connection to the Monterey Bay National Marine Sanctuary, Native American people's use of the river and wildlife (Salinan Nation), the role the river played in the mission period and exploration of California, and other themes of environmental, cultural and historical significance.
- Provide a pedestrian connection to the historic San Miguel Mission.
- Provide Spanish translation of all trail signage and incorporate the interpretive program.

Project Management and Cooperating Agencies and Organizations

The Upper Salinas-Las Tablas Resources Conservation District is the lead agency for the Project and will provide management of Project activities, grant administration, and coordination with the County, cities and other key participants in the Project. Project goals will be guided by the *WAP* and will also be consistent with the City of Paso Robles goals to develop a *Salinas River Corridor Master Plan* that will address "recreation, conservation, use, public access, and educational outreach" related to the urban river corridor (*General Plan*, December 2003). The plans are also consistent with the County's trail system as well as the creek plans for Atascadero. Other sections of the trail are projected to be implemented in future years.

This Project is a collaboration of a number of agencies, organizations and individuals:

- Upper Salinas-Las Tablas RCD
- City of Paso Robles
- City of Atascadero
- County of San Luis Obispo
- Planning and Conservation League Foundation
- California Conservation Corps
- State Department of Fish and Game
- State Water Resources Control Board
- San Miguel Resource Connection
- Atascadero Land Preservation Society
- Central Coast Regional Water Quality Control Board
- USDA Natural Resources Conservation Service
- San Miguel Advisory Committee
- San Miguel Joint Union School District
- Monterey Bay National Marine Sanctuary
- Landowners
- Atascadero Historical Society

Reach A – Paso Robles Area

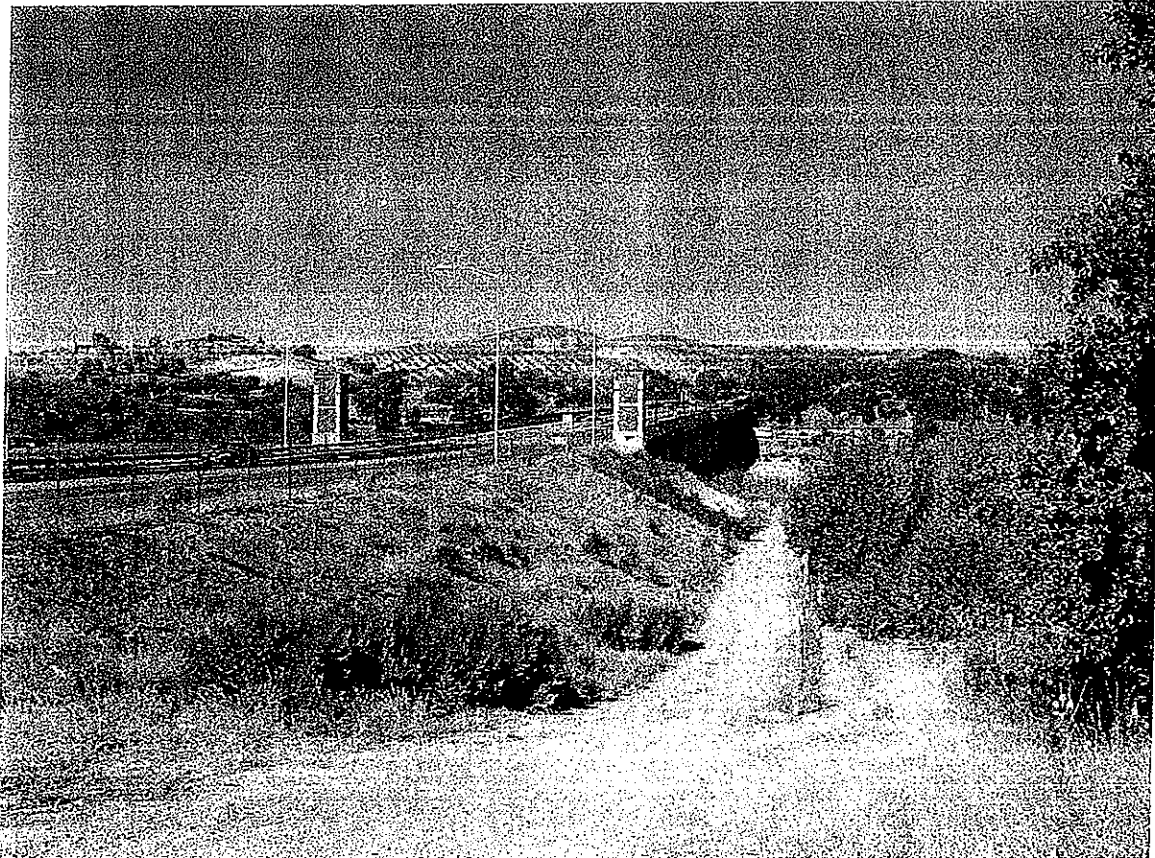
Reach A, Salinas River, City of Paso Robles near Niblick Road Bridge

The Project in Paso Robles forms Phase I of a larger Salinas River Corridor Master Plan to create passive recreational areas that will extend along the river from the 13th Street Bridge at the north end, to the southern boundary of the City. The Phase I Project area will be composed of a reach of the river corridor located at the southern extent of the larger project design. The trail is a part of the route taken by Juan Bautista de Anza and his party of over 200 settlers and 1,000 cattle from the Sonoran Desert (now part of Arizona) to San Francisco. According to the National Parks Service, de Anza's expedition in 1775-1776 led to the founding of the Presidio in San Francisco and the settlement of central and northern California. (Summary from the NPS National Historic Juan Bautista de Anza Trail website) The trail also follows paths used by the Spanish Missionaries during the 1700's and 1800's and by the Salinan Indians for over 10,000 years before the appearance of Europeans.

The Project in Paso Robles will begin just north of Niblick Bridge and extend south to Lawrence (Larry) Moore Park. Access to the trails will be from the Wal-Mart shopping complex, Larry Moore Park, Niblick Road Bridge and the new development north of Albertson's on the east side of the river at Niblick Bridge. The southern portion of Reach A will incorporate 1.5 miles of trail and boardwalk through riparian areas along the east side of the river. Design and installation of an unobtrusive barrier fence placed in strategic areas will help to block popular illegal access points for off-road vehicles to the river channel. Vehicles have caused damage to riparian vegetation within the channel.



The proposed river trail will connect to the existing walkways in Larry Moore Park



The proposed trail will be constructed under the Niblick Road Bridge

Salinas River- City of El Paso de Robles Reach A

Proposed Length of Trail:	1.5 miles
Total Trail Length, Including Existing & Proposed	3 miles
Bilingual Interpretive Signage Proposed:	Yes
Benches and Other Seating Proposed:	Yes
Protective Fencing and/or Bollards Proposed:	Yes
Area of Riparian Restoration:	10 ac.
Noxious Weed Removal:	Yes
Restroom:	Existing at Larry Moore Park
Parking:	Existing
Part of National, County or City Trails Plans:	Yes
Connection to Existing Trails:	Yes
Future Potential Connection to Other Trails:	Yes
Land Purchase or Easement Purchase Needed:	No

Salinas River Trail and Habitat Restoration Project

10/25/2004

Upper Salinas-Las Tablas RCD, California Conservation Corps, and Planning and Conservation League Foundation

Reach A, Salinas River, City of Paso Robles

DESIGN, ADMINISTRATION, MONITORING, & PERMITS

	Materials & Other	Hours	Rate	Total hour cost	Total
Design, Coord. w/ agencies & Sign Design/Spanish translation	\$1,000.00	640	\$40.00	\$25,600.00	\$26,600.00
Drafting and Rendering	\$500.00	120	\$32.00	\$3,840.00	\$4,340.00
Site Background Evaluation		160	\$40.00	\$6,400.00	\$6,400.00
Topo Survey and Legal Engineering	\$20,000.00	40	\$40.00	\$1,600.00	\$21,600.00
CCC Design Collaboration	Match	140	\$90.00	\$12,600.00	\$12,600.00
Planning & Cons. League Found.	Match	280	\$45.00	\$12,600.00	\$0.00
Permits and Review		156	\$45.00	\$7,020.00	\$0.00
DFG	\$2,000.00			\$0.00	\$2,000.00
City processing	\$4,000.00			\$0.00	\$4,000.00
TOTAL	\$27,500.00			\$57,060.00	\$77,540.00

Reach A, Lawrence Moore Park-Wal-Mart-Niblick Rd.-Albertsons

3 miles of trails, bridges and boardwalk (incl. 1.5 miles of existing and proposed trails by others)

6,000 ft. of channel bank, 10 ac. of restoration

CONSTRUCTION

	Materials & Other	Hours	Rate	Total hour cost	Total
US-LT RCD					
Construction manage	\$2,000.00	480	\$40.00	\$19,200.00	\$21,200.00
Construction manage eng.		40	\$90.00	\$3,600.00	\$3,600.00
Project Construction	\$1,500.00	960	\$35.00	\$33,600.00	\$35,100.00
Monitoring (During)		240	\$40.00	\$9,600.00	\$9,600.00
Arch. Monitor (During)	\$7,000.00	40	\$40.00	\$1,600.00	\$8,600.00
Monitoring (After)	\$500.00	400	\$40.00	\$16,000.00	\$16,500.00
CCC					
Trails	\$20,000.00	1600	\$13.00	\$20,800.00	\$40,800.00
Parking	\$5,000.00	200	\$13.00	\$2,600.00	\$7,600.00
Signs	\$15,000.00	200	\$13.00	\$2,600.00	\$17,600.00
Benches and Picnic Facil.	\$7,000.00	400	\$13.00	\$5,200.00	\$12,200.00
Bollards and fencing	\$8,000.00	800	\$13.00	\$10,400.00	\$18,400.00
Ped Bridges & Bdwalks	\$30,000.00	2000	\$13.00	\$26,000.00	\$56,000.00
Planting restoration	\$6,000.00	800	\$13.00	\$10,400.00	\$16,400.00
Temporary irrigation	\$4,000.00	240	\$13.00	\$3,120.00	\$7,120.00
Debris & noxious weed removal		120	\$13.00	\$1,560.00	\$1,560.00
Admin. Assistance to RCD	Match	720	\$45.00	\$32,400.00	\$0.00
Bathrooms	\$0.00	0	\$40.00	\$0.00	\$0.00
Grading	\$5,000.00	0	\$40.00	\$0.00	\$5,000.00
Water & Sewer extend	\$0.00			\$0.00	\$0.00
Concrete	\$4,000.00			\$0.00	\$4,000.00
Other	\$5,000.00			\$0.00	\$5,000.00
TOTAL	\$120,000.00			\$166,280.00	\$286,280.00

TOTAL ESTIMATED COSTS, PASO ROBLES REACH:

\$363,820.00