

TO: JAMES L. APP, CITY MANAGER
FROM: ROBERT A. LATA, COMMUNITY DEVELOPMENT DIRECTOR
SUBJECT: CHOOSE FINAL EXTERIOR ARCHITECTURAL SCHEME FOR FIRE STATION NO. 2 REMODEL / REHABILITATION
DATE: NOVEMBER 16, 2004

Needs: For the City Council to choose the final exterior architectural scheme for the rehabilitation/remodel of Fire Station No. 2, located at 235 Santa Fe Road.

- Facts:
1. The following is a chronology of events regarding the rehabilitation of Fire Station No. 2:
 - a. September 2003: Council allocates \$300,000 to address housing and office needs at Sherwood Fire Station (referred to as station No. 2);
 - b. October 2003: cost estimates regarding addition of modular building(s) verses rehabilitation/addition to the existing building are provided to City Council. It is determined that the rehabilitation/remodel of the existing building has the most potential;
 - c. February 2004: an RFQ for architectural services is completed;
 - d. July 2004: proposals from qualified Architects are received;
 - e. September 2004: a contract is signed with Vitetta Architecture for design of the rehabilitation/addition;
 - f. November 2004: elevations are submitted for consideration by DRC.
 2. Rob Nash of Vitetta Architecture presents four (4) different exterior elevation alternatives for the building. After reviewing the alternatives, the DRC recommended that the Council approve Alternative No. 2.

Analysis
And

Conclusions: Once the final alternative for the exterior elevations of the building is approved, the Architect can finalize the construction drawings and submit for a Building Permit.

Policy

Reference: Paso Robles Zoning Ordinance

Fiscal

Impact: None

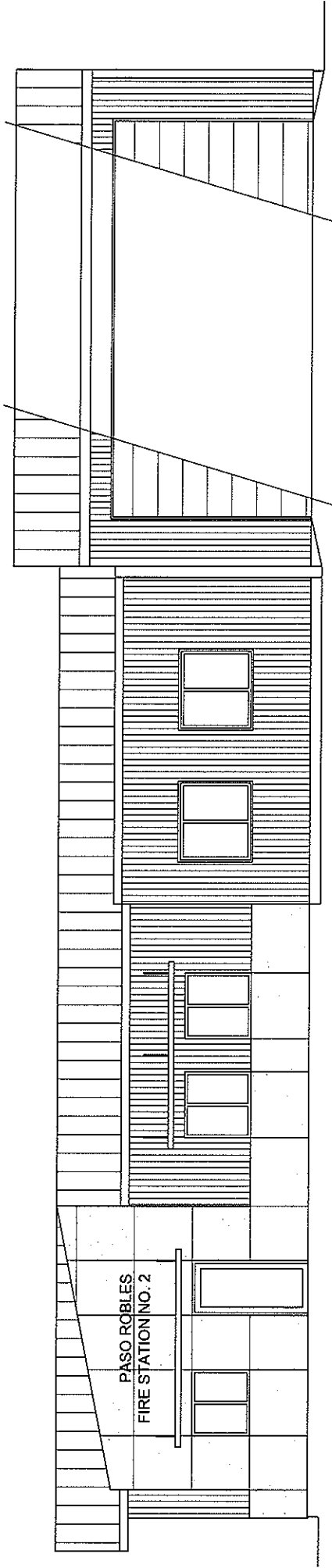
Options: After considering the information and analysis presented and the public testimony received, the City Council will be asked to select one of the following options:

- a.** Adopt Alternative No. 2 as the final architectural design for the exterior elevations for the Fire Station No. 2 rehabilitation/remodel.
- b.** Adopt an Alternative other than Alternative No. 2.
- c.** Request the Architect to supply additional elevation schemes and bring them back to the City Council for further review.
- d.** Amend, modify, or reject the above options.

Attachments:

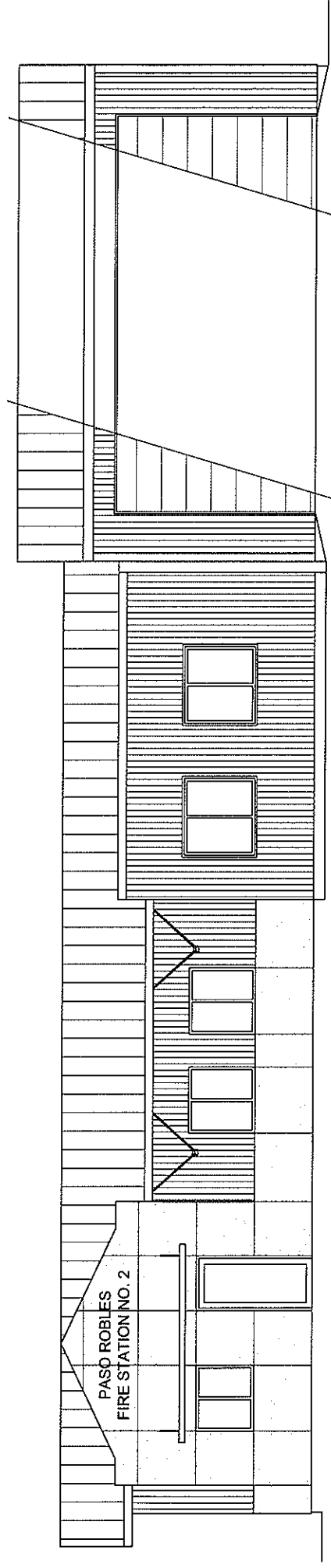
- 1. Alternative No. 1 & No. 2
- 2. Alternative No. 3 & No. 4
- 3. Floor Plan

H:\Darren\CCreports\FireStationNo.2\Report



ALTERNATE NO. 1
SOUTH ELEVATION
NOT TO SCALE

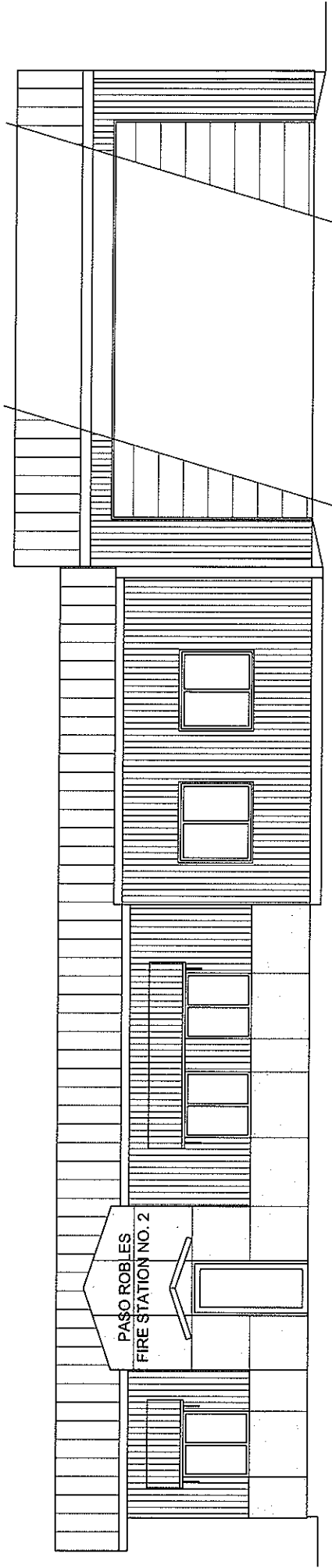
C3



ALTERNATE NO. 2
SOUTH ELEVATION
NOT TO SCALE

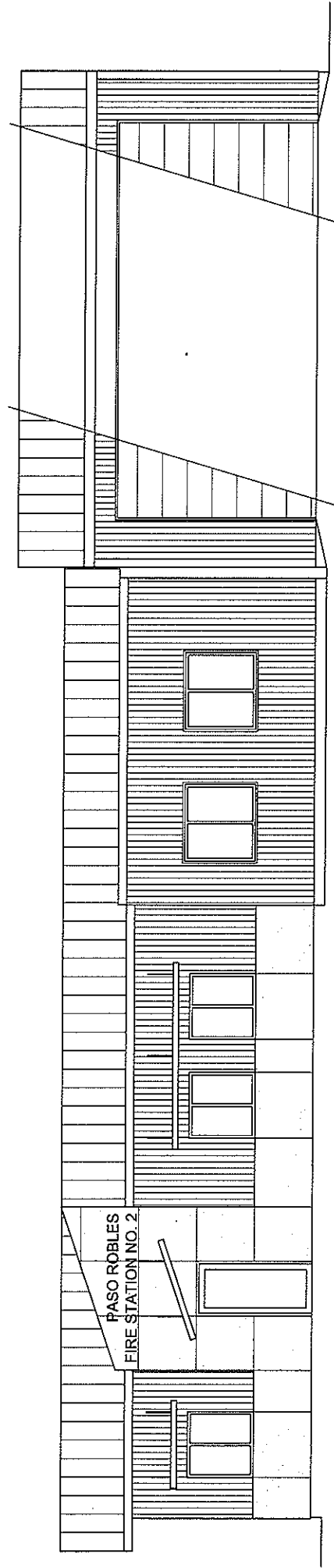
C3

ATTACHMENT 1
Alternative No. 1 & No. 2
(Fire Station No. 2 Remodel)



ALTERNATE NO. 3
SOUTH ELEVATION
NOT TO SCALE

C3



ALTERNATE NO. 4
SOUTH ELEVATION
NOT TO SCALE

C3

ATTACHMENT 2
Alternative No. 3 & No. 4
(Fire Station No. 2 Remodel)

